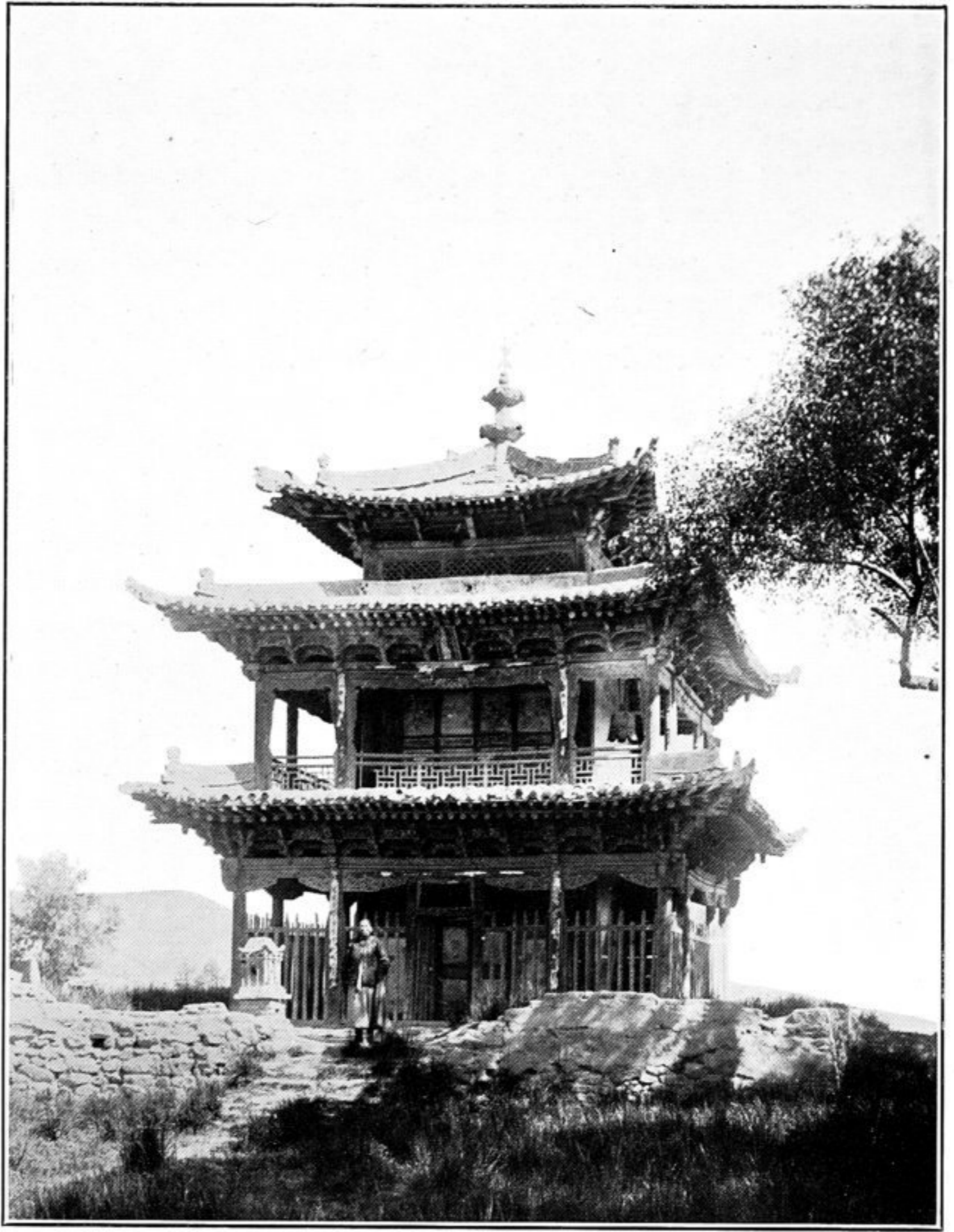
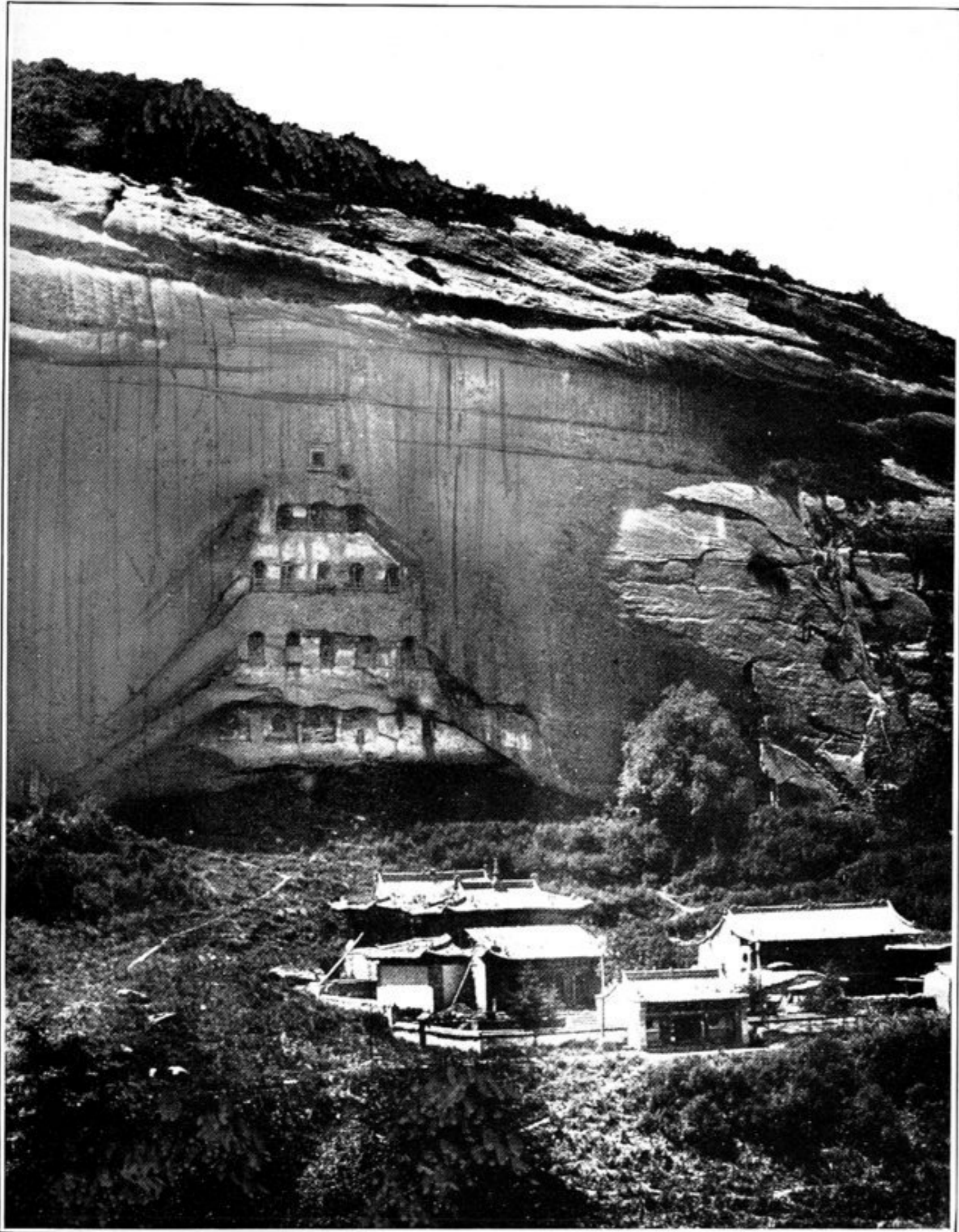


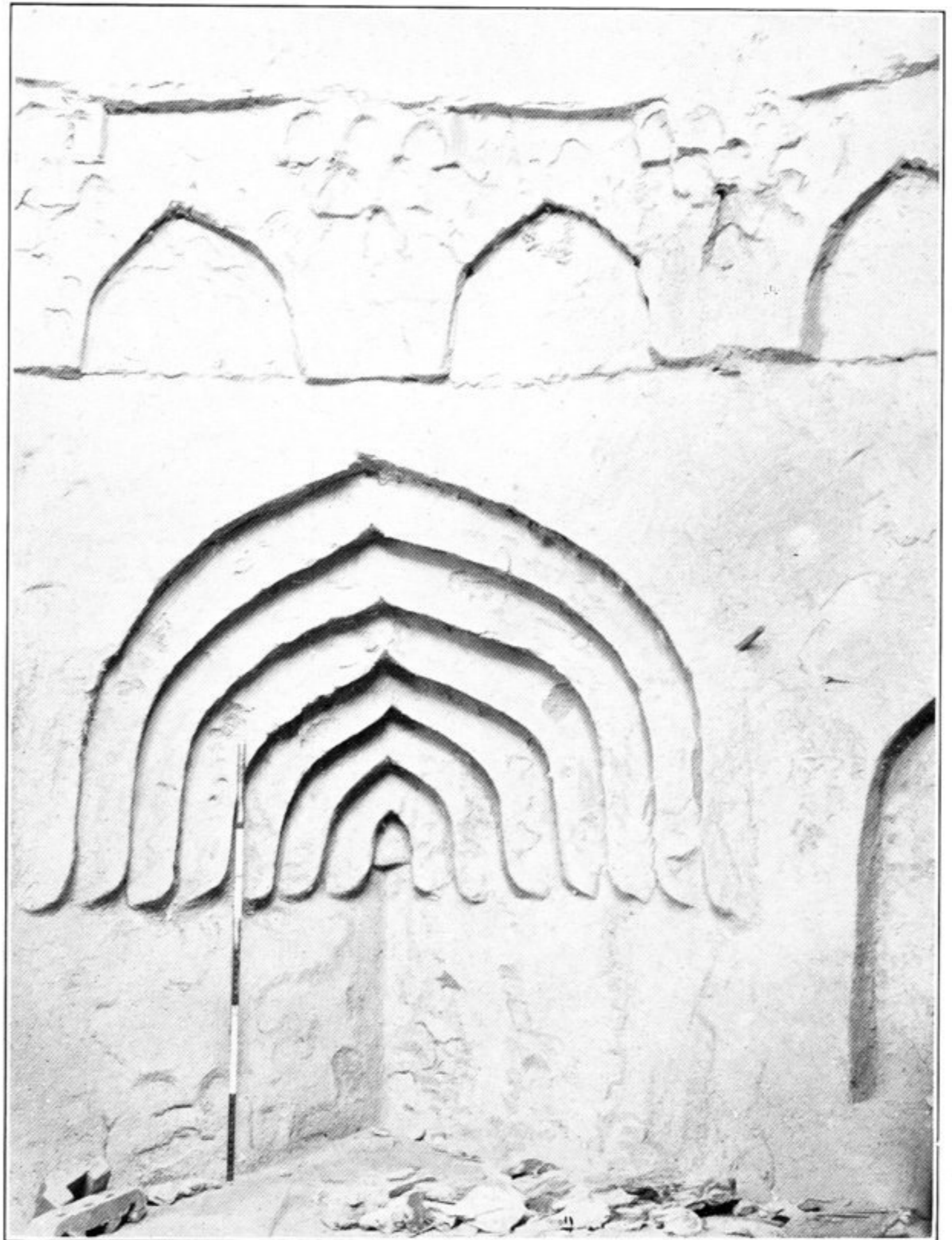
269. TEMPLE BELOW CAVE-SHRINES OF MA-TI-SSŪ MONASTERY.



270. TEMPLE OUTSIDE NAN-KOU-CH'ÉNG.



271. CAVE-SHRINES AND TEMPLE AT MA-TI-SSŪ.



272. CORNER OF INTERIOR OF DOMED MUHAMMADAN TOMB, K.K. VI, KHARA-KHOTO.