

277. KAN-CHOU RIVER DEFILE SEEN FROM CHÈNG-I.



278. FORT OF O-PO, NAN-SHAN, SEEN FROM WEST.



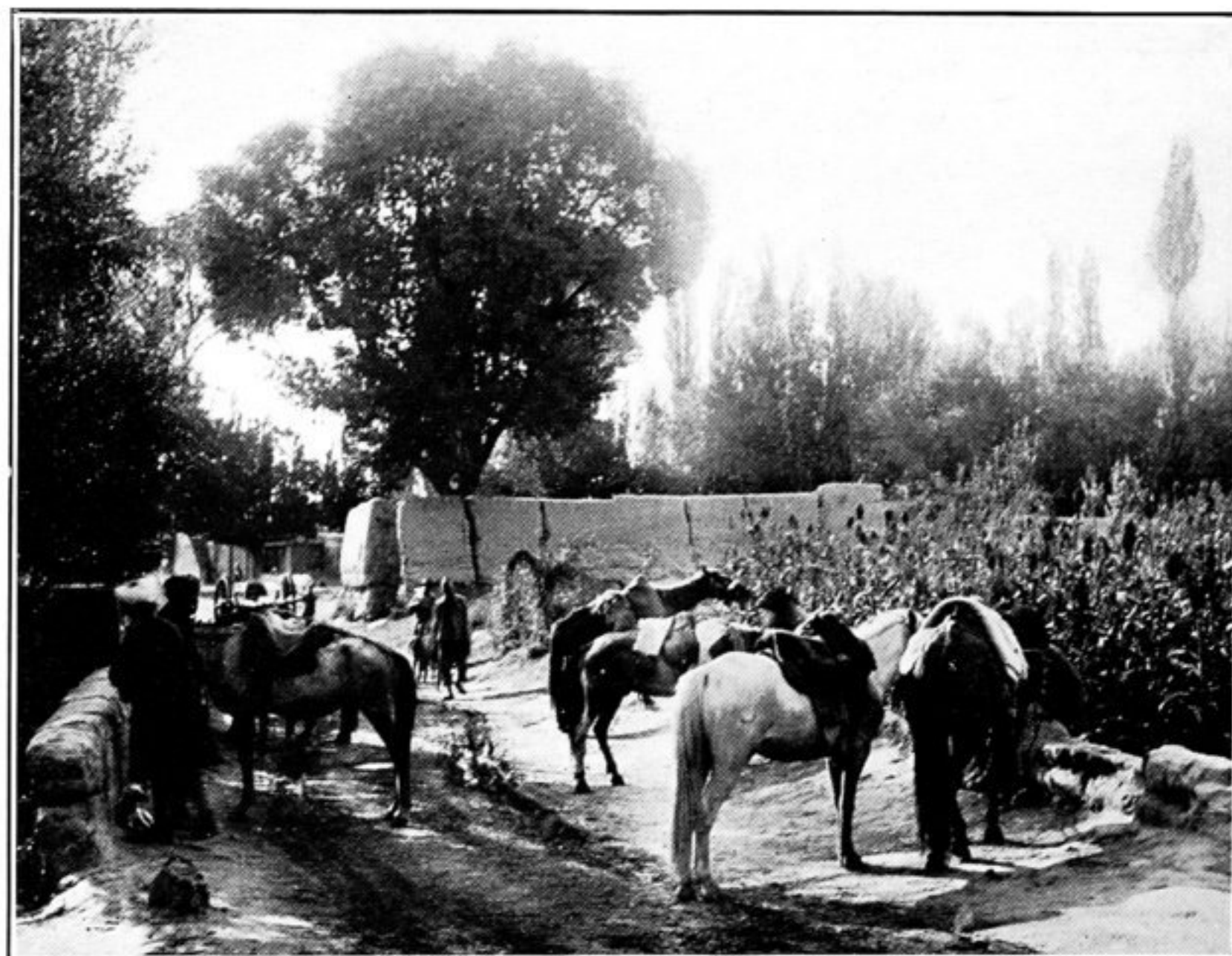
279. VIEW DOWN VALLEY LEADING TO O-PO-LING-TZŪ PASS.



280. MEADOWS AT MOUTH OF VALLEY LEADING TO PIEN-TUNG-K'OU.



281. WEST GATE OF SAN-PA VILLAGE, ON KAN-CHOU RIVER



282. ON THE ROAD TOWARDS SSŪ-PA VILLAGE, ON KAN-CHOU RIVER.