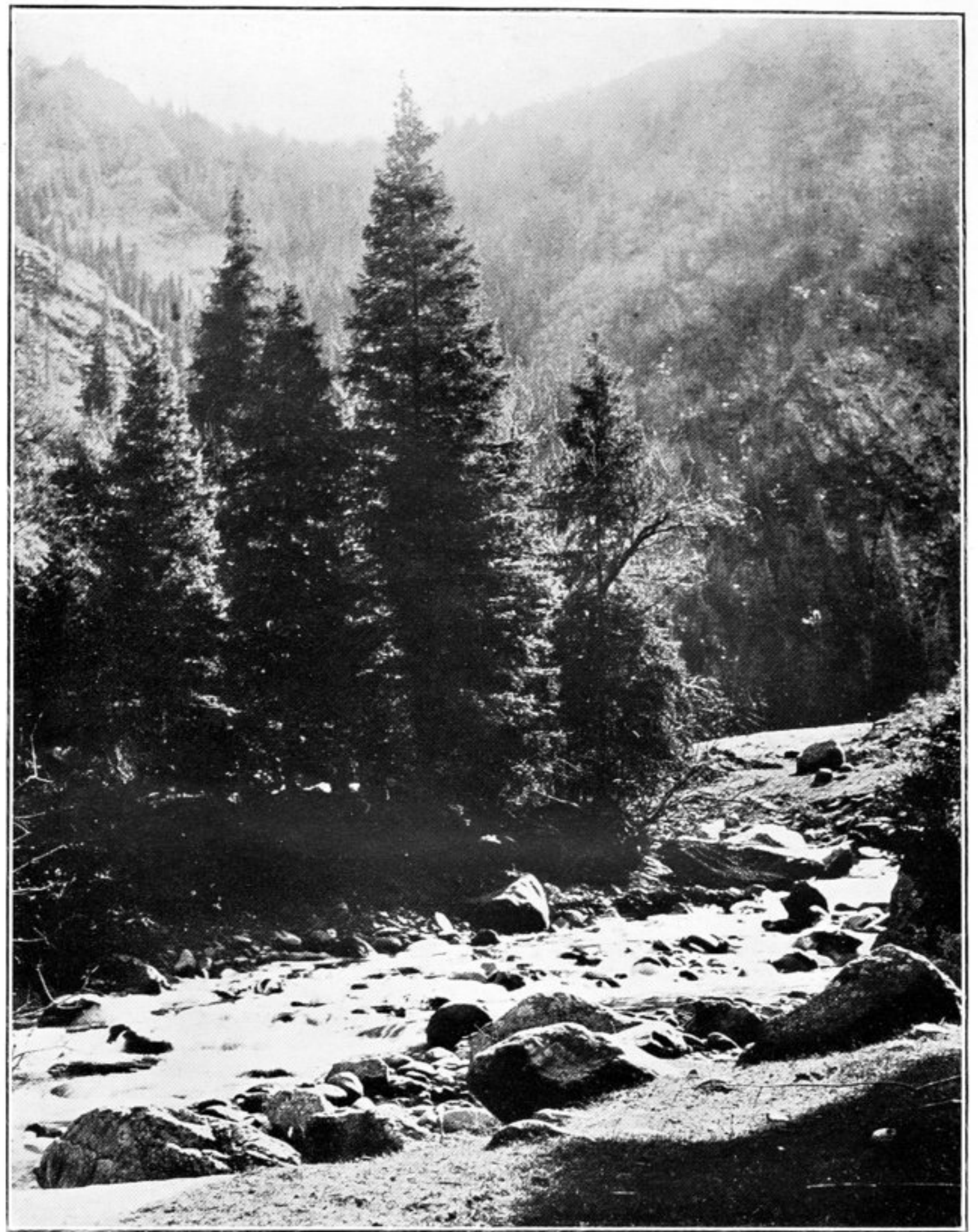
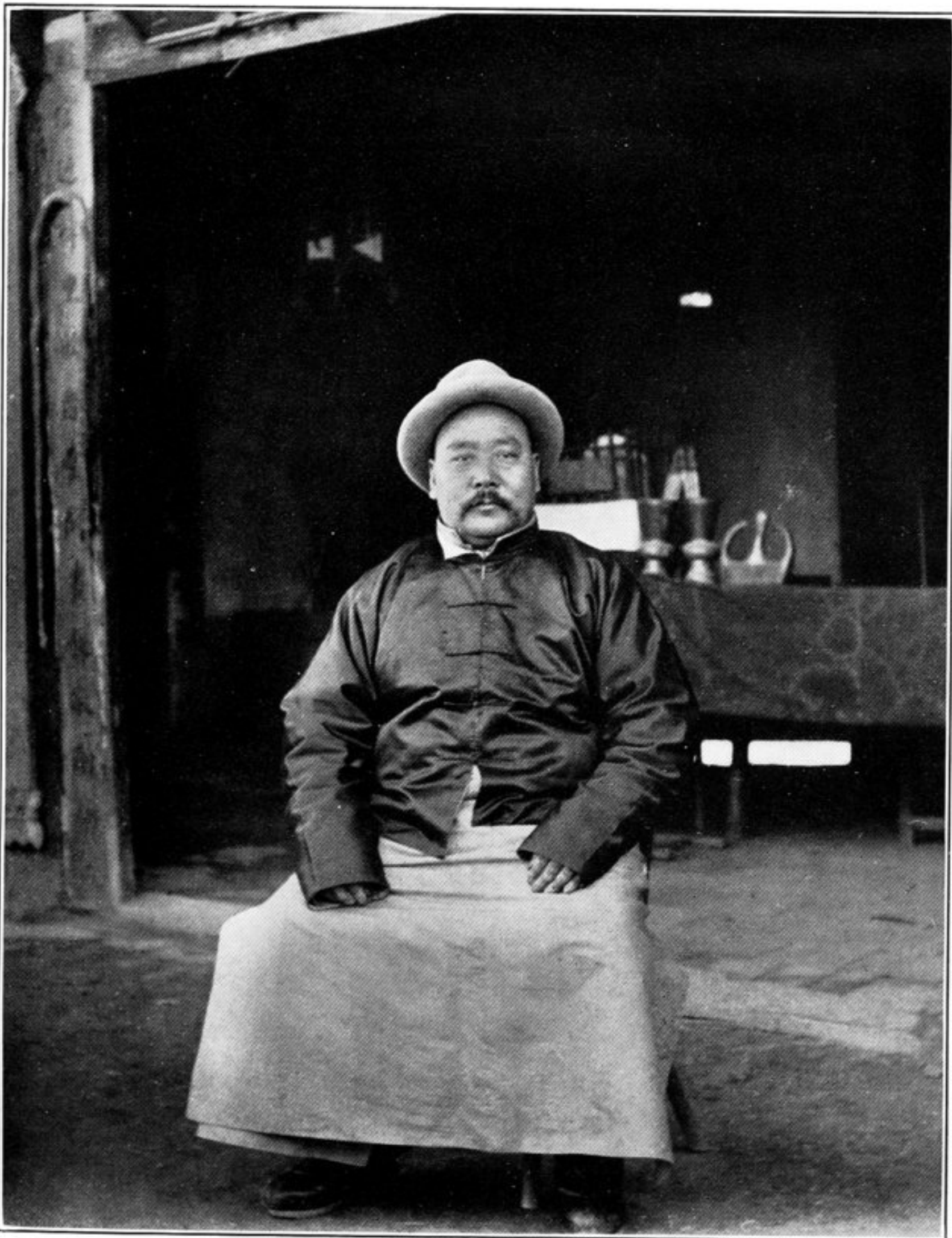


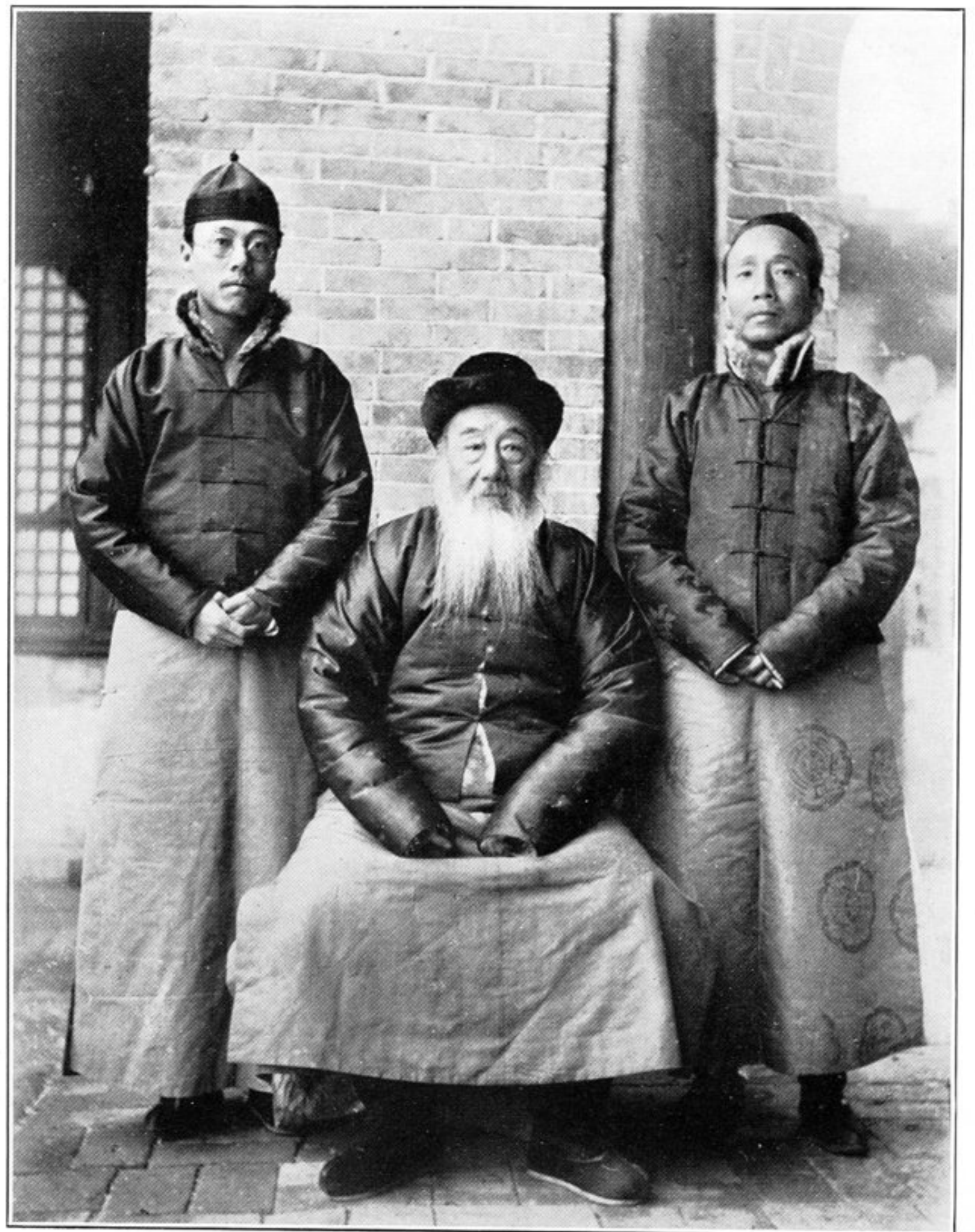
295. GORGE IN ÜMÜR-TÄGH, EASTERNMOST T' IEN-SHAN, ABOVE BAI.



296. ASCENT IN PA-NO-P'A VALLEY ABOVE LO-T'O-P'U-TZÜ, T' IEN-SHAN.



297. MR. LI SHU-JUNG, DISTRICT MAGISTRATE OF BARKUL.



298. P'AN TA-JËN WITH HIS TWO SONS, AT URUMCHI.