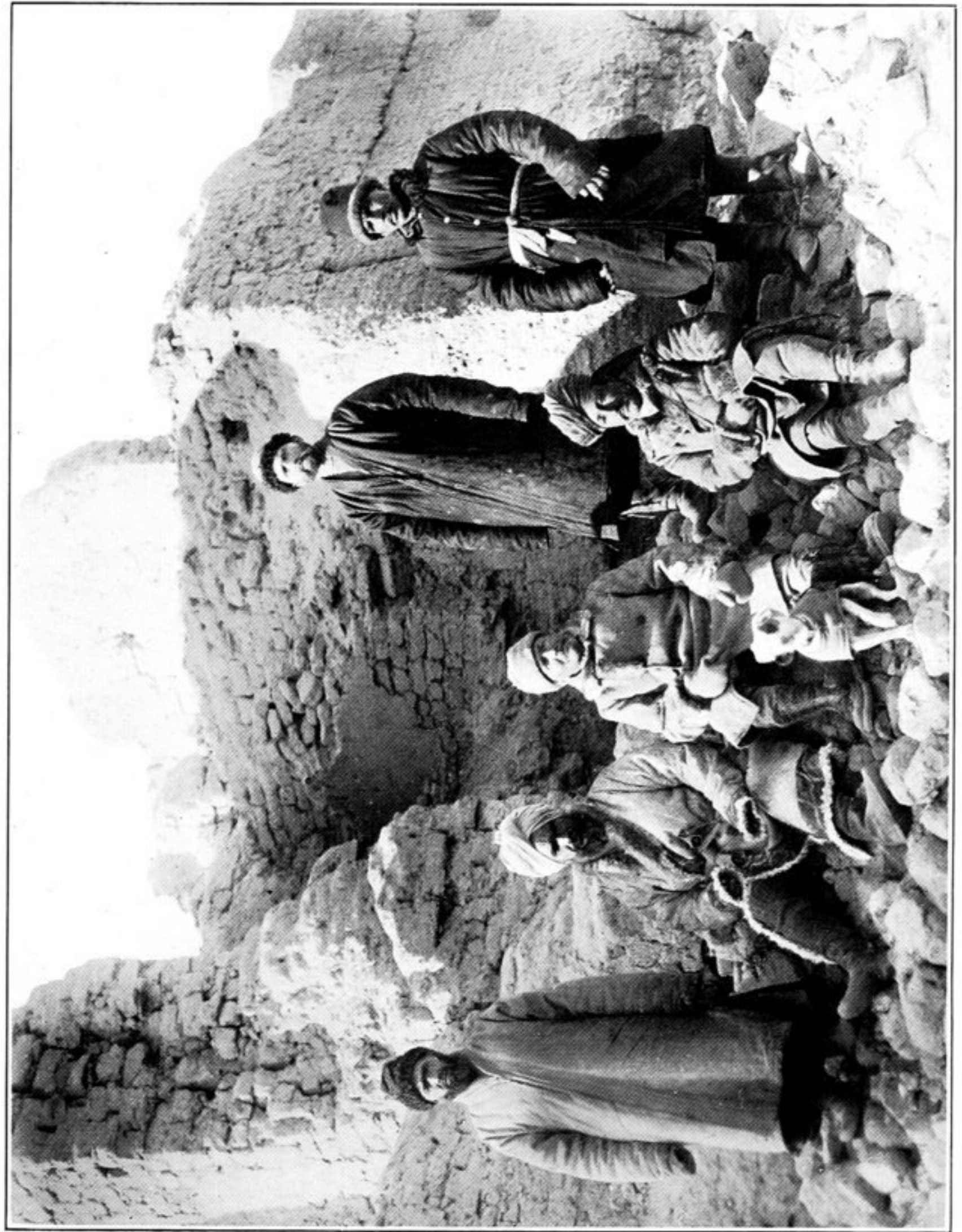
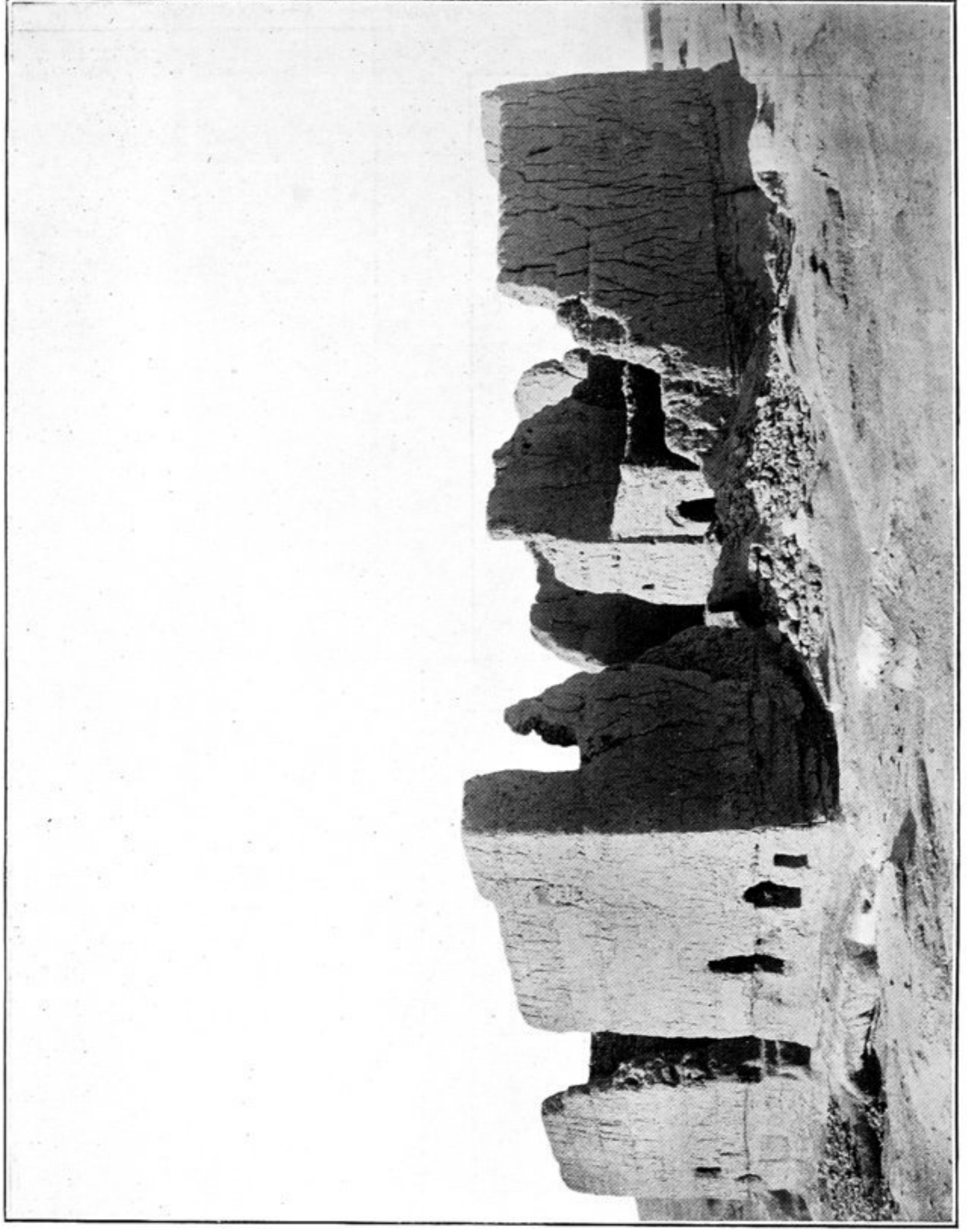


331. RUIN OF LARGE BUDDHIST SANCTUARY, YÄR. II, YÄR-KHOTO, SEEN FROM SOUTH.



332. GROUP OF MY PARTY AT IDIKUT-SHAHRI, TURFÄN.
From left to right : Ibrähim Bäg ; R. B. Lal Singh ; self with 'Dash III' ; Müsa Akhün ;
Afráz-gul Khän ; Jasvant Singh. Ruin of 'Khittai-madrasah' in background.



333. RUIN OF BUDDHIST VIHÄRA YÄR. I YÄR-KHOTO SEEN FROM SOUTH-EAST.