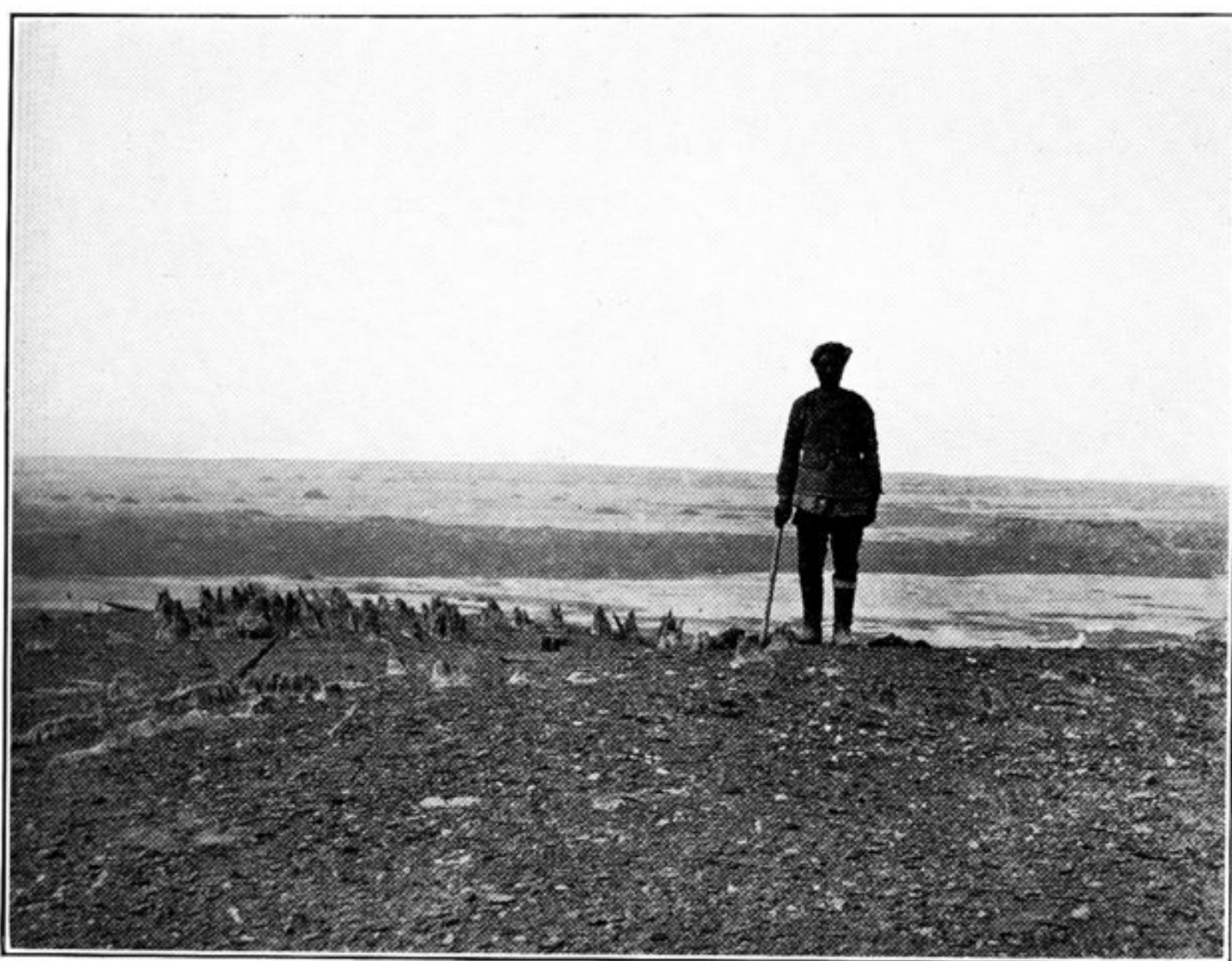


334. SPRING OF SINGER, COVERED BY ICE-SHEET.
Kizil-tāgh in background.



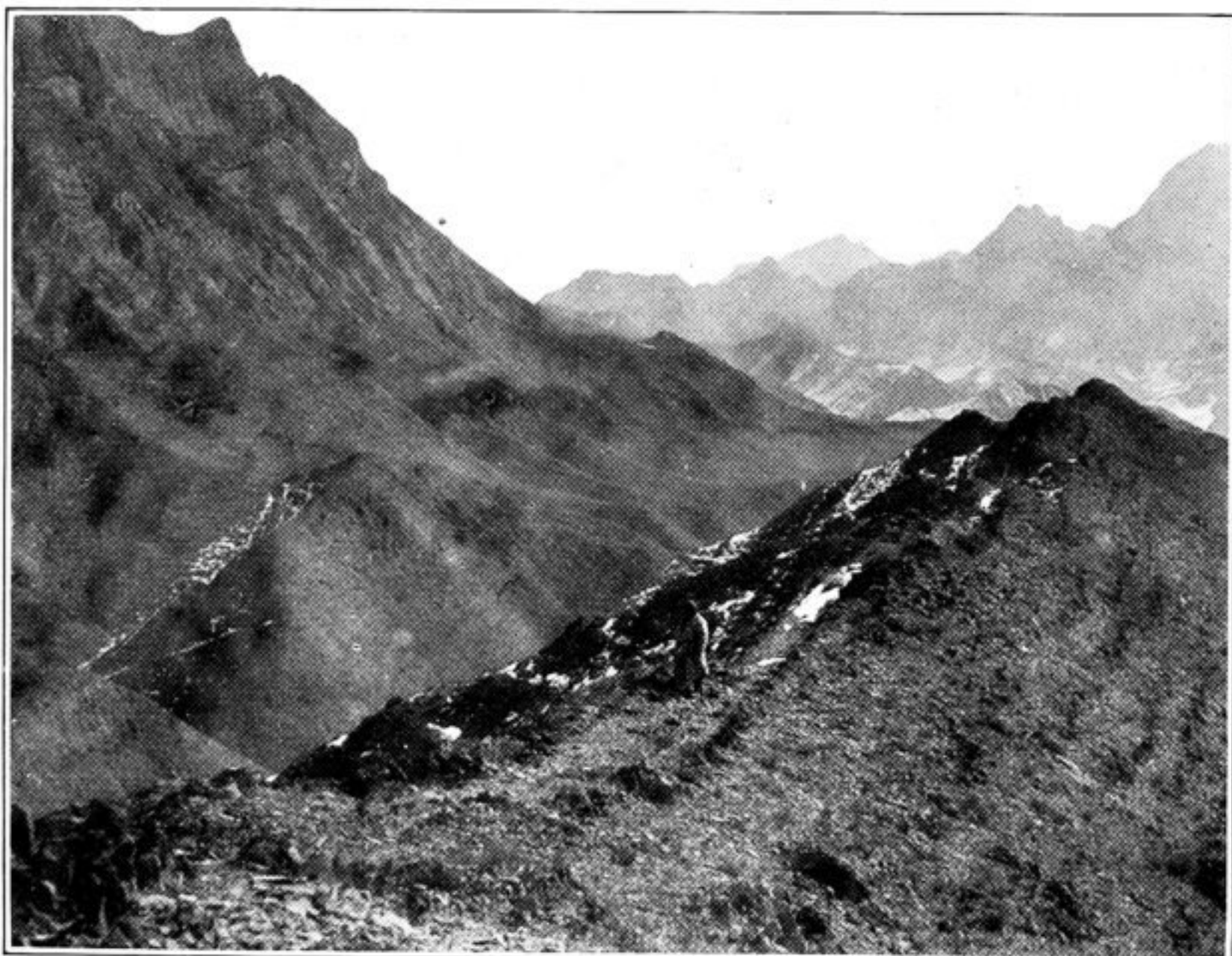
335. MAZE OF SHORT YĀRDANGS NEAR KURUK-DARYĀ, SOUTH OF
YĀRDANG-BULAK.



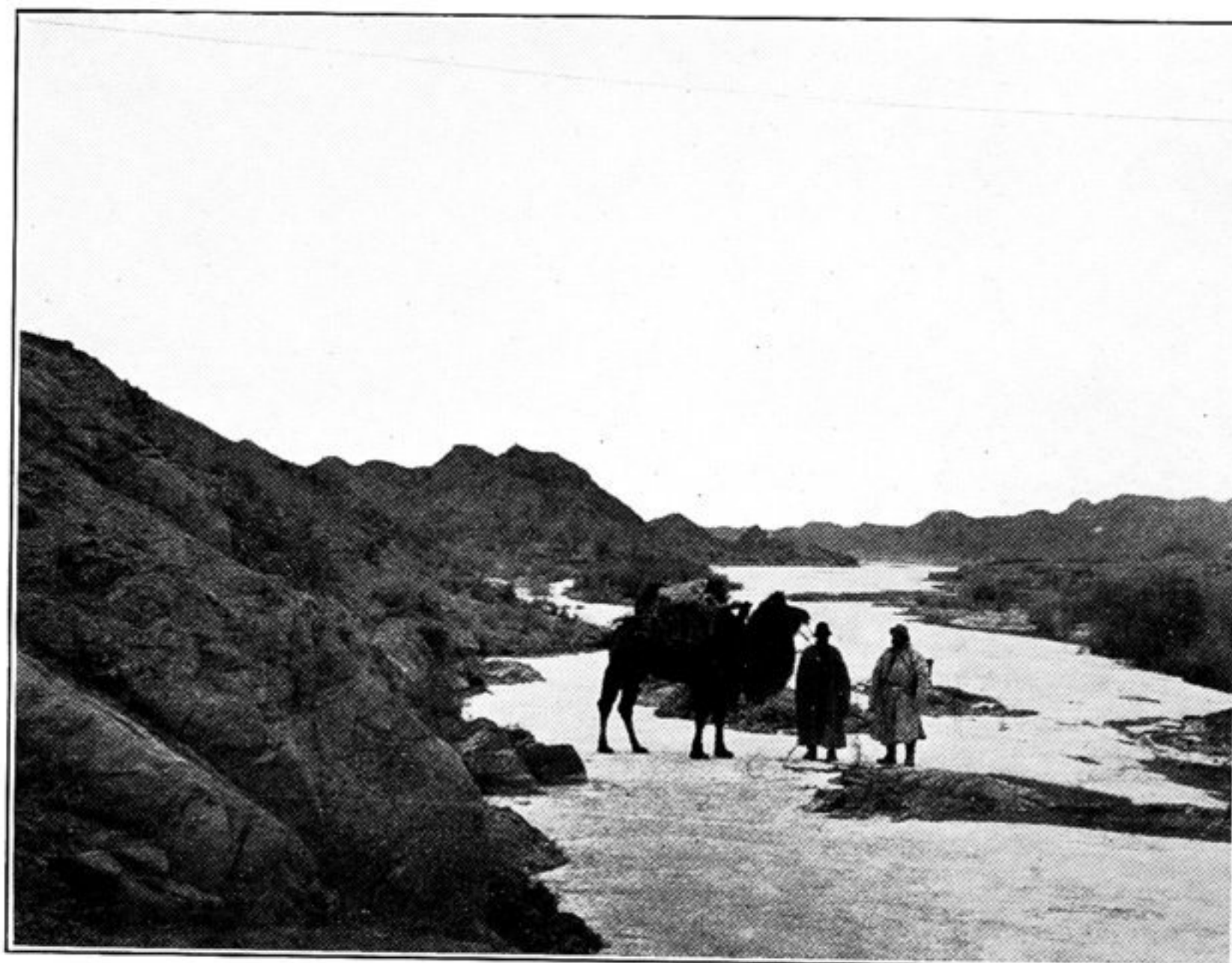
336. BURIAL GROUND, L.S., ON KURUK-DARYĀ.
Rows of eroded small posts mark position of graves.



337. TAMARISK-CONES AND DEAD JUNGLE ON KURUK-DARYĀ BED,
SOUTH OF YĀRDANG-BULAK.



338. VIEW TO SOUTH FROM ABOVE BĚSH-KARA-CHOKA PASS, KURUK-TĀGH.



339. ICE-SHEET COVERING STREAM NEAR TOGHRĀK-BULAK, KURUK-TĀGH.