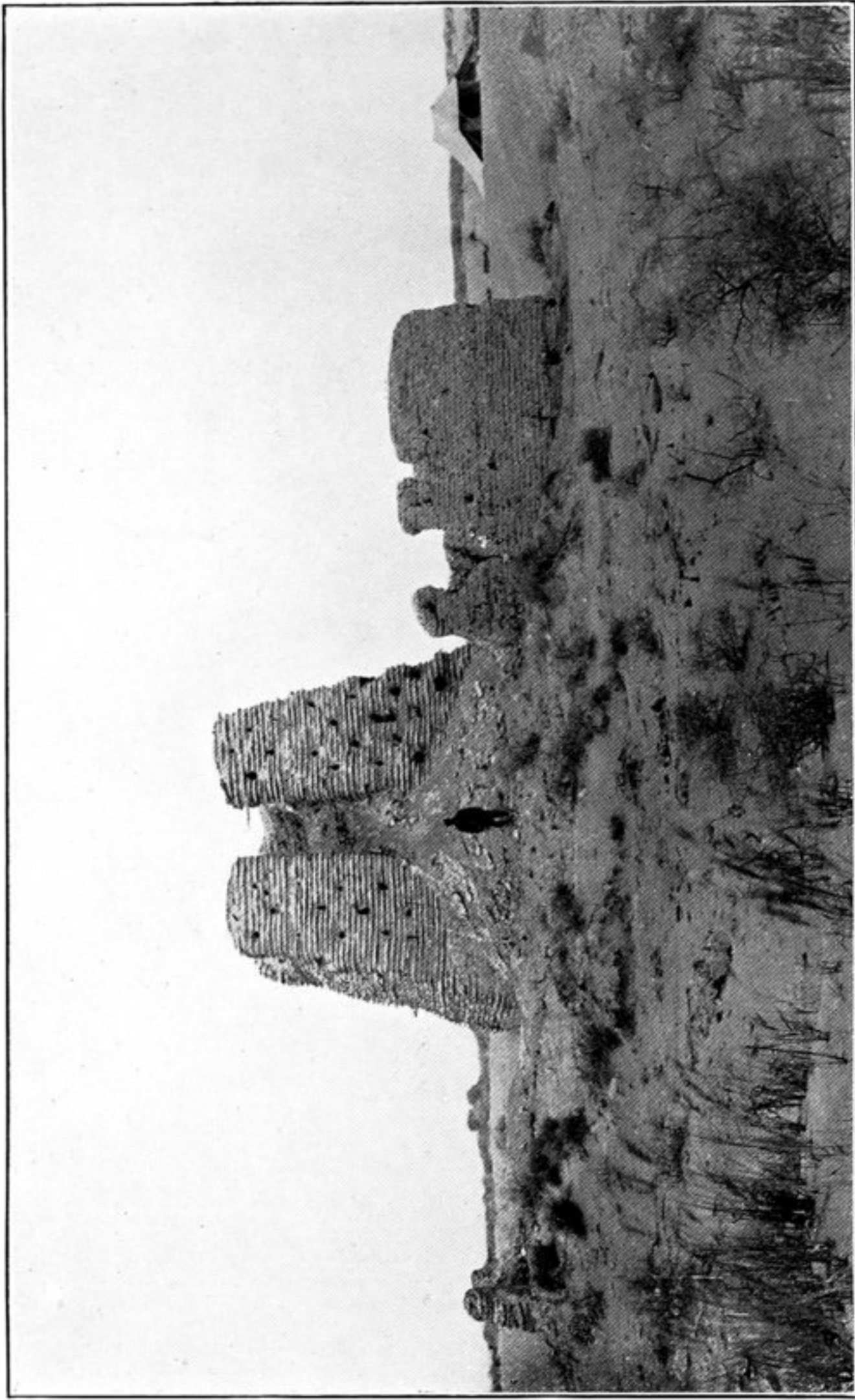
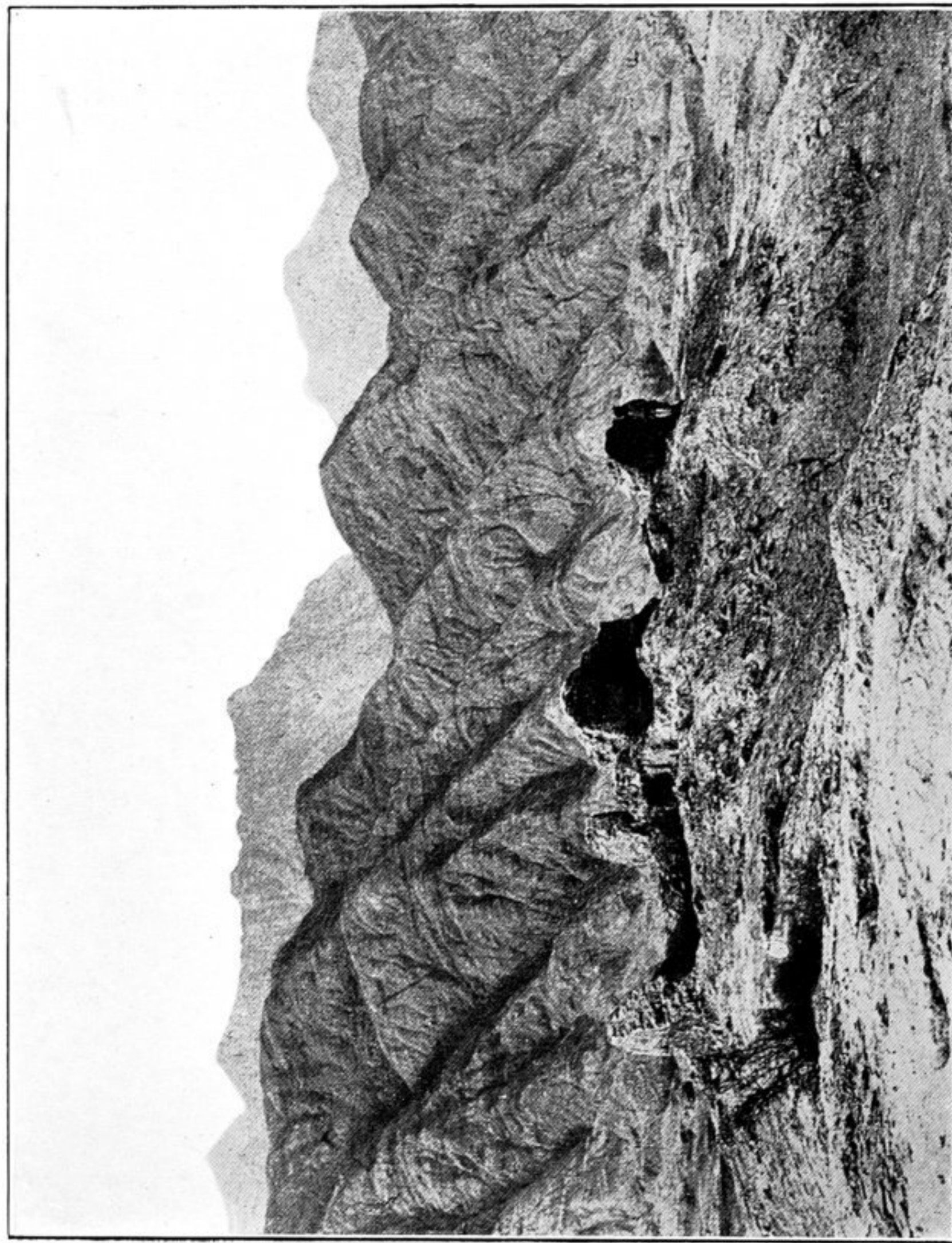


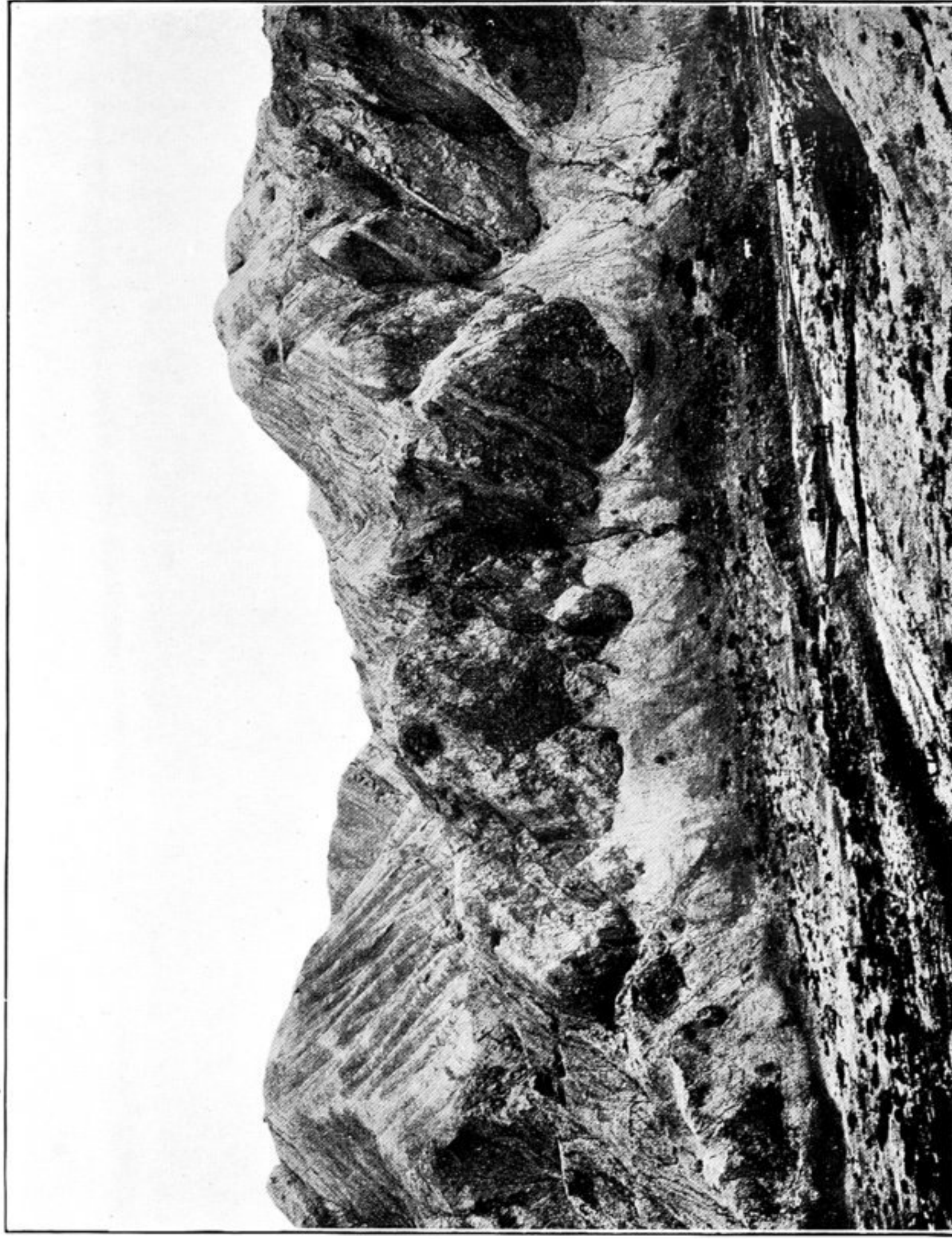
351. RUIN OF WATCH-STATION, Y. I ('KURGHAN'), ON ROUTE FROM YING-P'AN TO KORLA,  
SEEN FROM NORTH-EAST.



352. TOWER AND ENCLOSURE OF ANCIENT WATCH-STATION, Y. I ('KURGHAN'), SEEN  
FROM SOUTH.



353. REMAINS OF RUINED QUADRANGLE, TAJIK.



354. SITE OF JIGDALIK, LOOKING WEST.  
Arrow marks position of small cave-shrines.