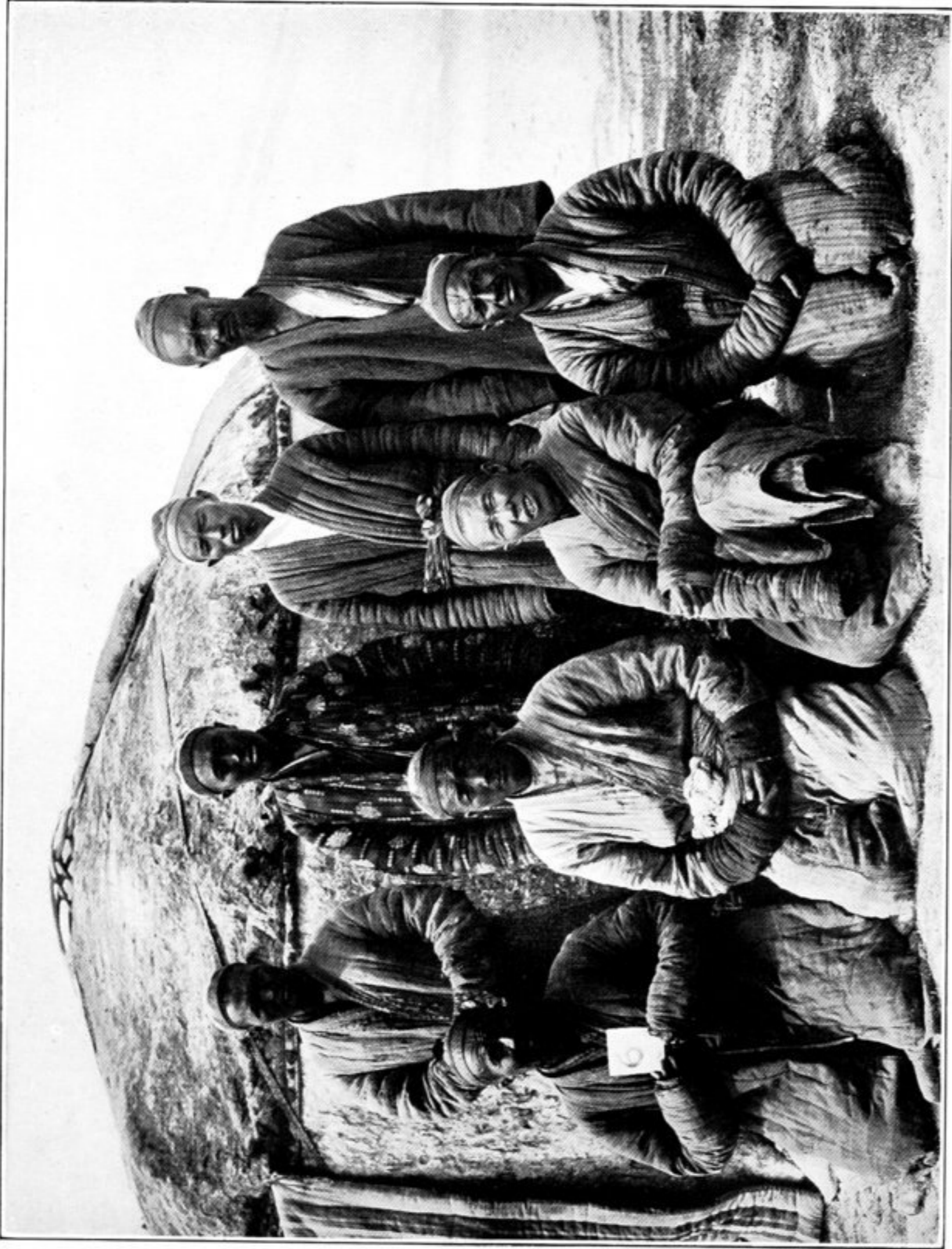
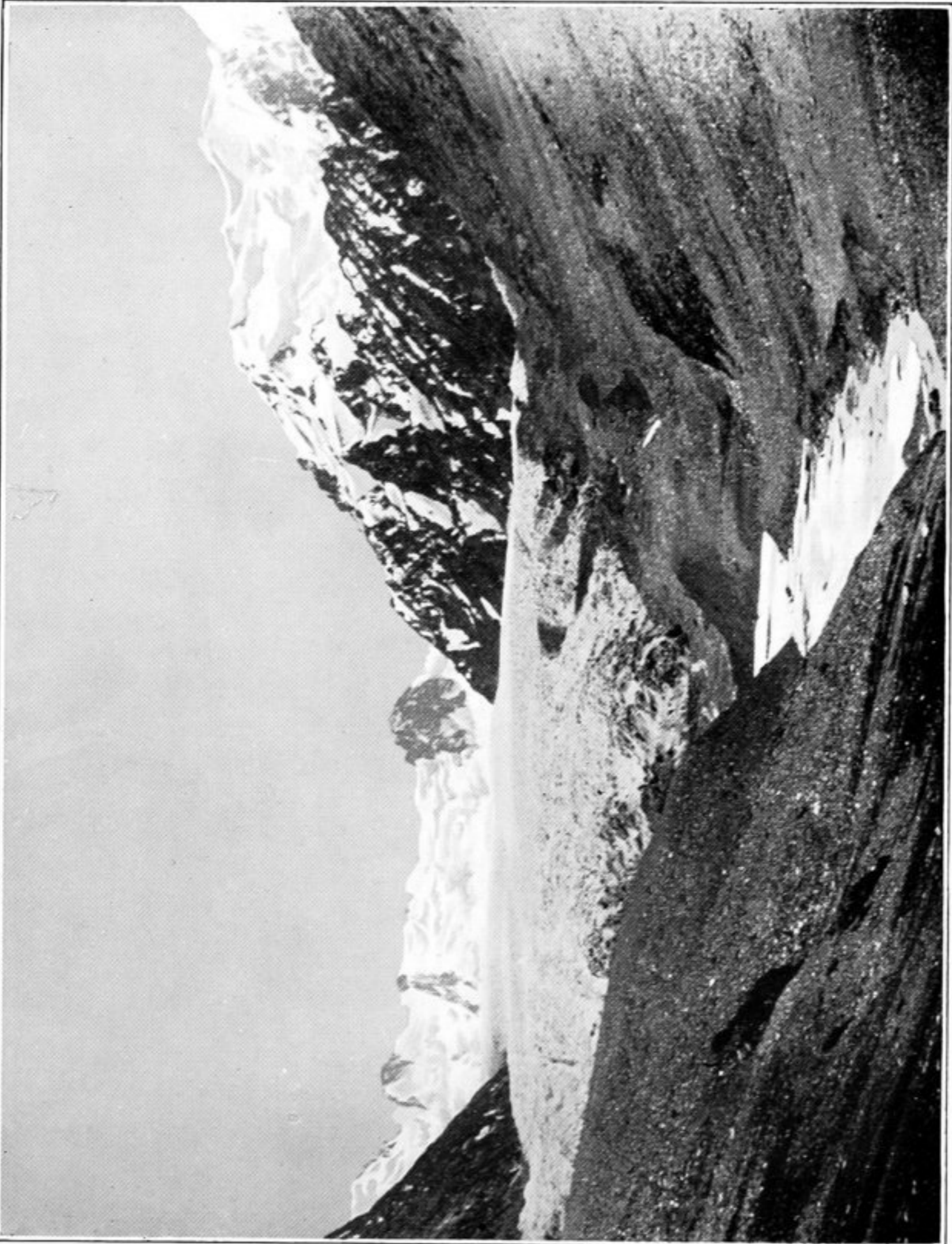


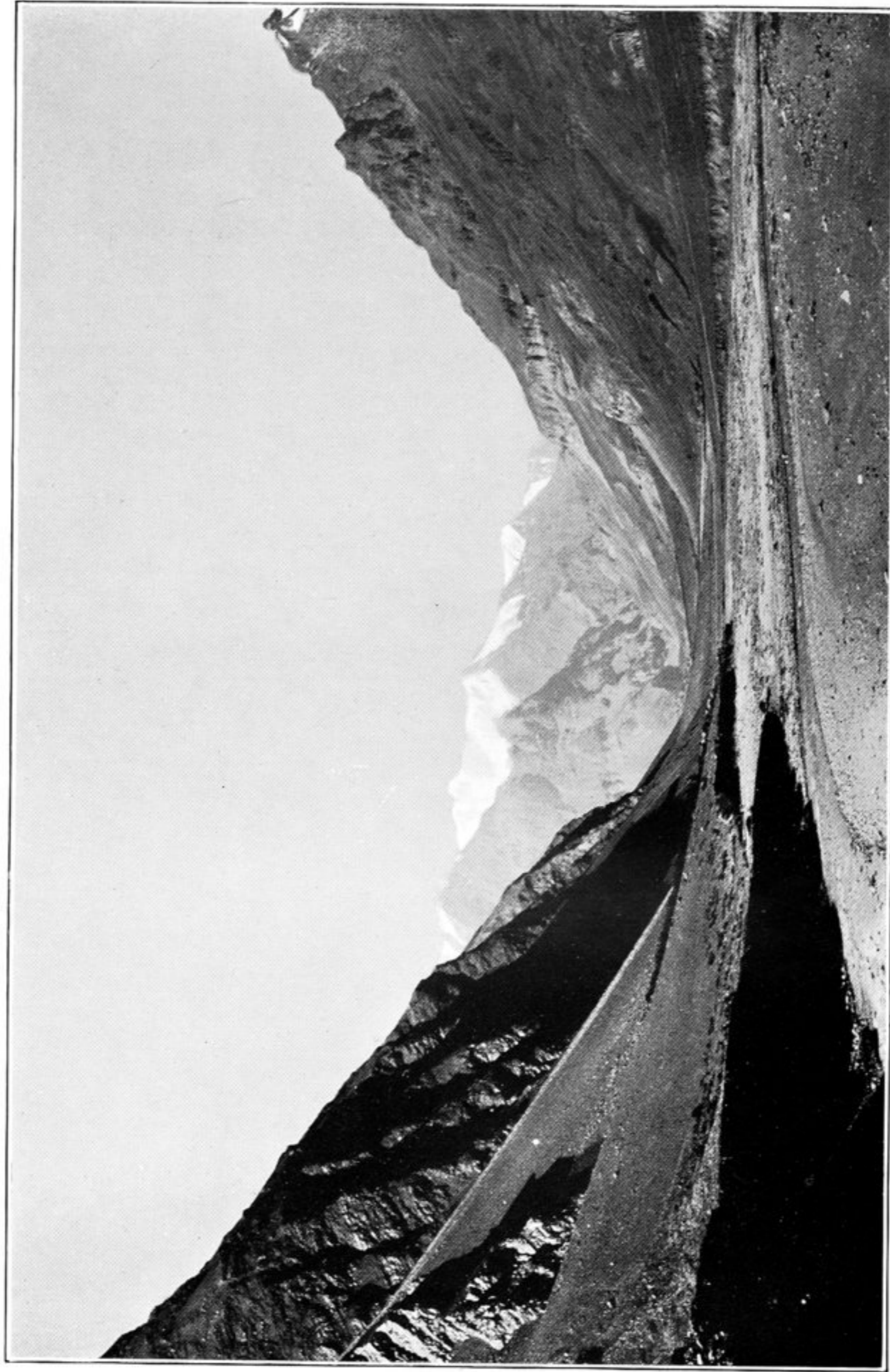
366. ROSHANI HEADMEN AT SAUNAB.



365. KIRGHIZ ANTHROPOMETRICALLY EXAMINED AT KARA-CHIM.



367. GLACIER AT HEAD OF CHAKUR-JILGA.



368. VIEW DOWN TANIMAZ OR KUDARA VALLEY, FROM BELOW KIZIL-TOKAI.