



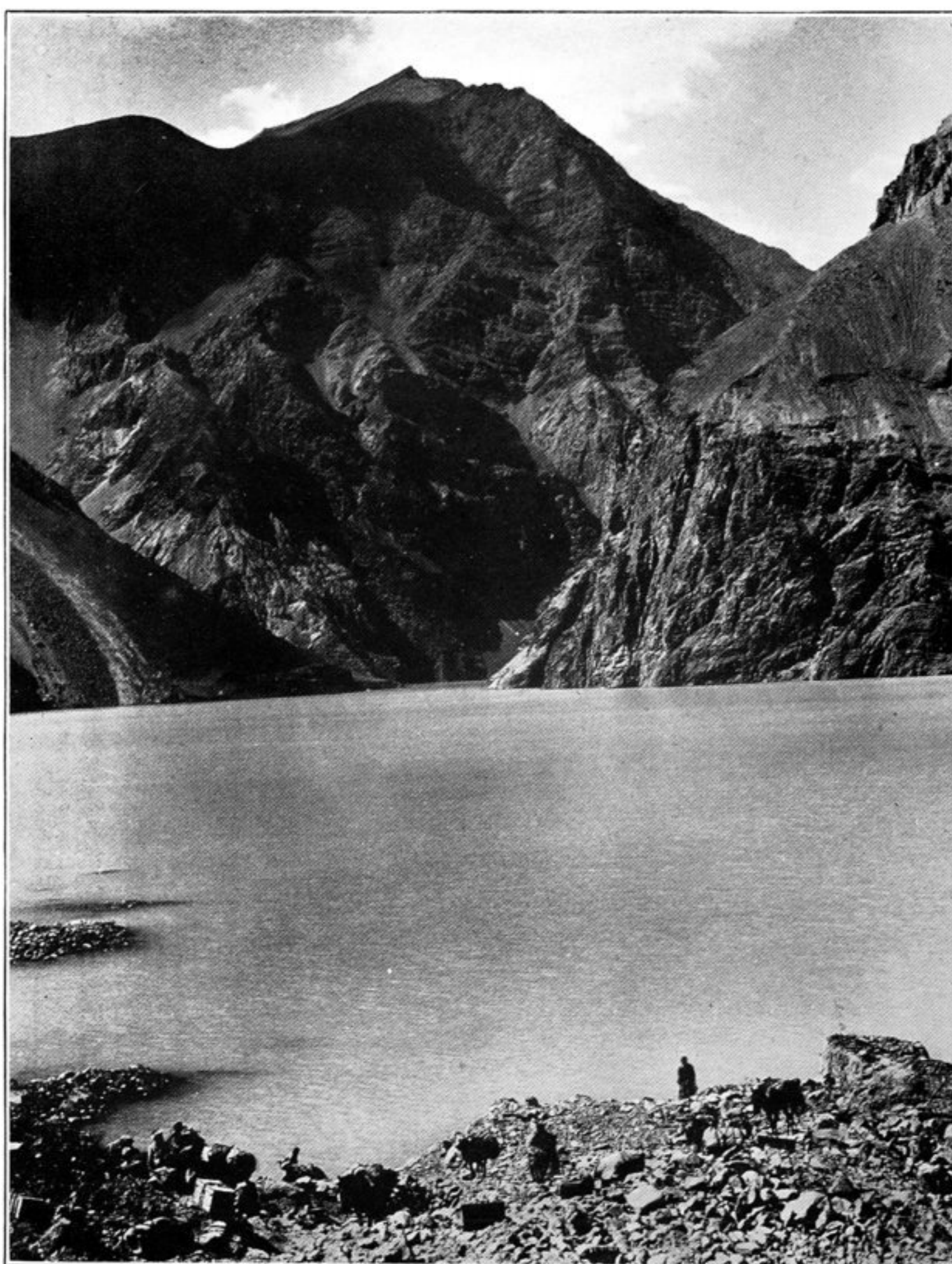
369. CROSSING ROCK DEBRIS THROWN DOWN BY EARTHQUAKE NEAR PALEZ, TANIMAZ VALLEY.



370. VIEW DOWN BARTANG GORGE NEAR NUSUR, RÖSHAN.



371. GORGE OF BARTANG RIVER, ABOVE RAUT, BLOCKED BY EARTHQUAKE.  
Newly formed tarn in foreground ; former river-bed buried under rock debris.



372. SHEDAU LAKE FORMED BY BARRAGE THROWN DOWN BY SÄREZ EARTHQUAKE.