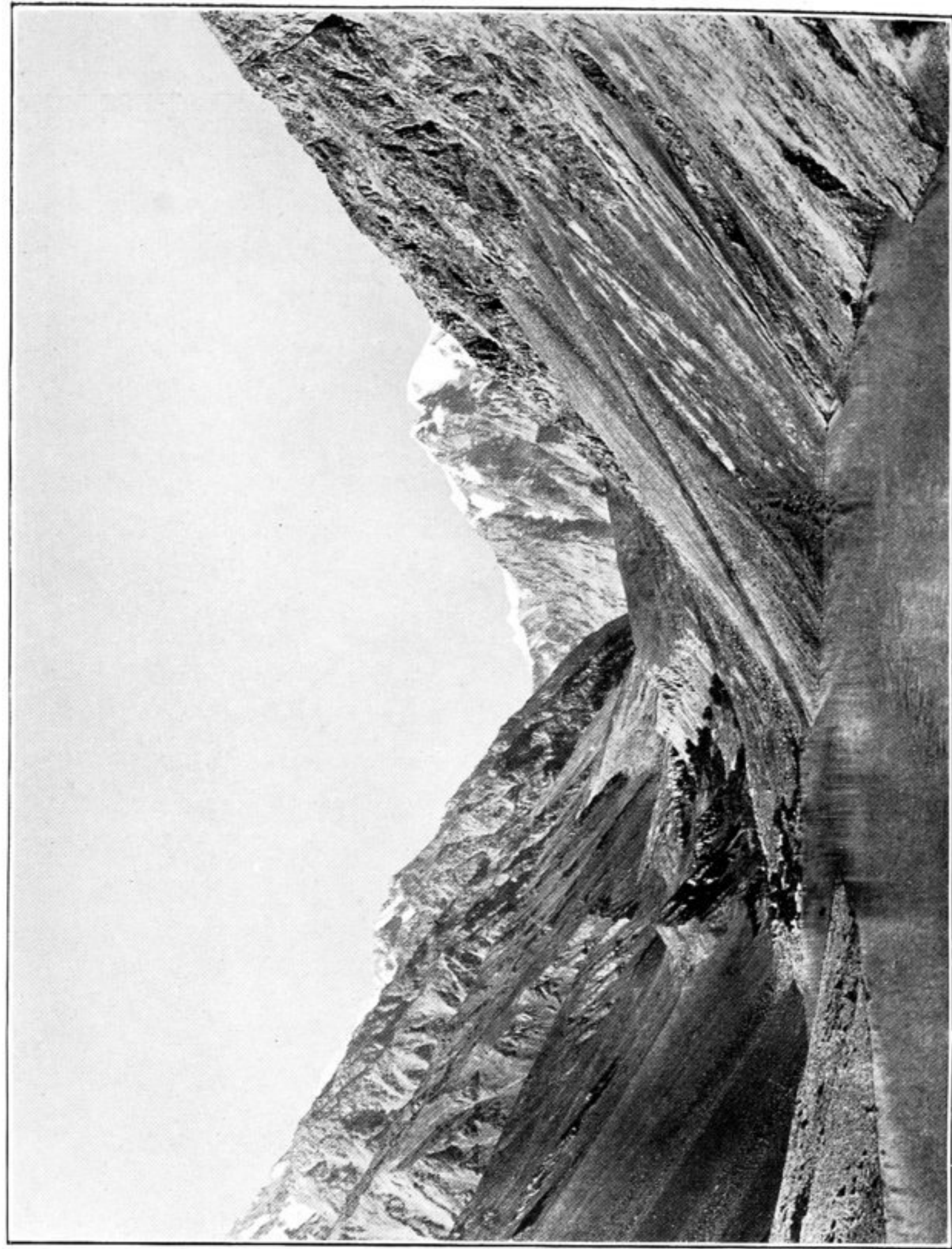


374. VIEW TO NORTH-EAST ACROSS SAREZ LAKE FROM SLOPE ABOVE YERKH FIOR.

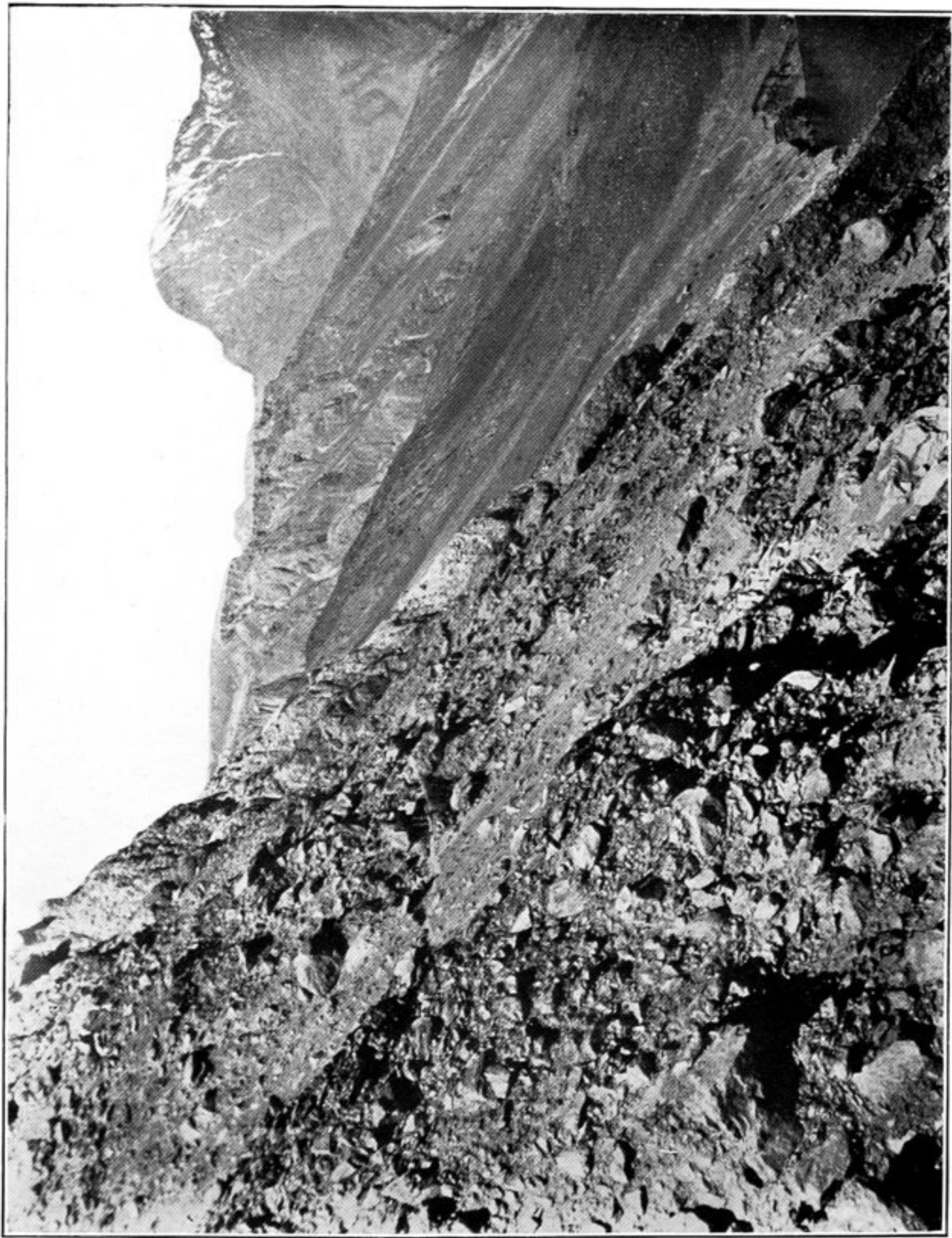


376. UPPER END OF YERKH FIOR, SEEN FROM NORTH.



373. BARRAGE THROWN ACROSS BARTANG VALLEY BY EARTHQUAKE, WITH WESTERN END OF NEWLY FORMED SAREZ LAKE.

View from about 12,000 feet height on Marjanai spur, looking to north-west. Clouds of dust raised by rock movement on higher slopes.



375. PASSAGE OF DEBRIS SCARS ABOVE WESTERN SHORE OF YERKH FIOR.
Arrow points to man crossing by improvised track.