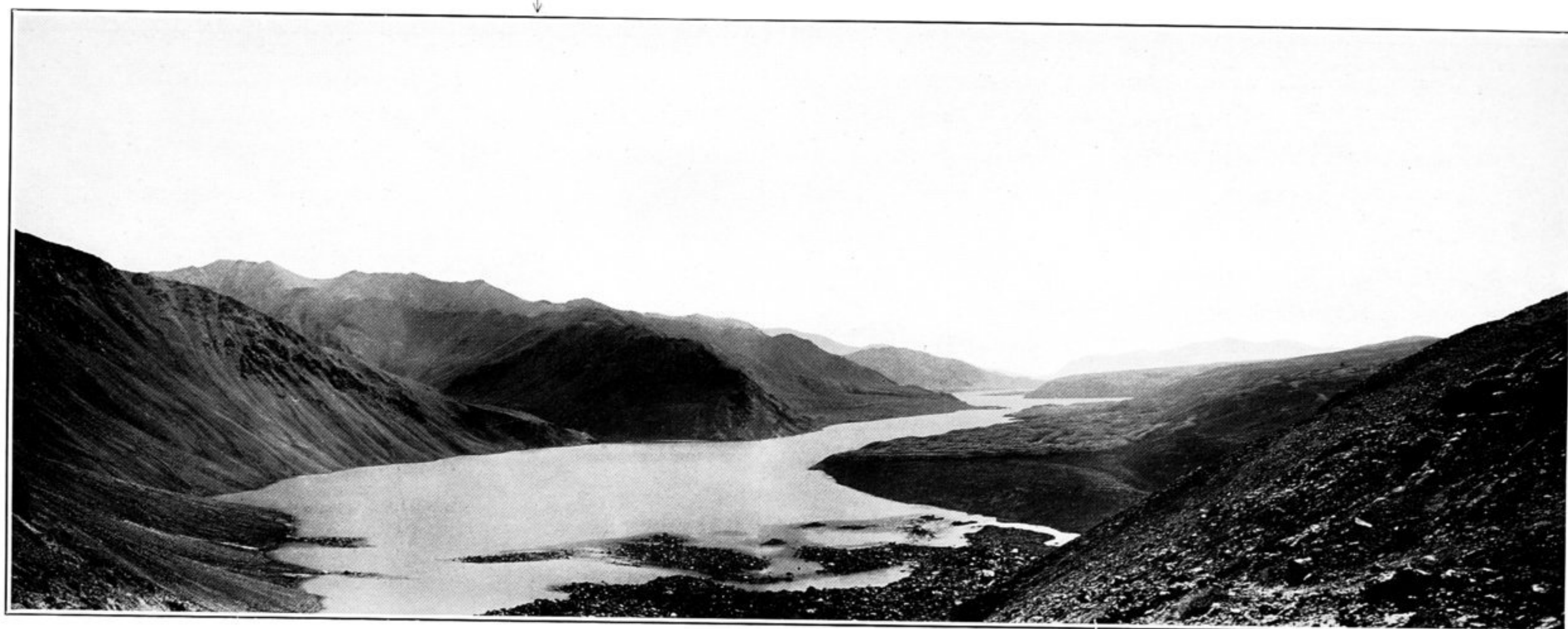
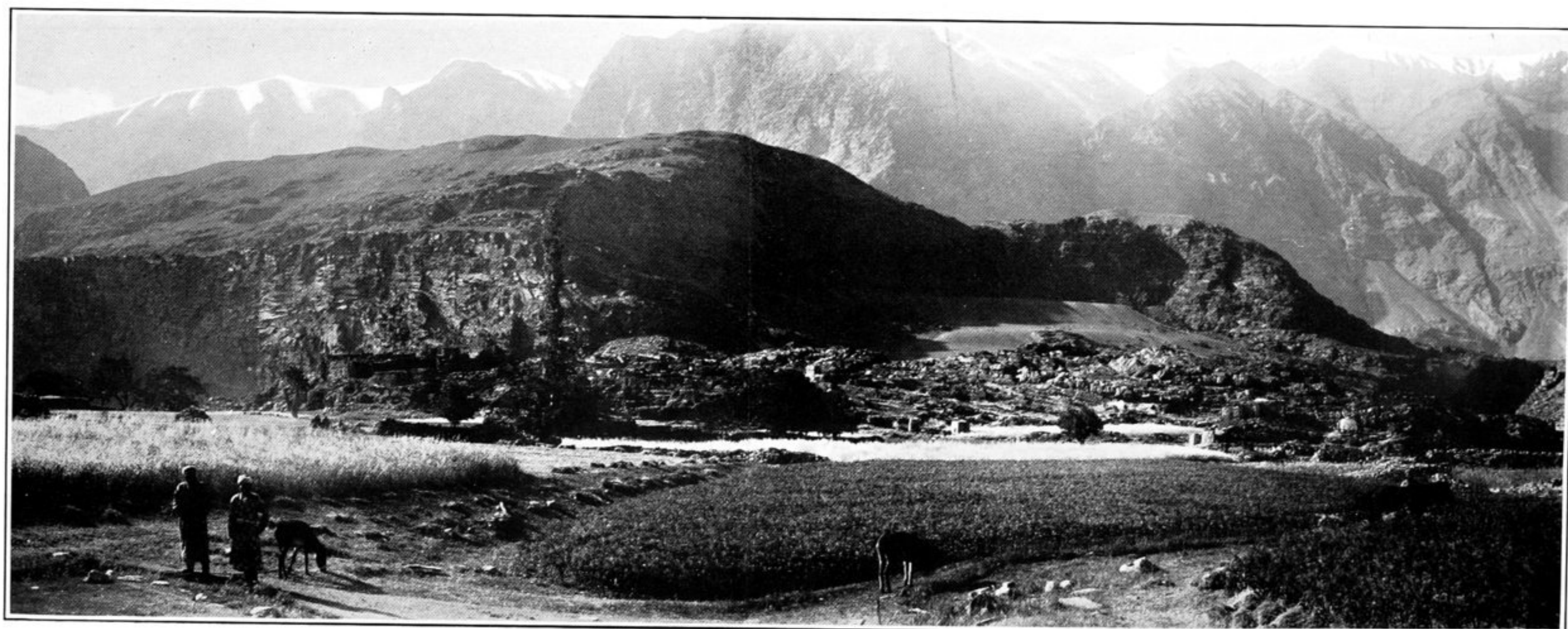


382. TRANS-ALAI RANGE SEEN FROM CAMP YAMĀN-KARCHIN, ACROSS ALAI VALLEY.



383. VIEW OVER YESHIL-KÖL FROM BÜRUMAN RIDGE.
Arrow marks mouth of Little Marjanai valley.



384. VILLAGE AND FIELDS OF SAUNĀB (TĀSH-KURGHĀN), RÖSHĀN.