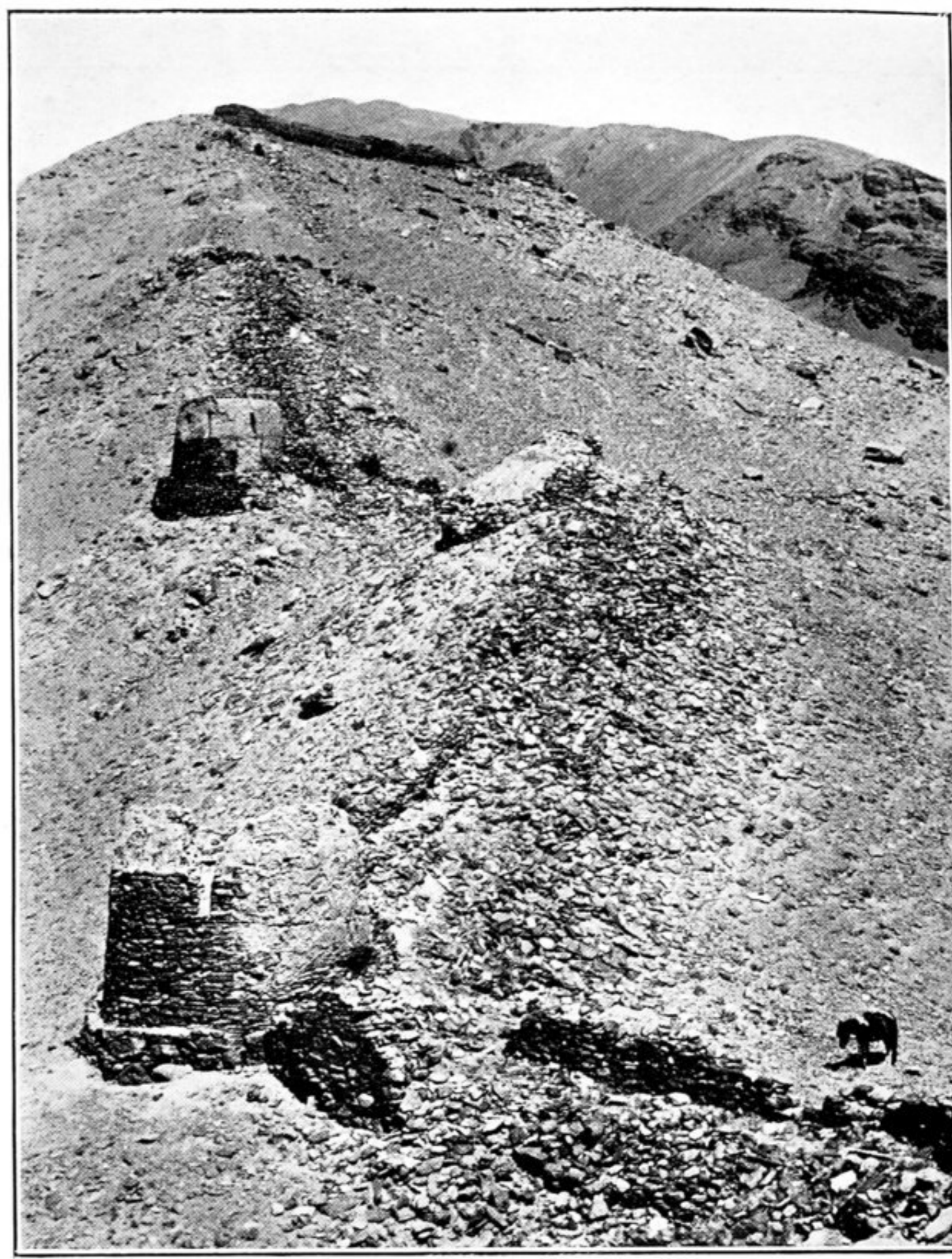
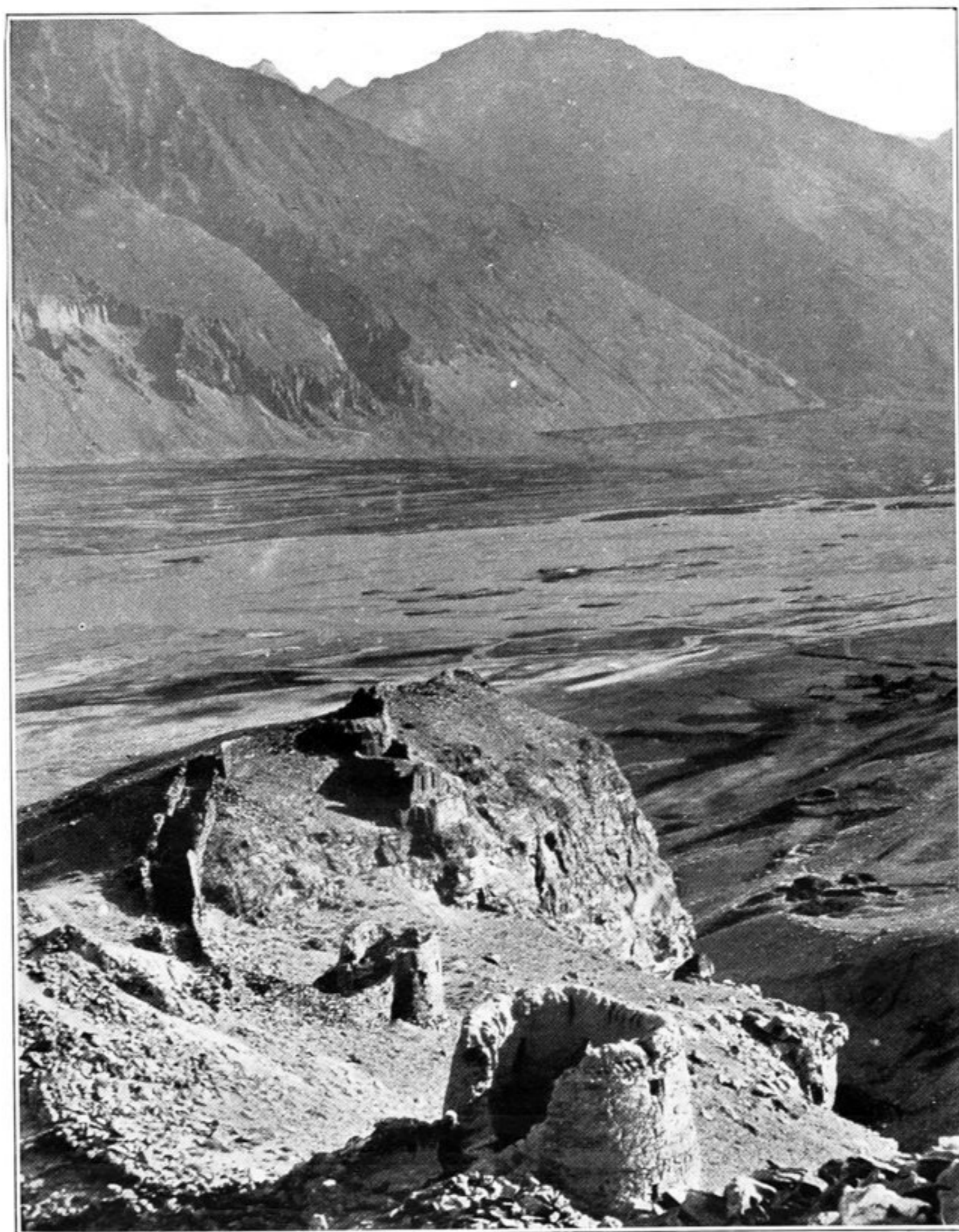


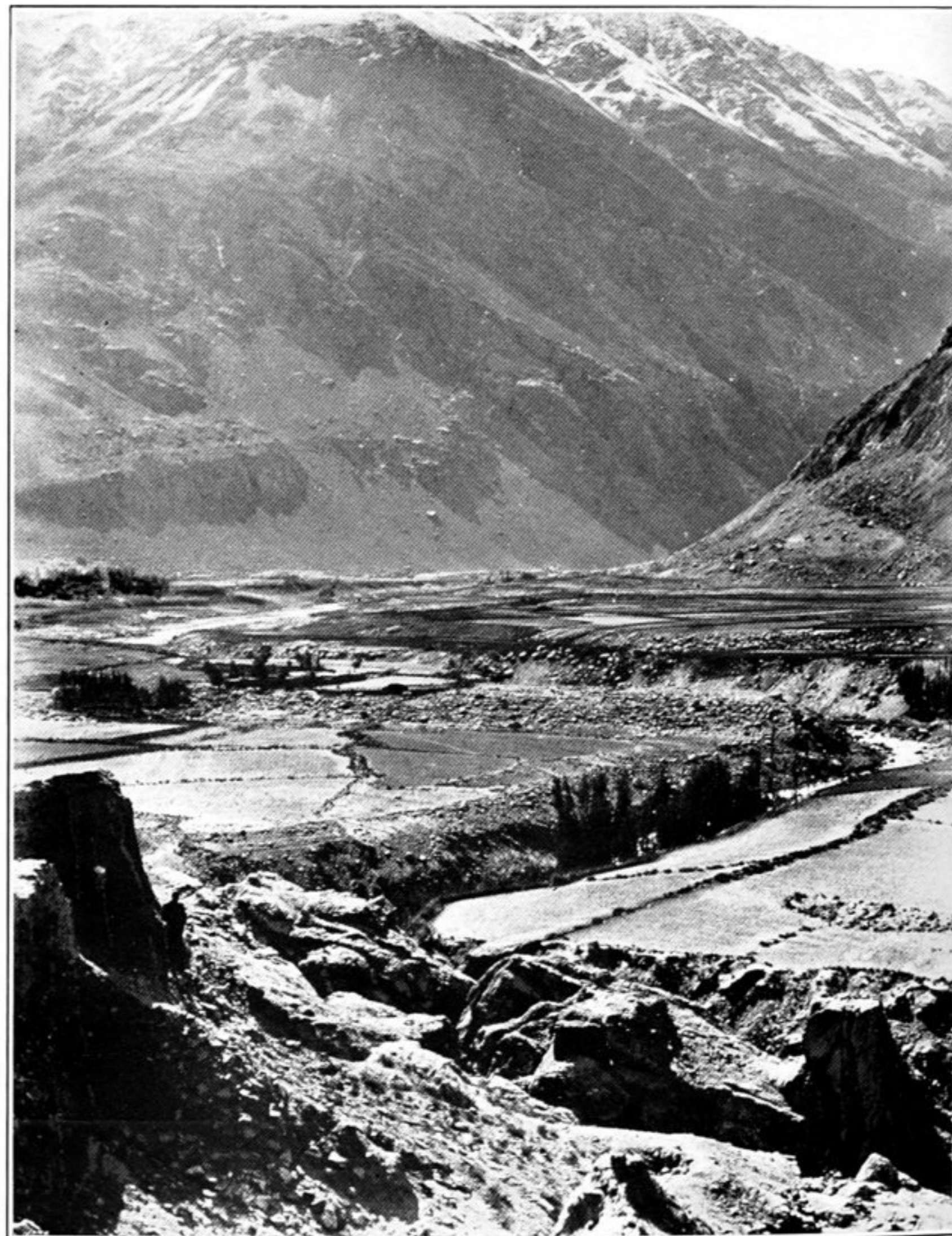
401. RAPIDS OF GREAT PĀMĪR RIVER NEAR MOUTH OF MATS VALLEY.



402. VIEW UP WESTERN FACE OF CIRCUMVALLATION, ZAMR-I-ĀTISH-PARAST.



403. LOOKING DOWN WESTERN LINE OF WALL AND TOWERS, ZAMR-I-ĀTISH-PARAST.



404. TOWERS AT SOUTH-WEST CORNER OF QALA-I-QA'QA, WITH VIEW DOWN AB-I-PANJA.