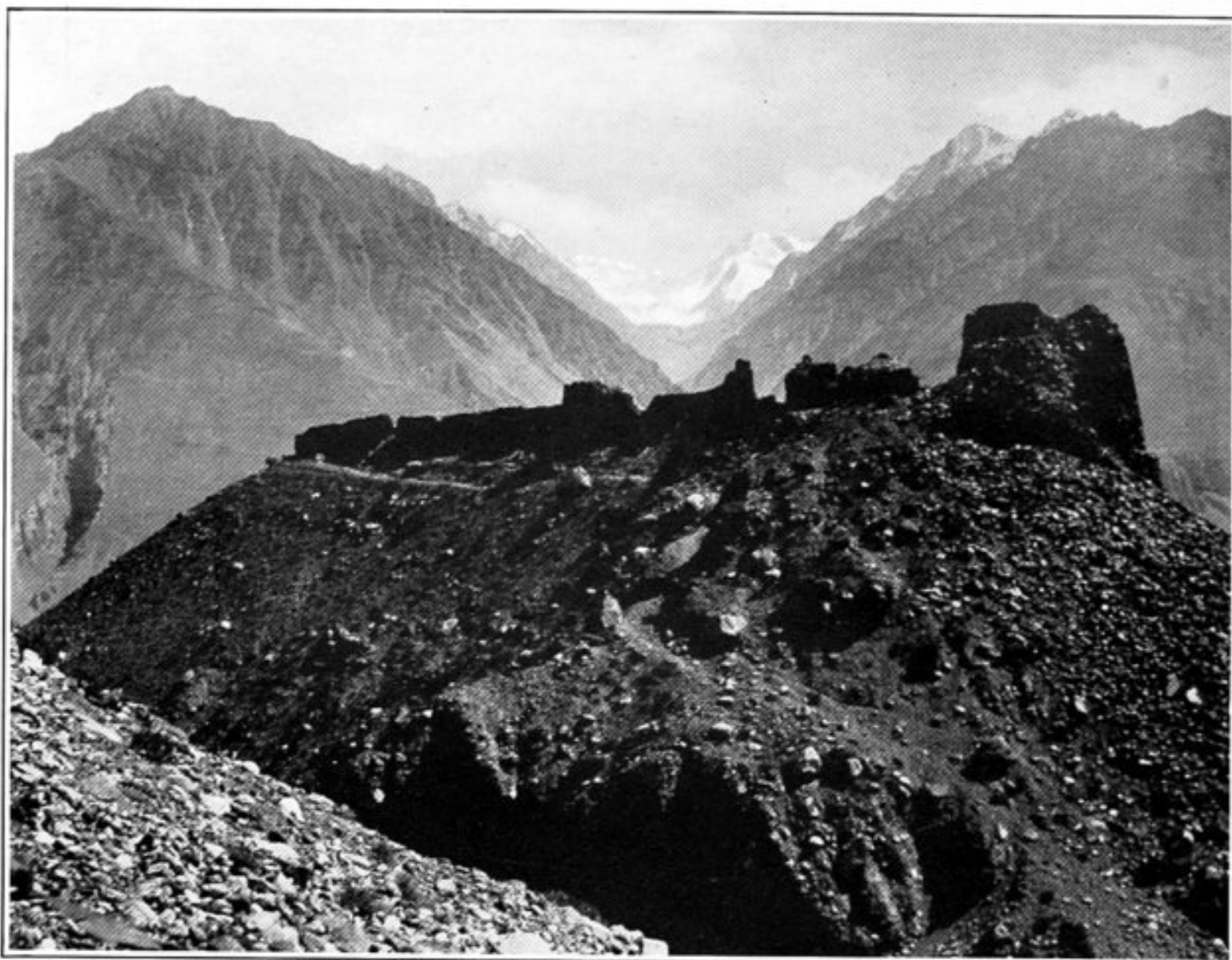




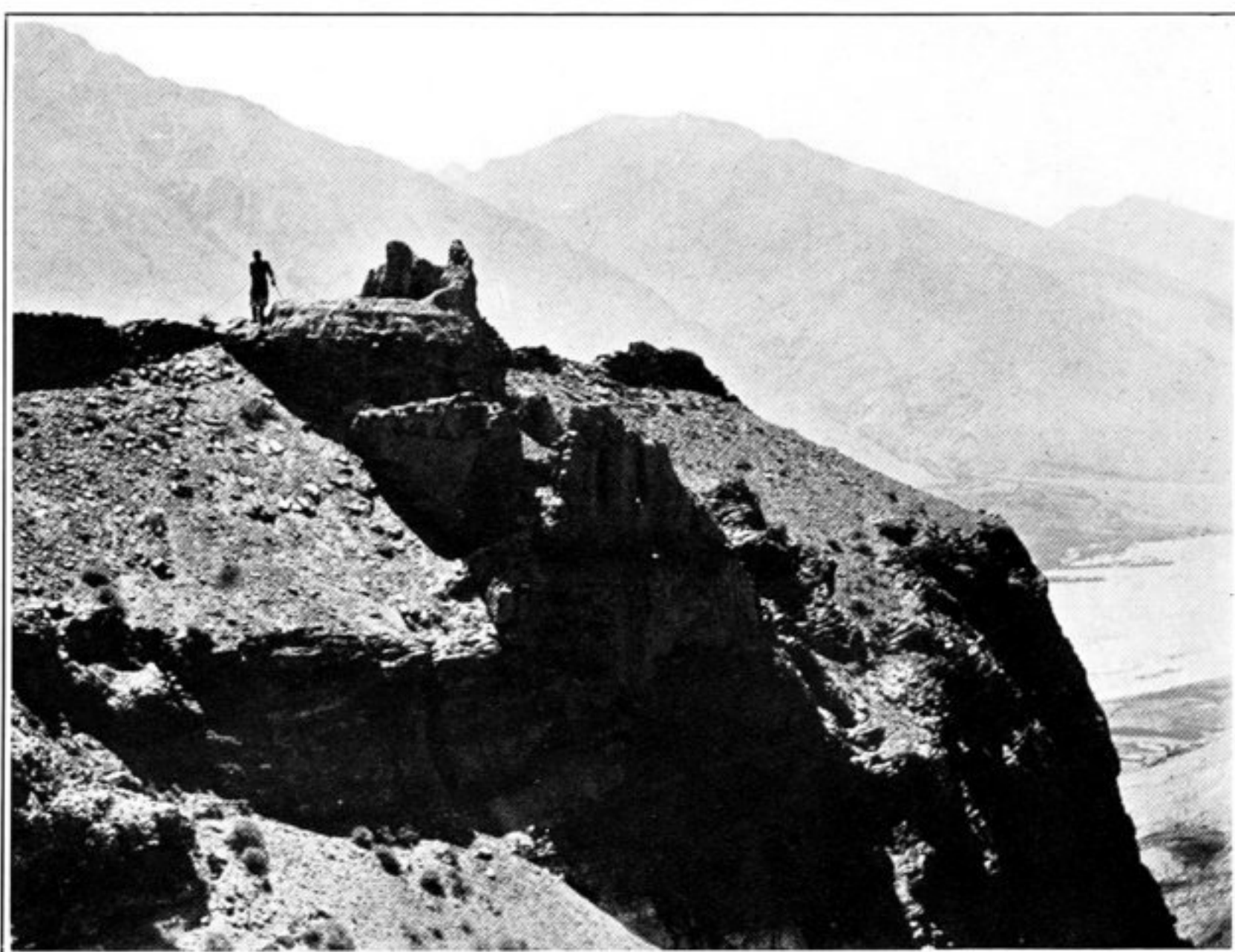
405. TOWER ON SECOND LINE OF WALL, SOUTH FACE, ZAMR-I-ĀTISH-PARAST.



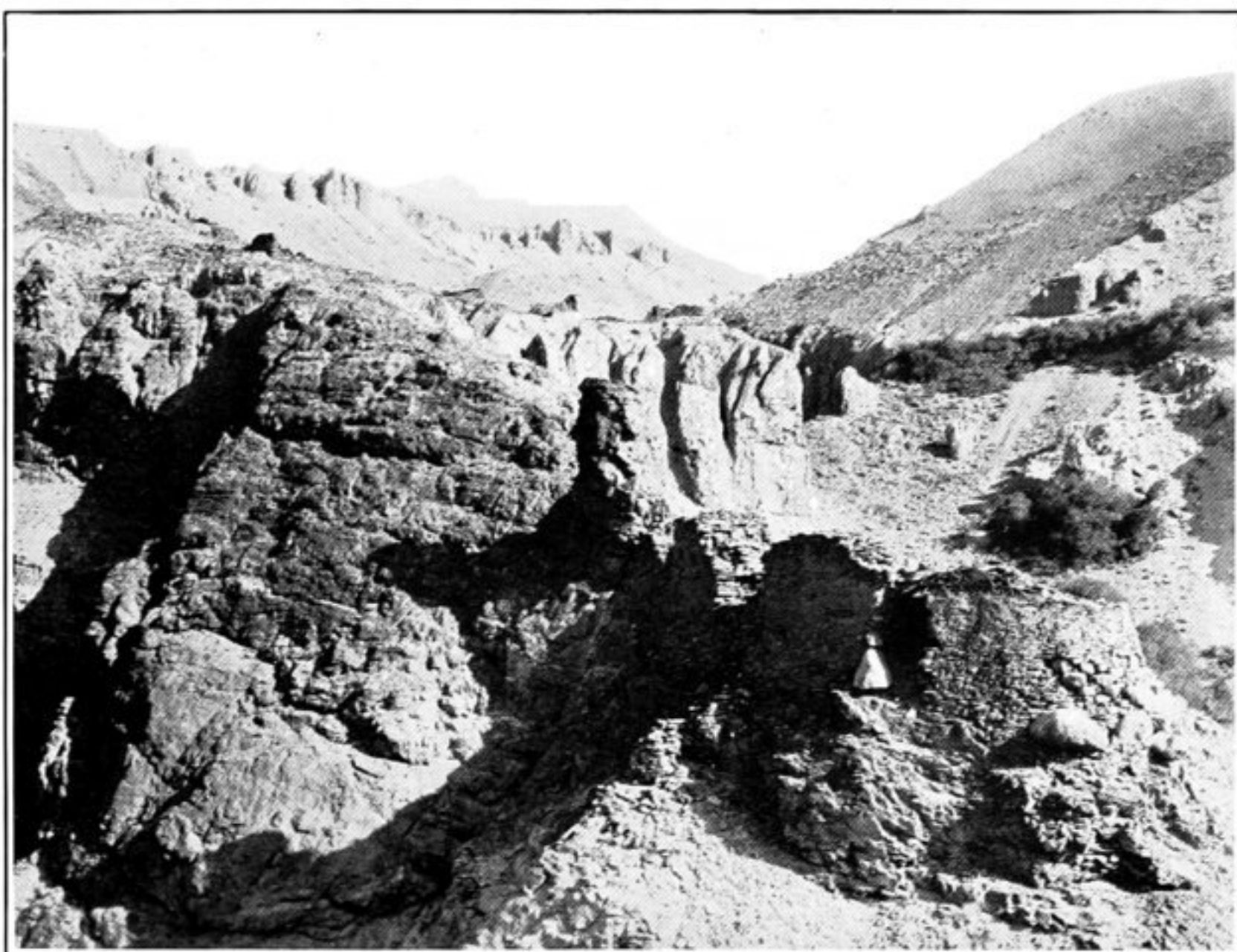
406. CITADEL OF ZAMR-I-ĀTISH-PARAST, SEEN FROM NORTH ACROSS RAVINE.



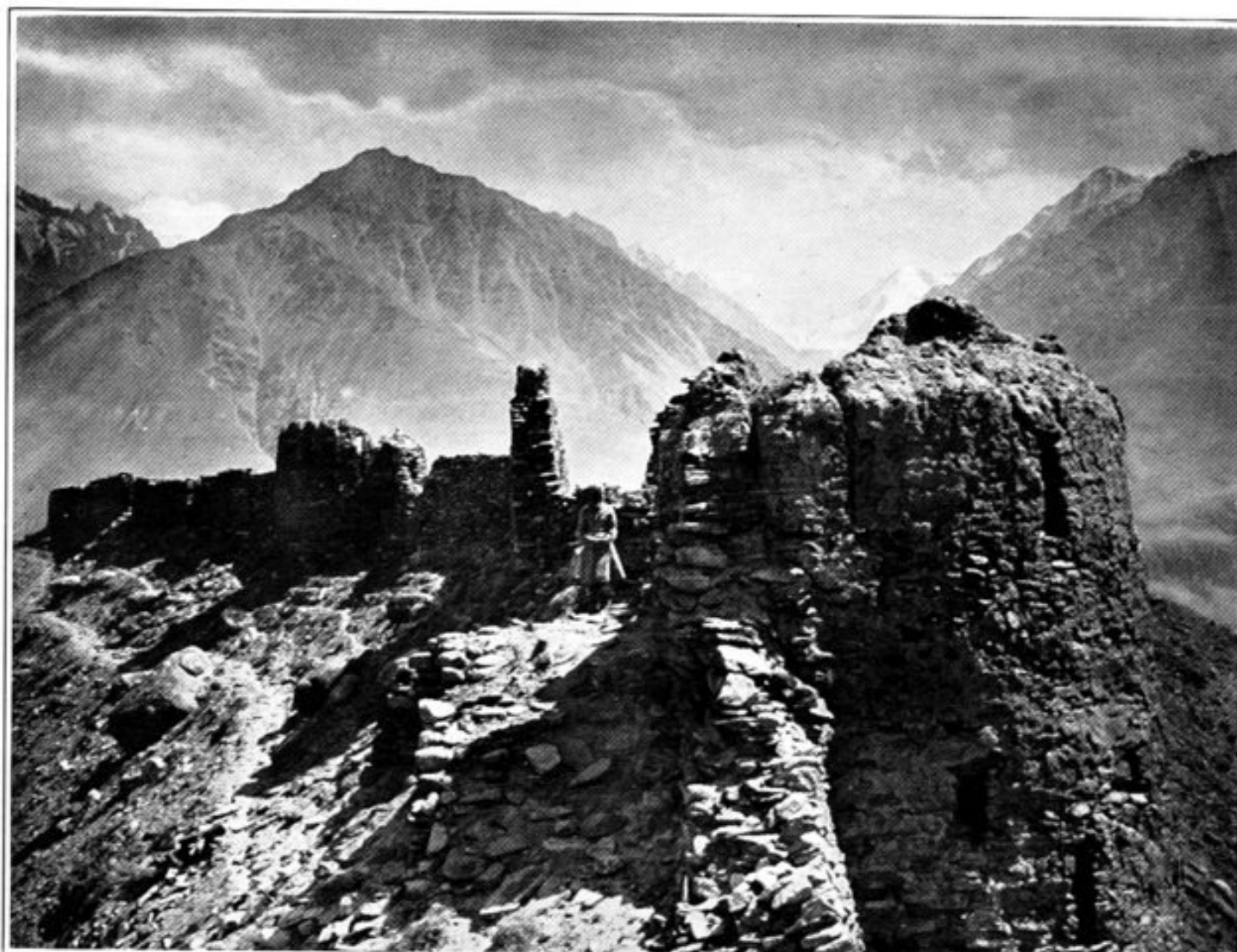
407. TOWER, X, ON EAST FACE OF CIRCUMVALLATION, QALA-I-QA'QA.



408. OUTWORK ON WEST FACE OF CIRCUMVALLATION, ZAMR-I-ĀTISH-PARAST.



409. FORT OF ZULKHOMĀR, ZAMR-I-ĀTISH-PARAST, SEEN FROM SOUTH.



410. RAVELIN WITH TOWER AT NORTH END OF CITADEL, ZAMR-I-ĀTISH-PARAST.