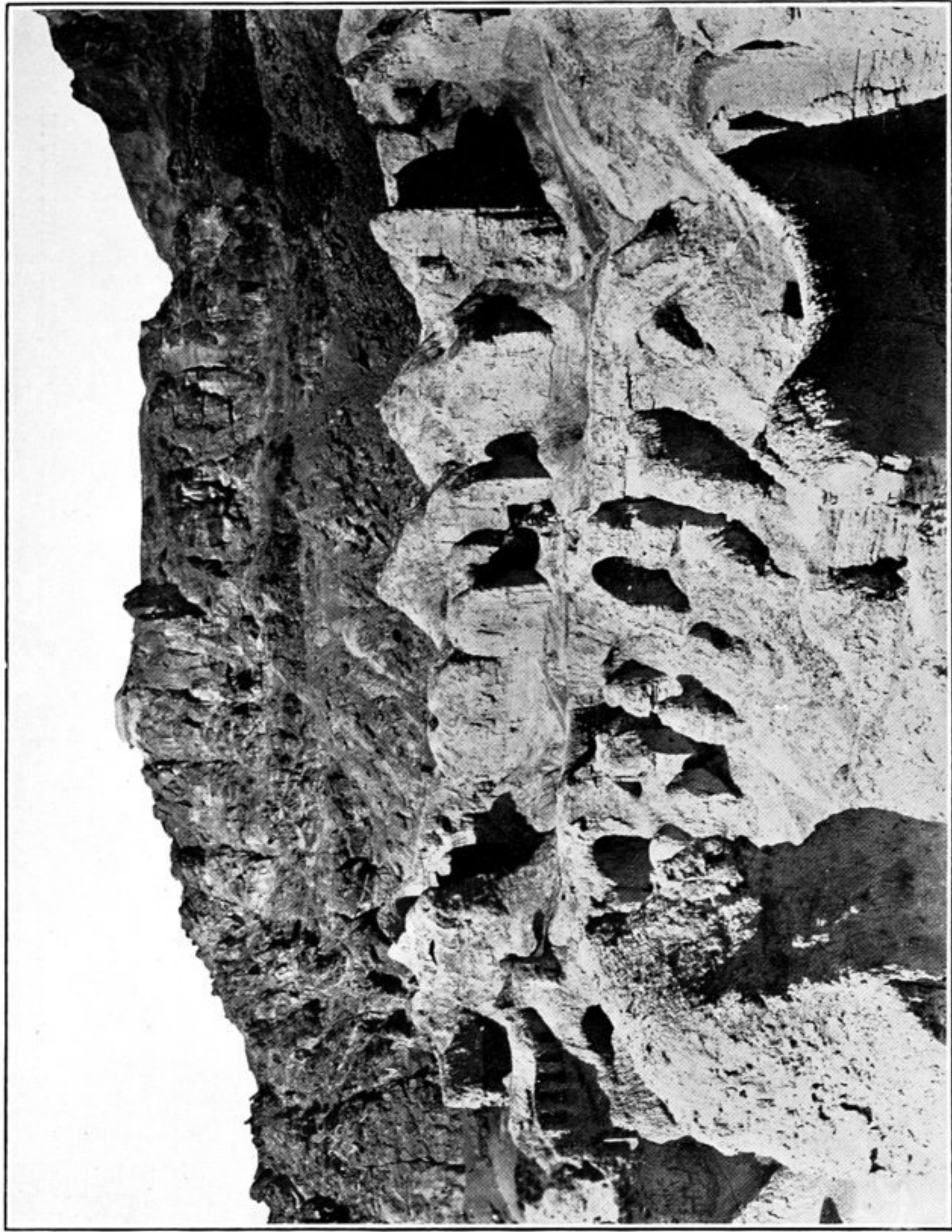
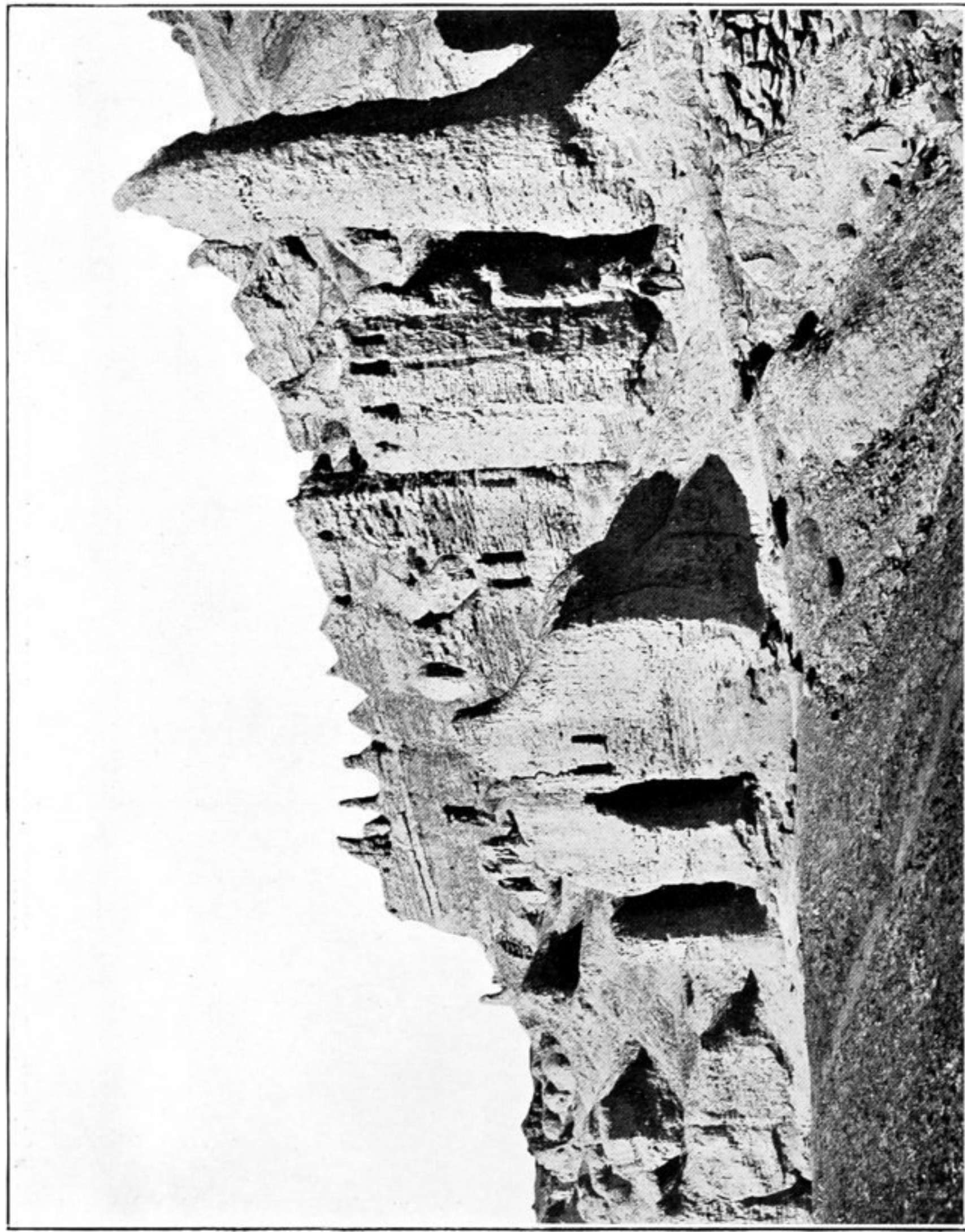




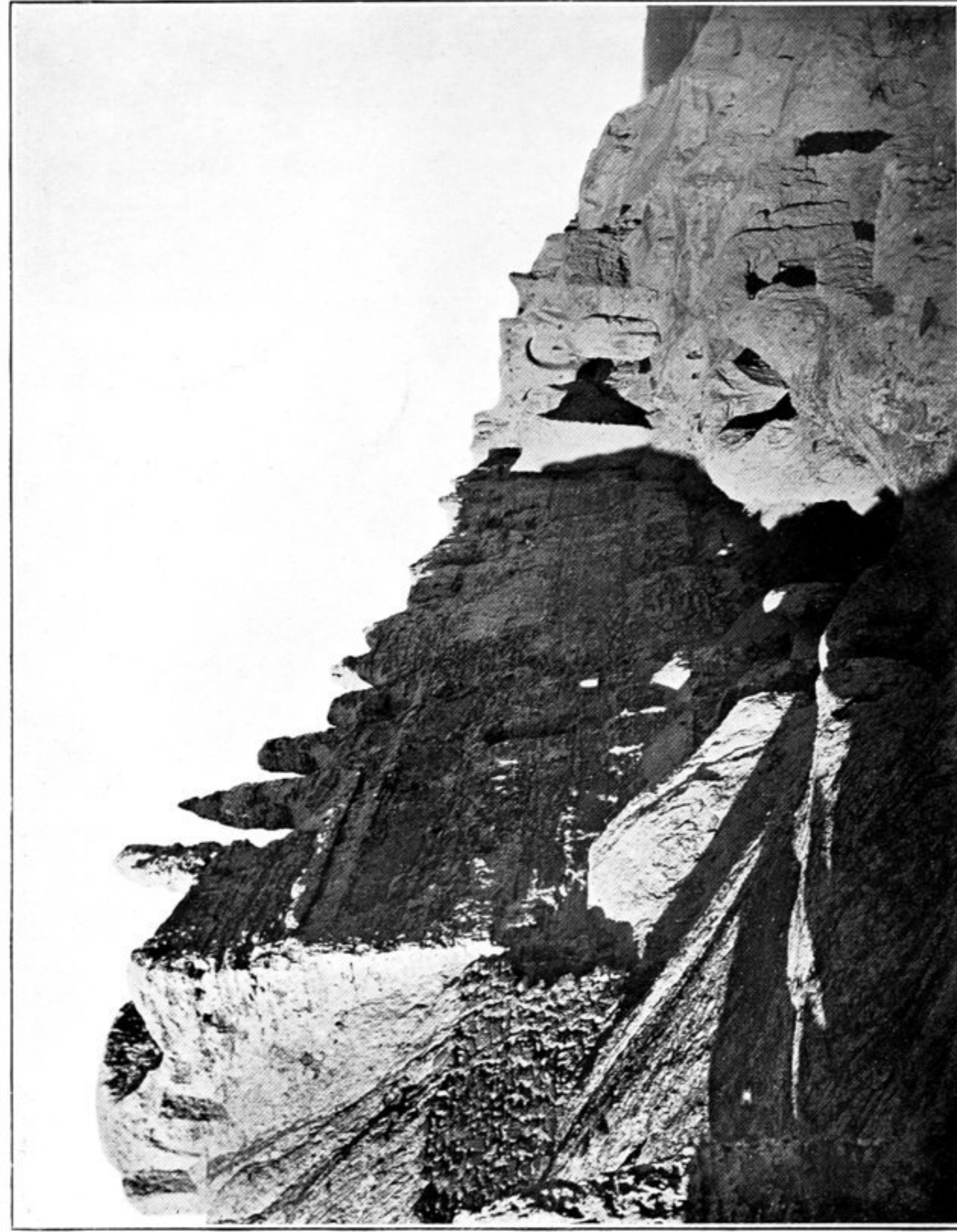
457. RUINS OF GHĀGHA-SHAHR, SEEN FROM KOK-I-ZĀL.



458. RUINED TERRACE AND STRUCTURES ON NORTH-WEST SIDE OF QUADRANGLE, GHĀGHA-SHAHR.  
Cliffs below Kok-i-Zāl seen in background.



459. SOUTH-EASTERN CORNER OF CIRCUMVALLATION, GHĀGHA-SHAHR.  
Gate towers on right.



460. SUPPORTING WALL AND GATE OF OUTER COURT, GHĀGHA-SHAHR.