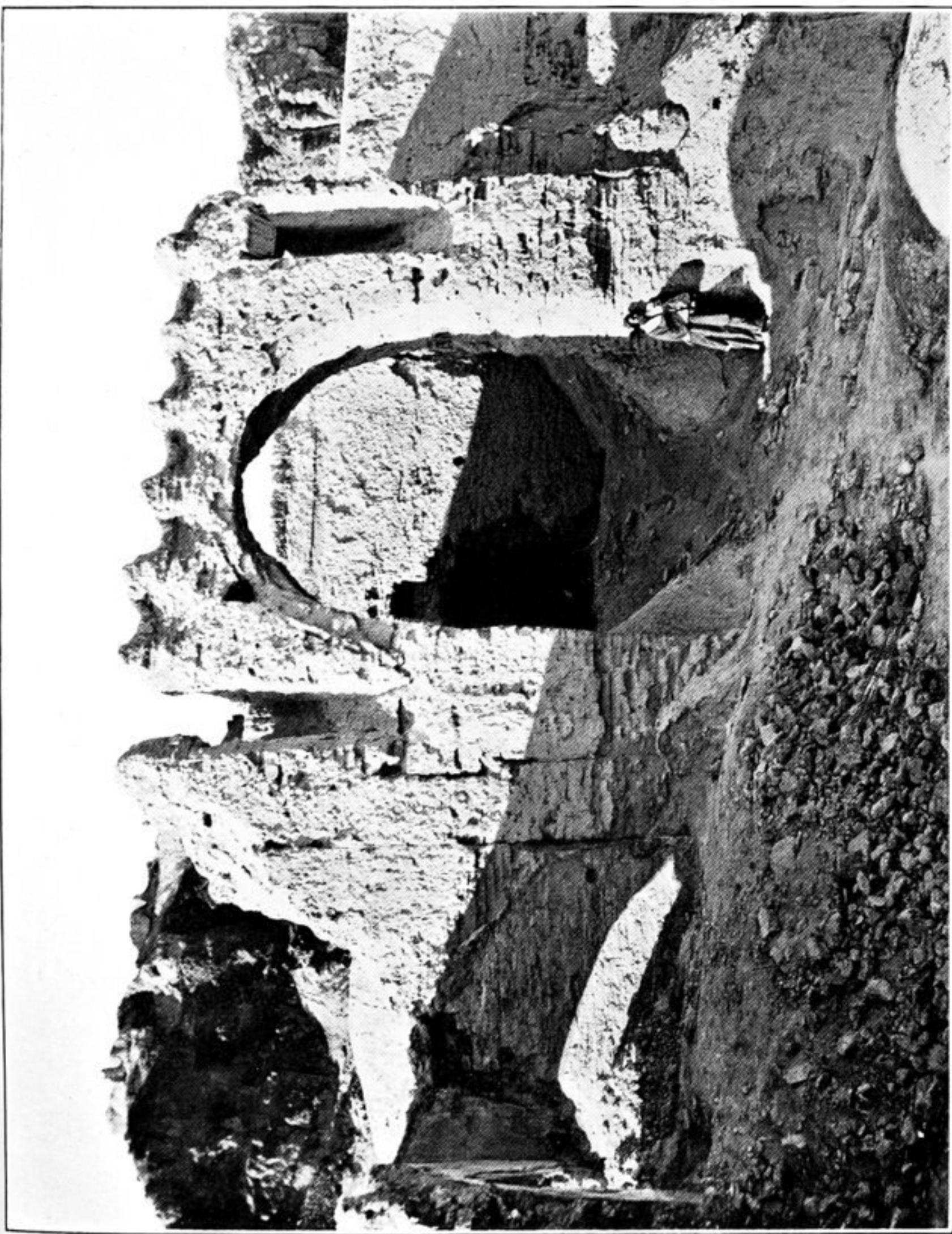


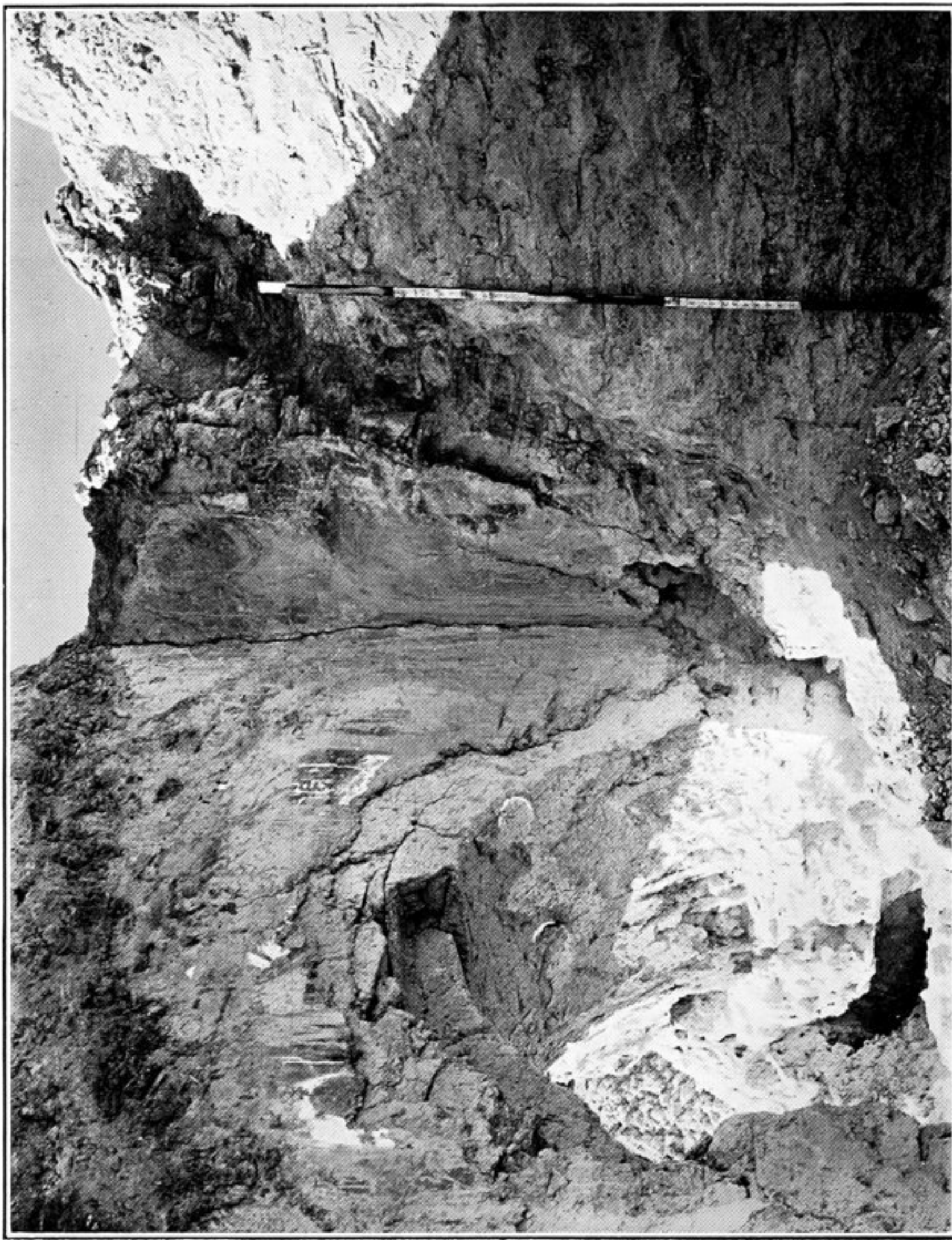
466. REMAINS OF PLASTER RELIEFS ON OUTER WALLS OF STRUCTURE V, GHĀGHA-SHAHR.



468. REMAINS OF MURAL PAINTINGS ON EARLIER WALL OF PASSAGE I, GHĀGHA-SHAHR.
(For descriptive details, see pp. 913 sqq.)



465. INNER GATE LEADING TO QUADRANGLE, GHĀGHA-SHAHR.
On left of gate is seen the position where passage I stood.



467. WESTERN CORNER OF PASSAGE I, GHĀGHA-SHAHR, AFTER REMOVAL OF LATER WALLS.
Arrow indicates position of remains of painted standing figure.