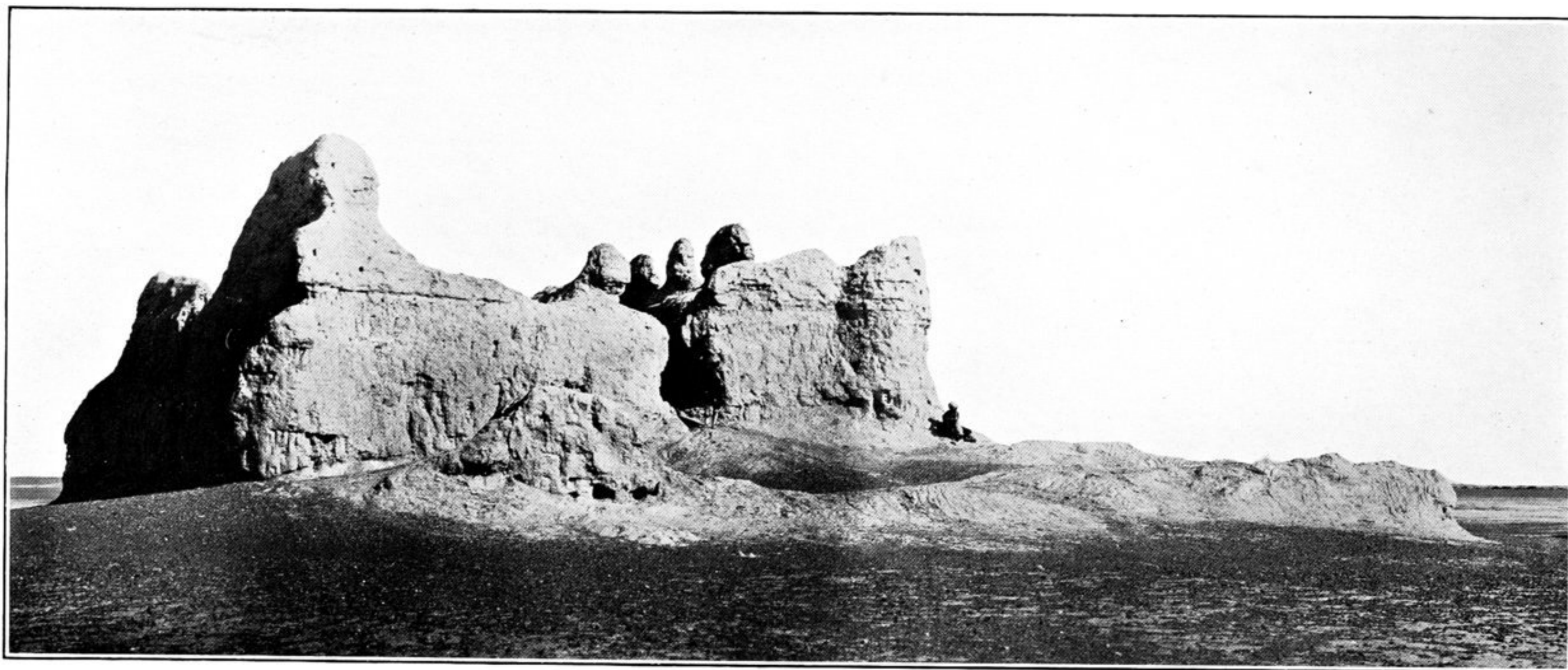
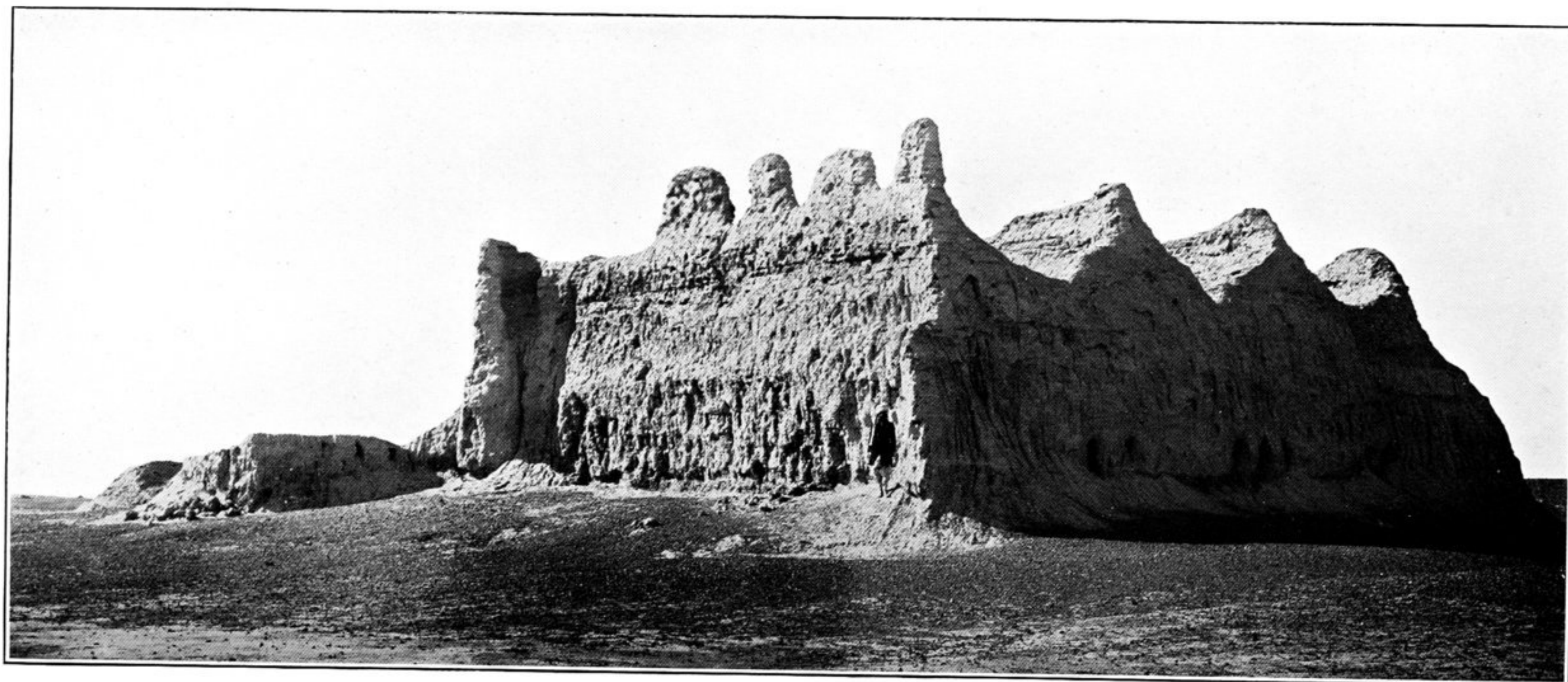


479. RUIN OF FORTIFIED POST, R.R. V, SEEN FROM SOUTH.
In foreground line of late canal.



480. SOUTH FACE OF RUINED FORT, BURJ-I-CHĀKAR (R.R. IV).



481. RUINED FORT OF BURJ-I-CHĀKAR (R.R. IV), SEEN FROM NORTH-EAST.