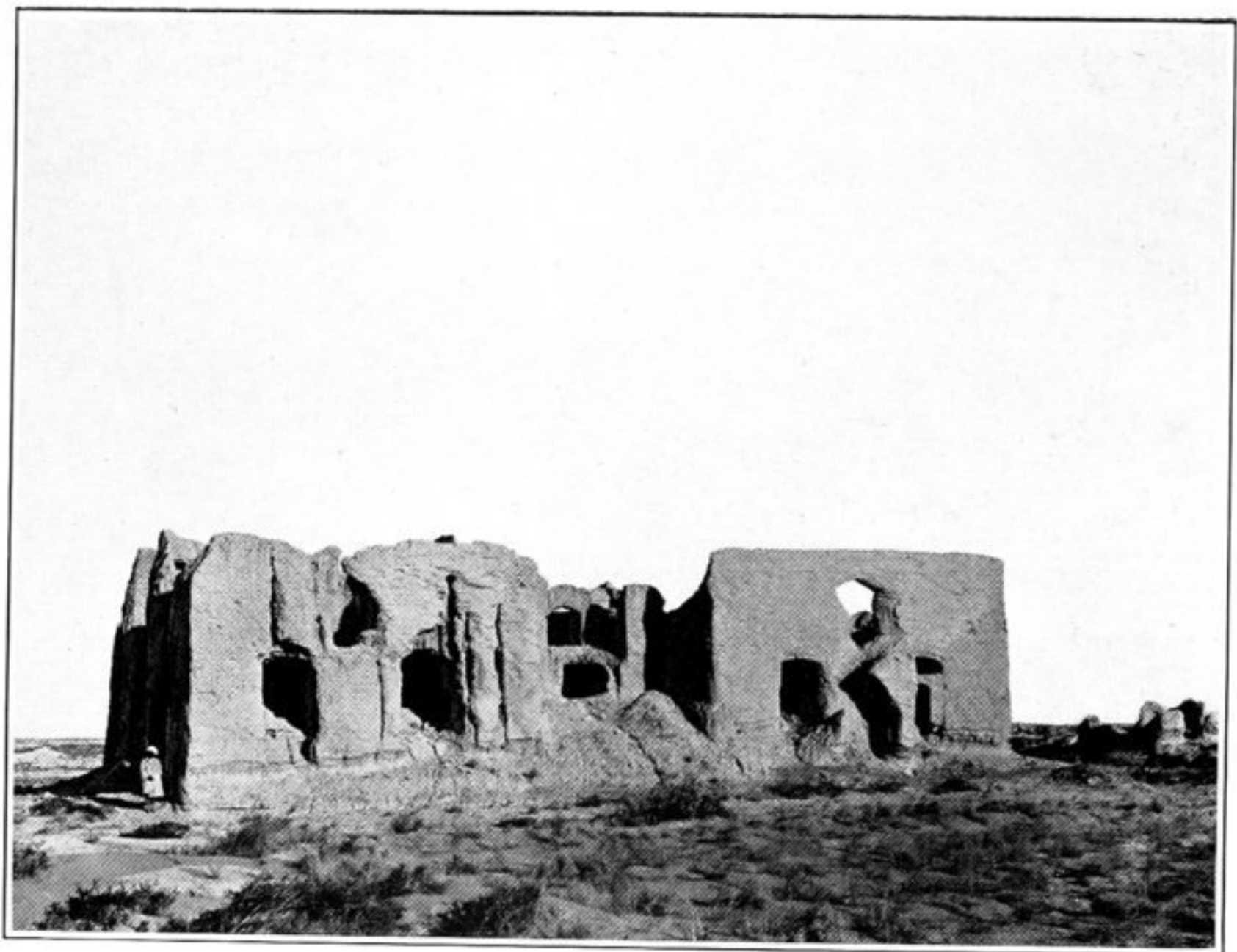
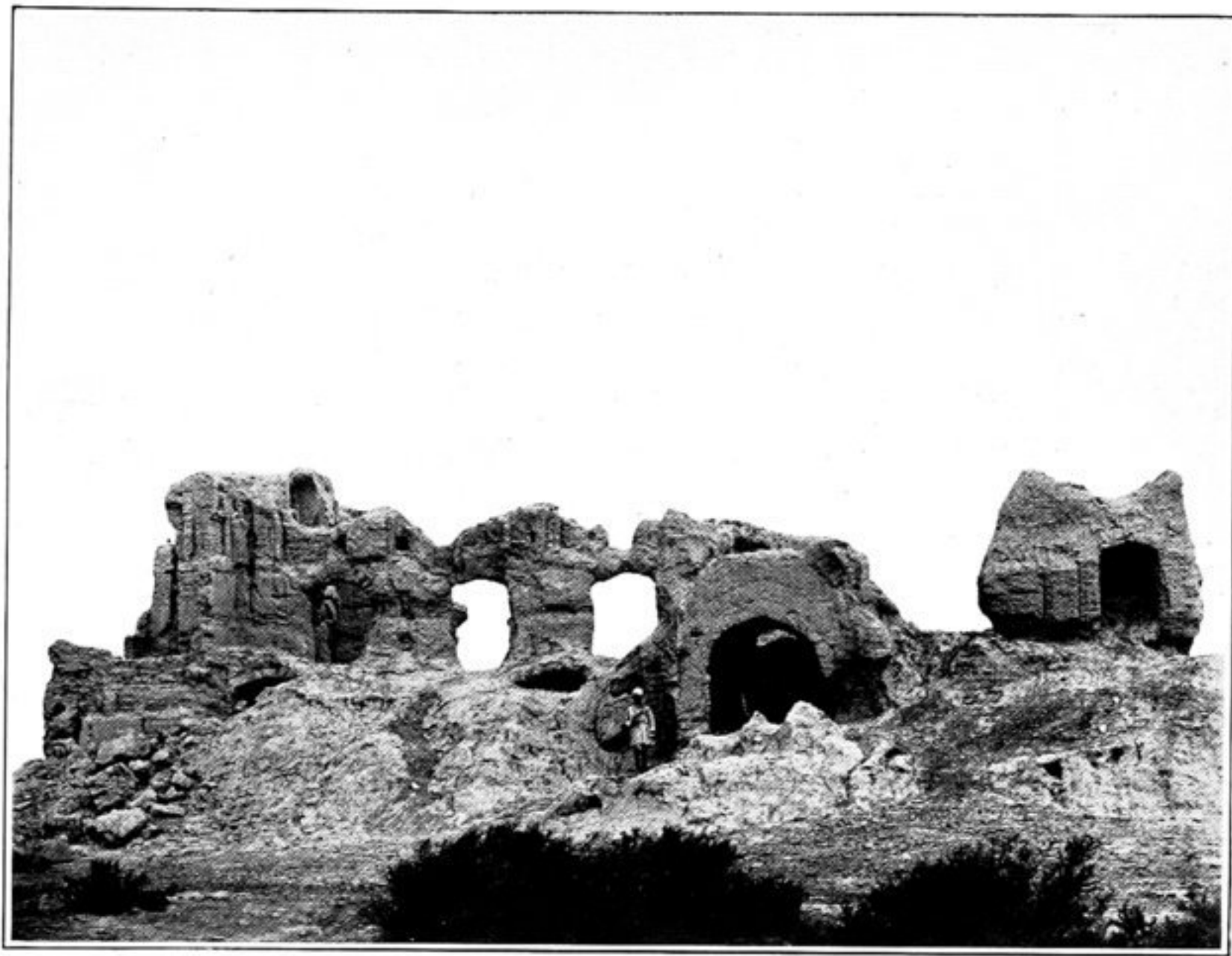


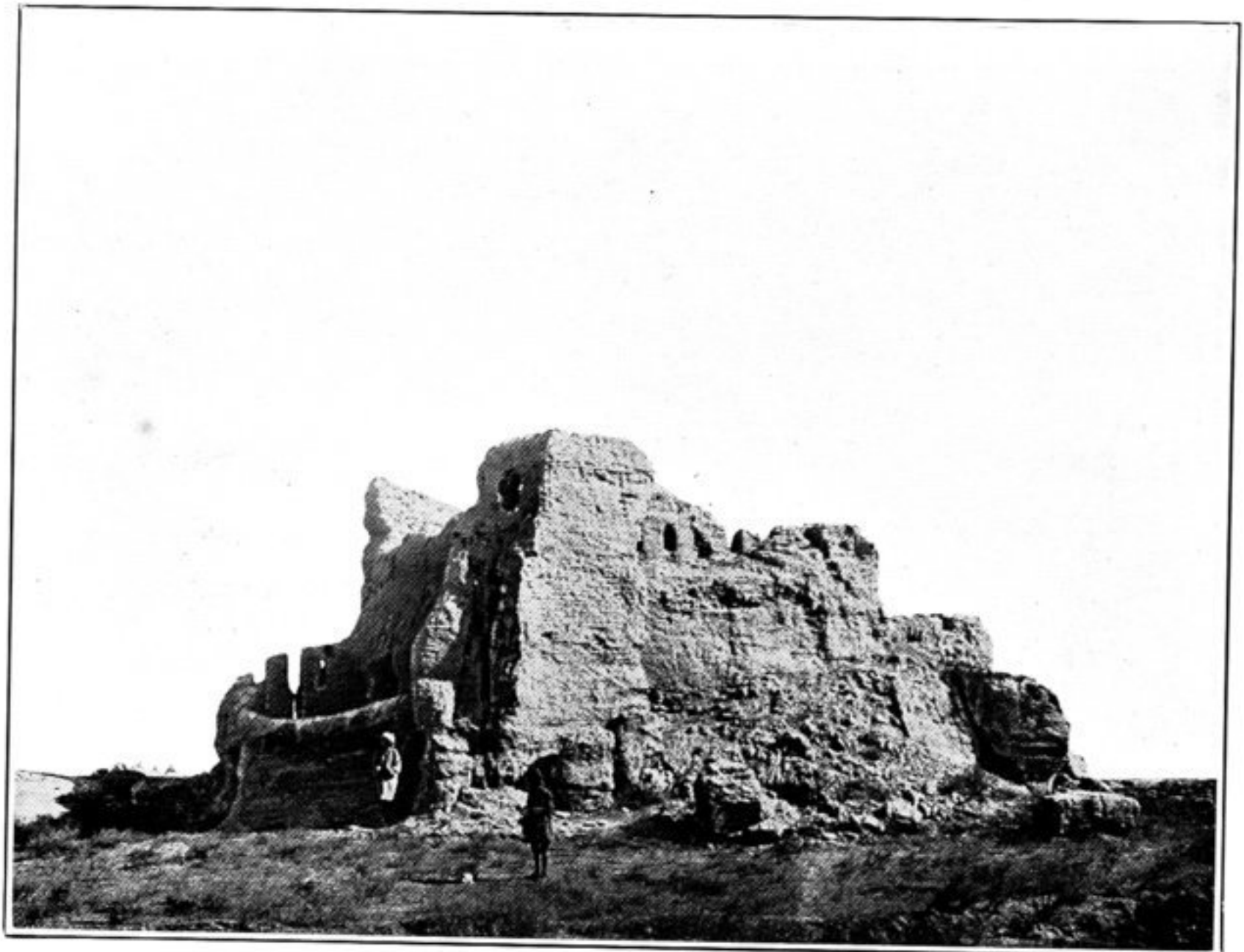
494. GATE OF RUINED FORT VILLAGE, RĀMRŪD, SEEN FROM WITHIN.



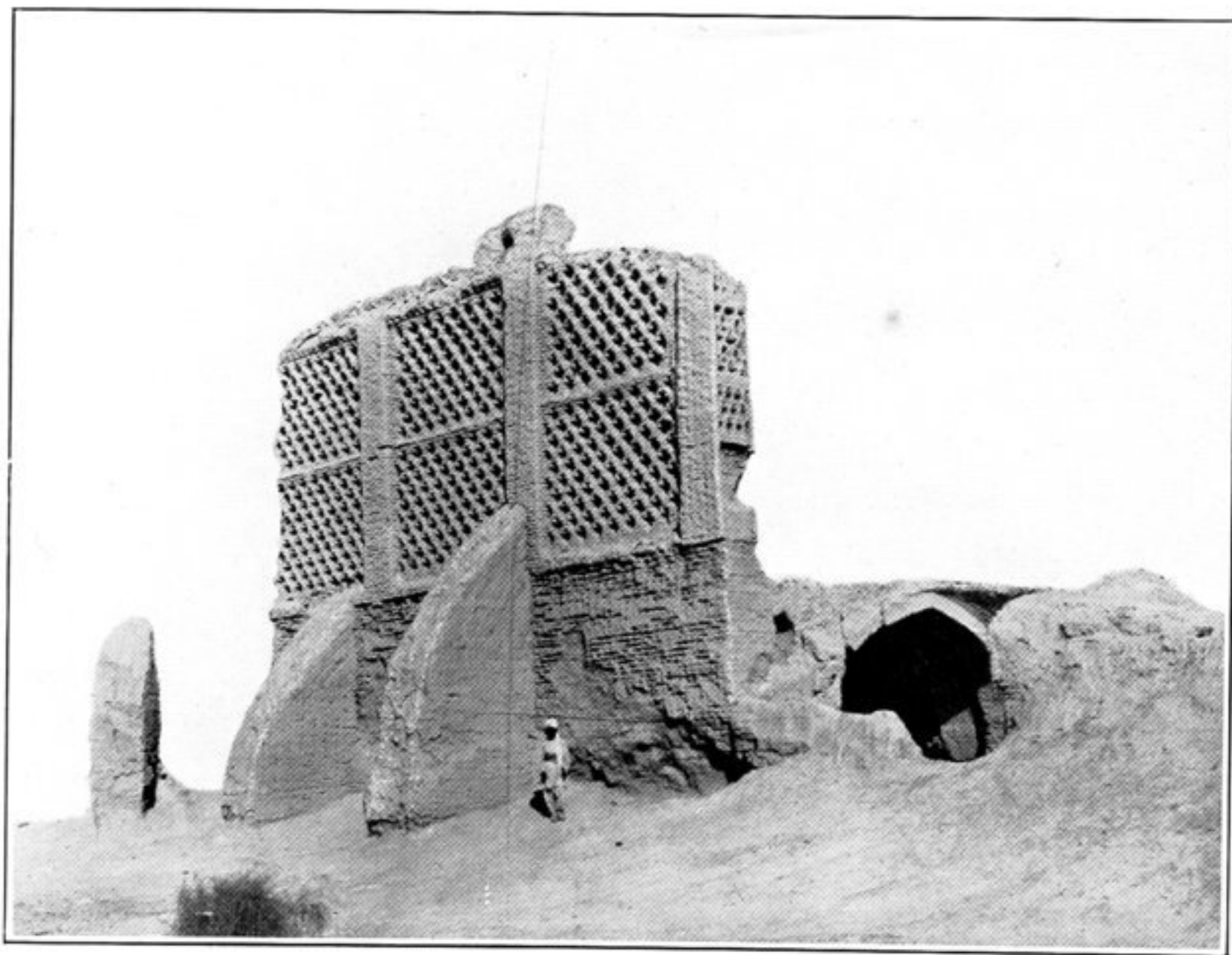
495. MAIN STRUCTURE OF KALA-I-TIMŪR, SEEN FROM NORTH-WEST.



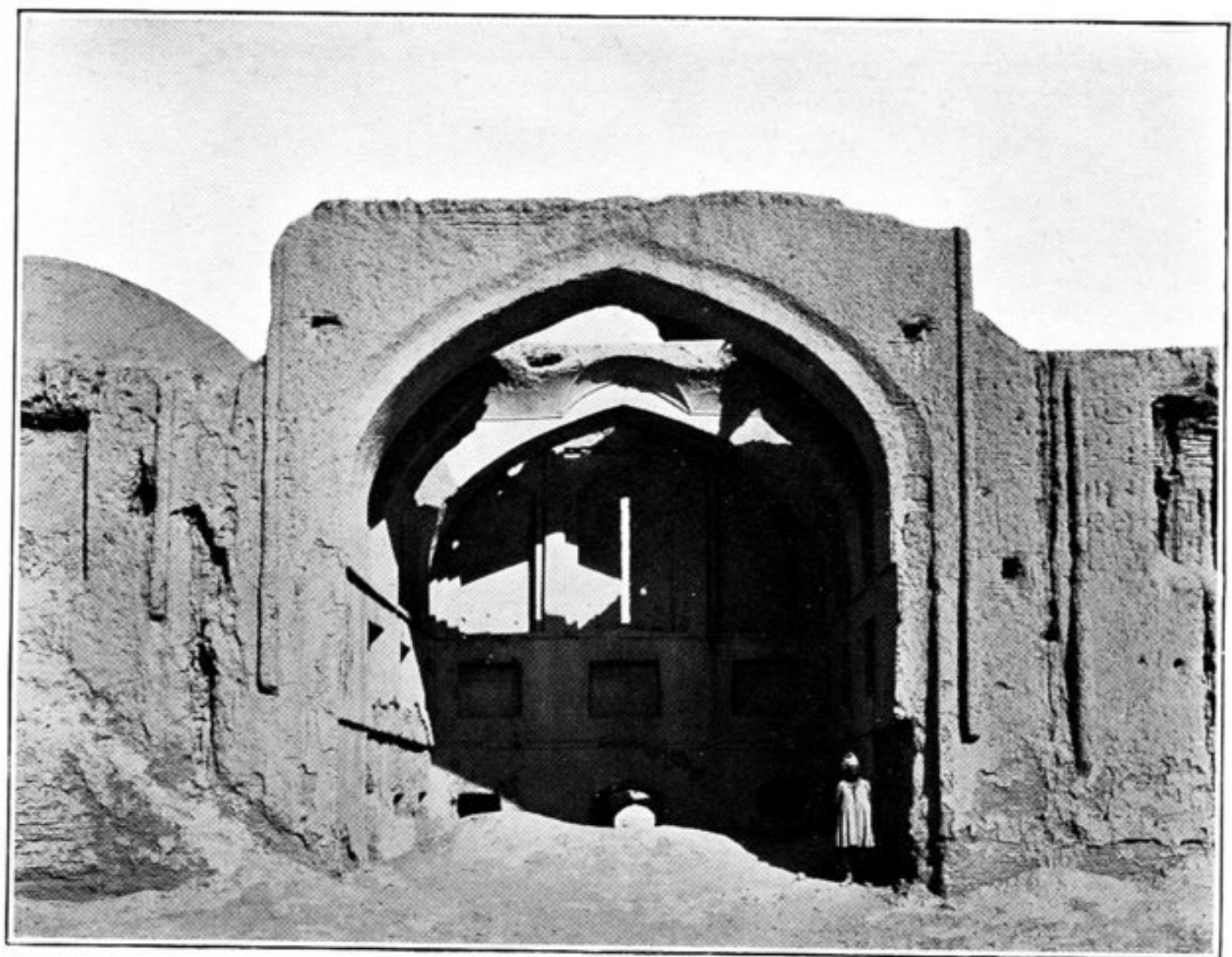
496. RUIN OF MANSION AT BURJ-I-AFGHĀN, SEEN FROM SOUTH.



497. RUIN OF FORTIFIED MANSION AT BĪBĪ-DŌST, SEEN FROM WEST.



498. RUIN OF WINDMILL (CHIGINĪ) NEAR MACHĪ.



499. AIWĀN IN RUIN OF FORTIFIED MANSION, MACHĪ.