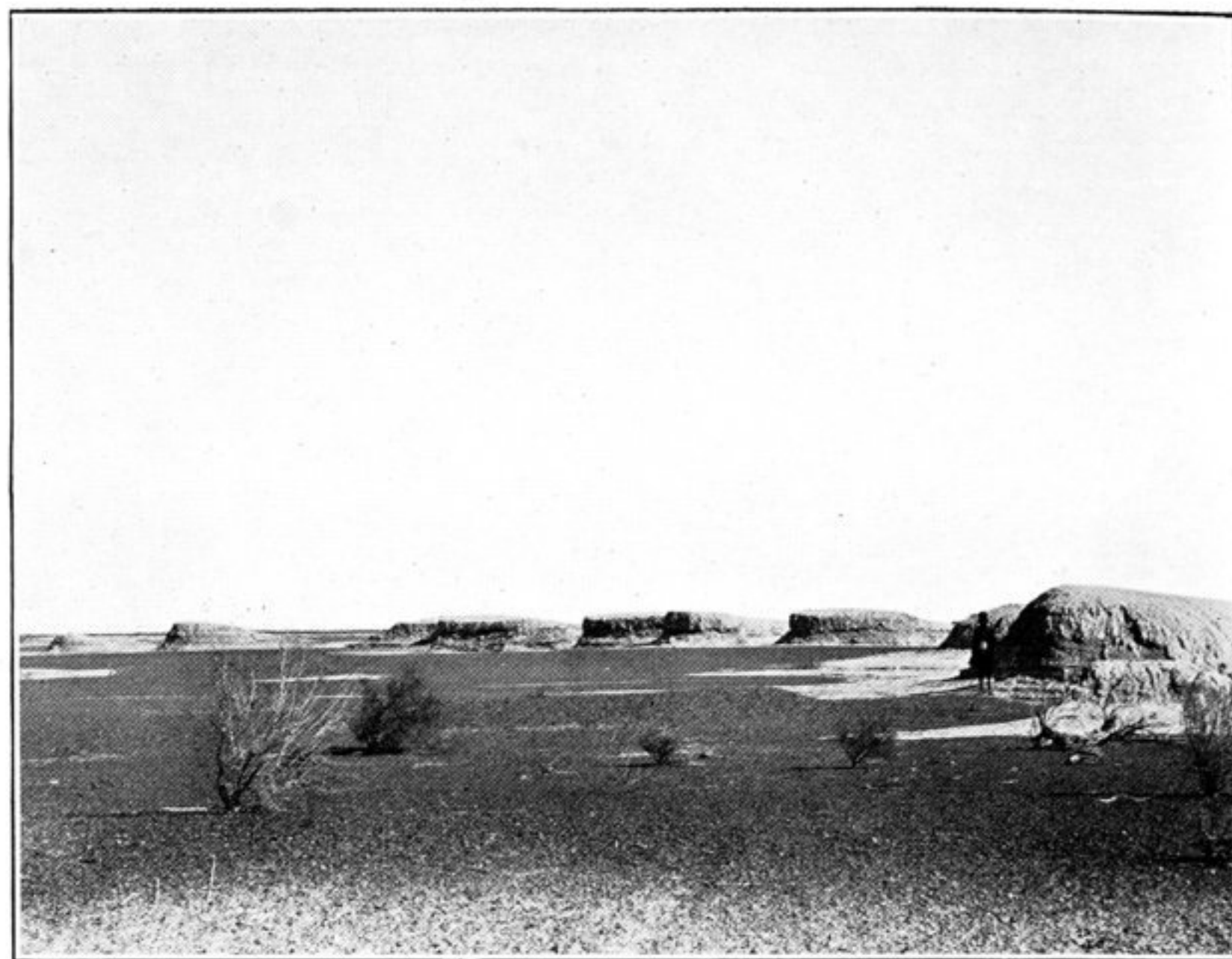
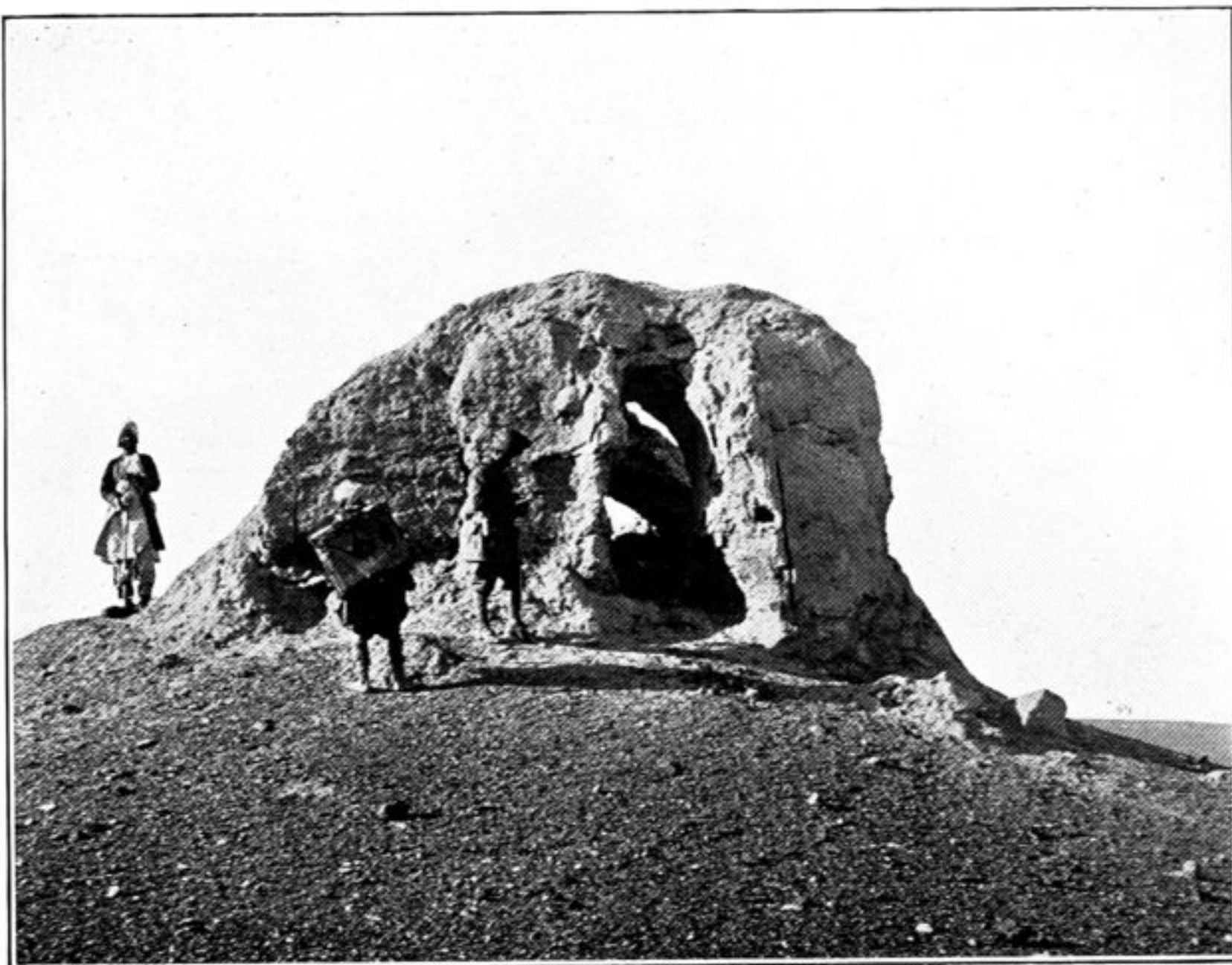


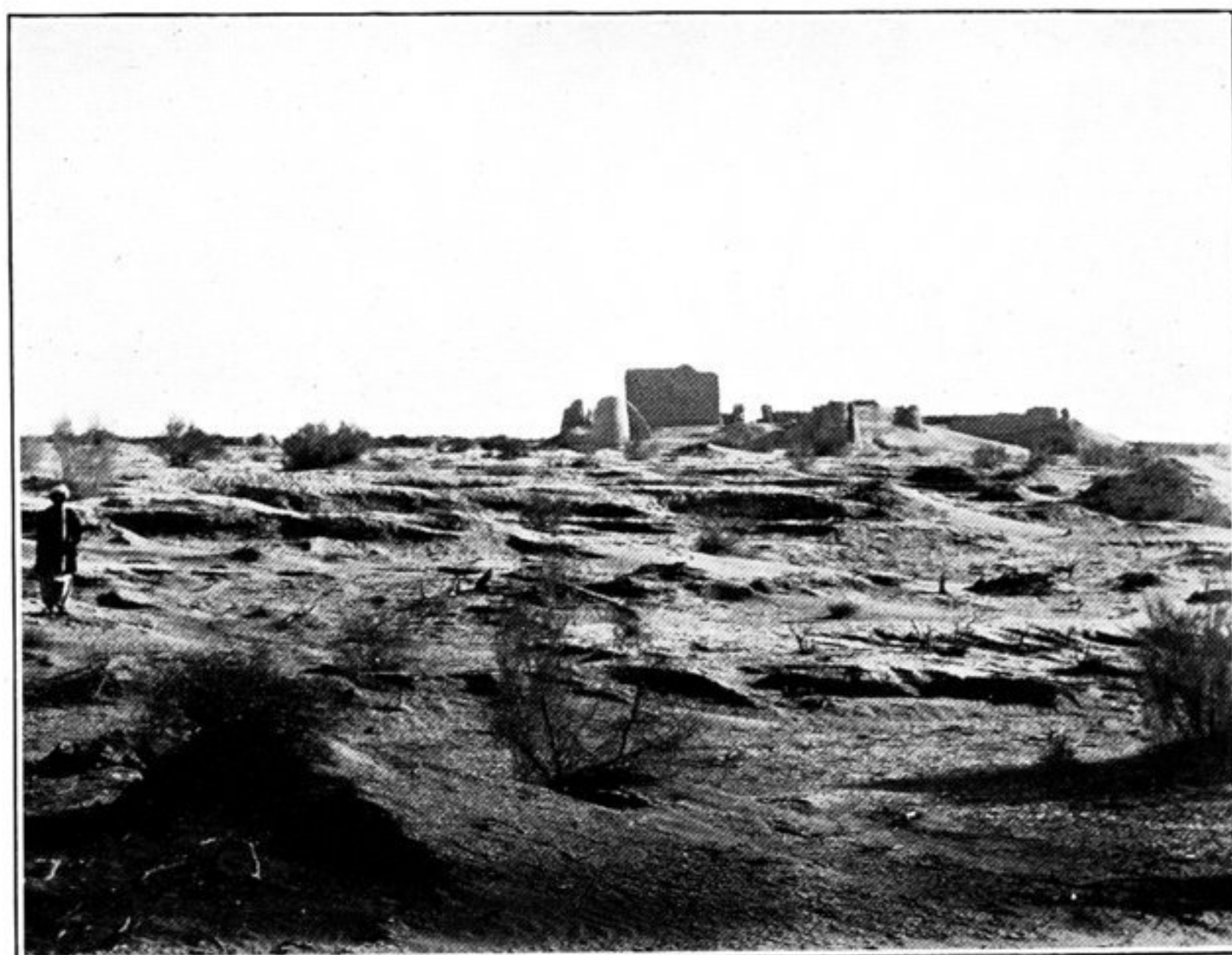
500. WIND-ERODED MOUND, R.R. VII, FIND-PLACE OF PREHISTORIC POTTERY, ETC.



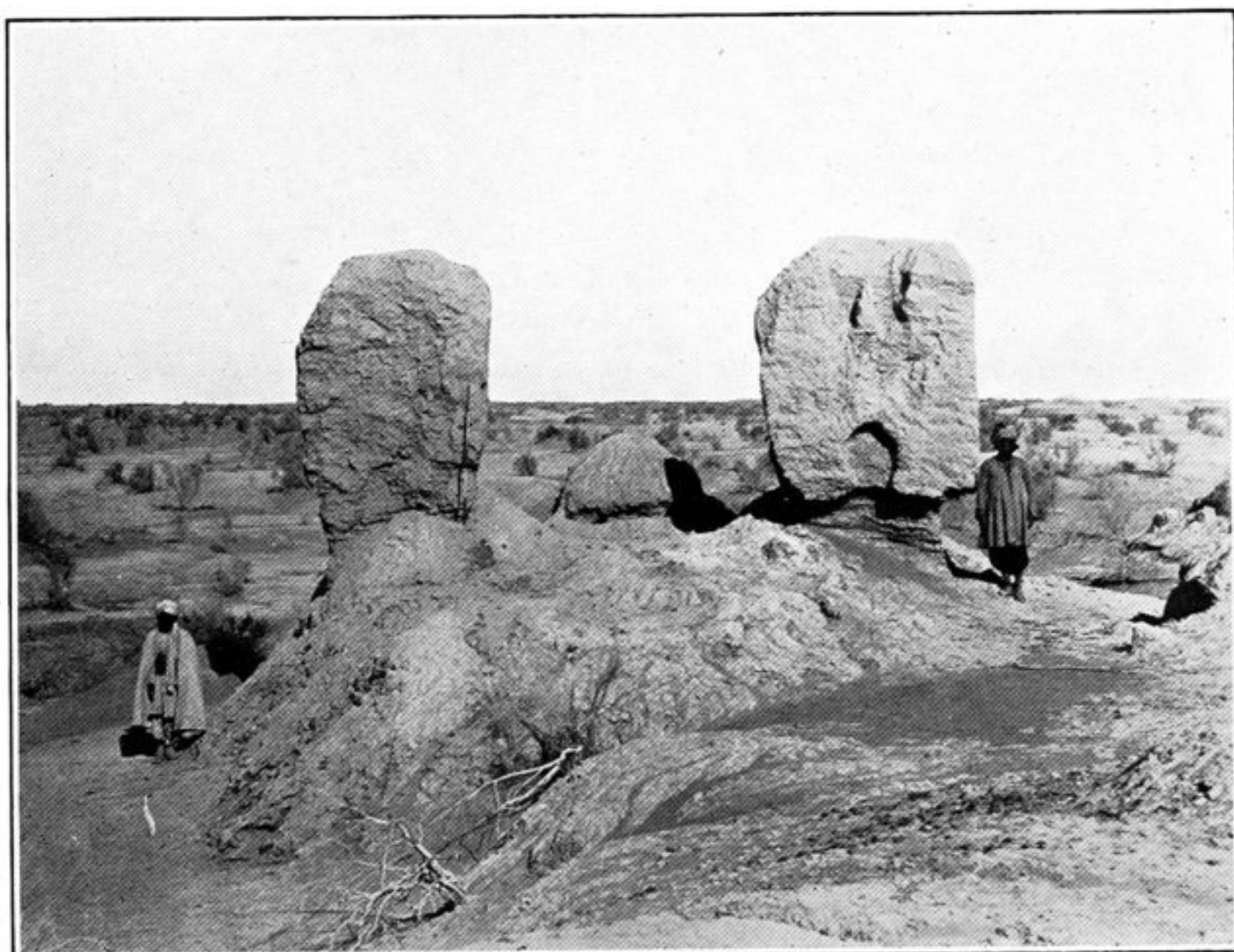
501. WIND-ERODED TERRACES, SALT-ENCRUSTED, NEAR RĀMRŪD, SEEN FROM SOUTH-SOUTH-EAST.



502. RUINED WATCH-POST, R.R. XXV, SEEN FROM SOUTH.



503. WIND-ERODED RIDGES AND TRENCHES WEST OF RĀMRŪD.



504. RUIN OF DOMED TOMB ON WIND-ERODED TERRACE NEAR KALĀT-I-GIRD.



505. MODERN WATCH-POST AT KARŌDAK, ON NUSHKI-SĪSTĀN TRADE ROUTE.