



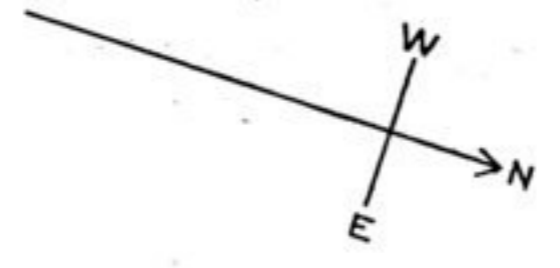
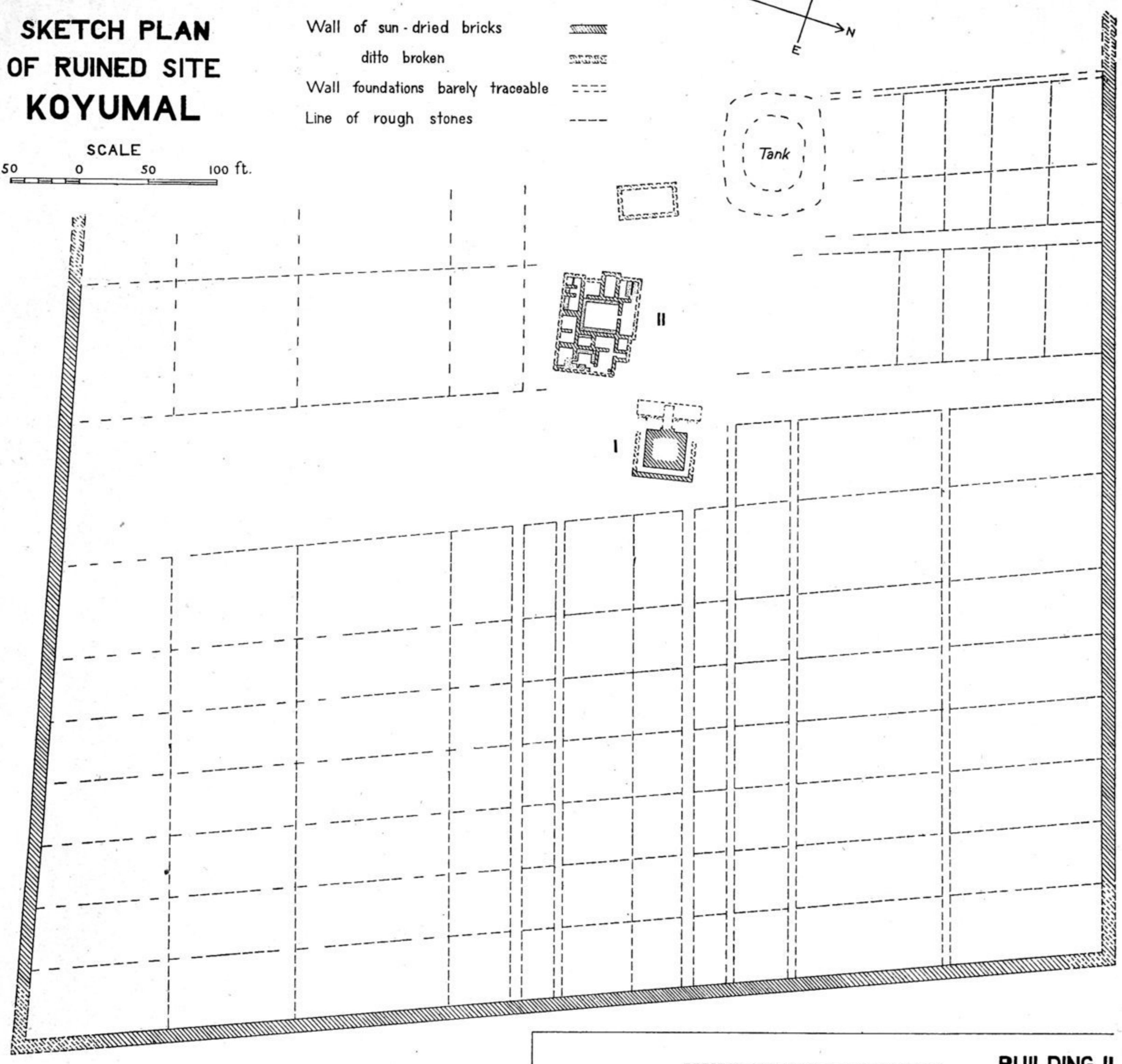


SKETCH PLAN OF RUINED SITE KOYUMAL

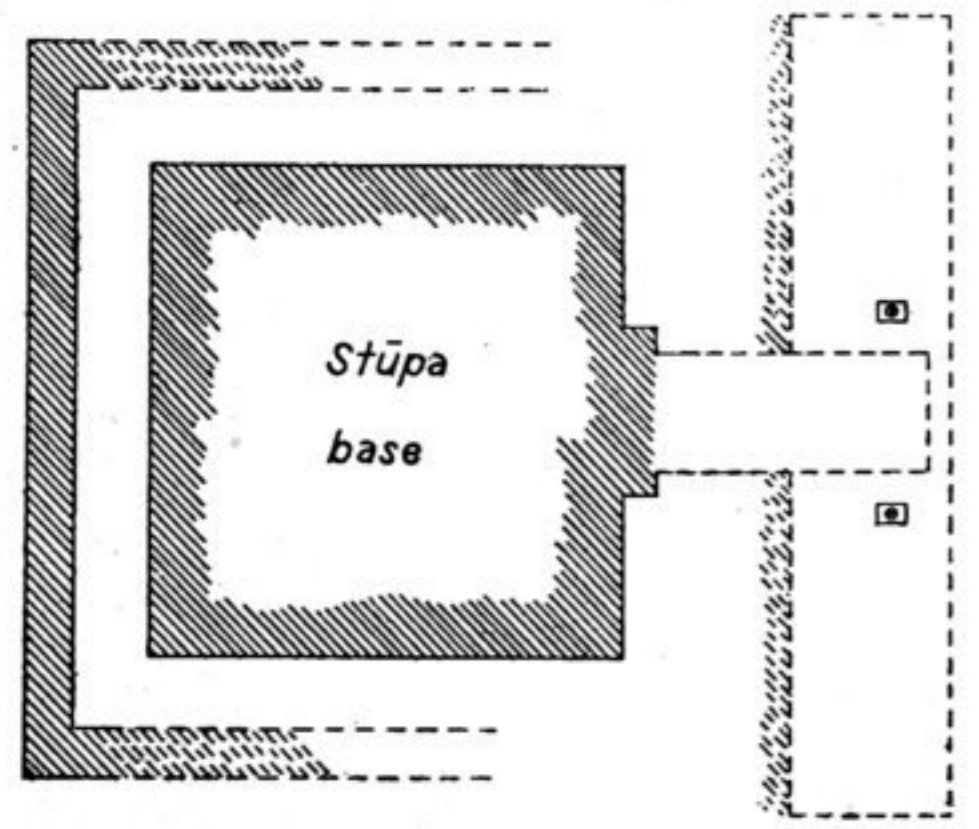
Wall of sun-dried bricks 
 ditto broken 
 Wall foundations barely traceable 
 Line of rough stones 



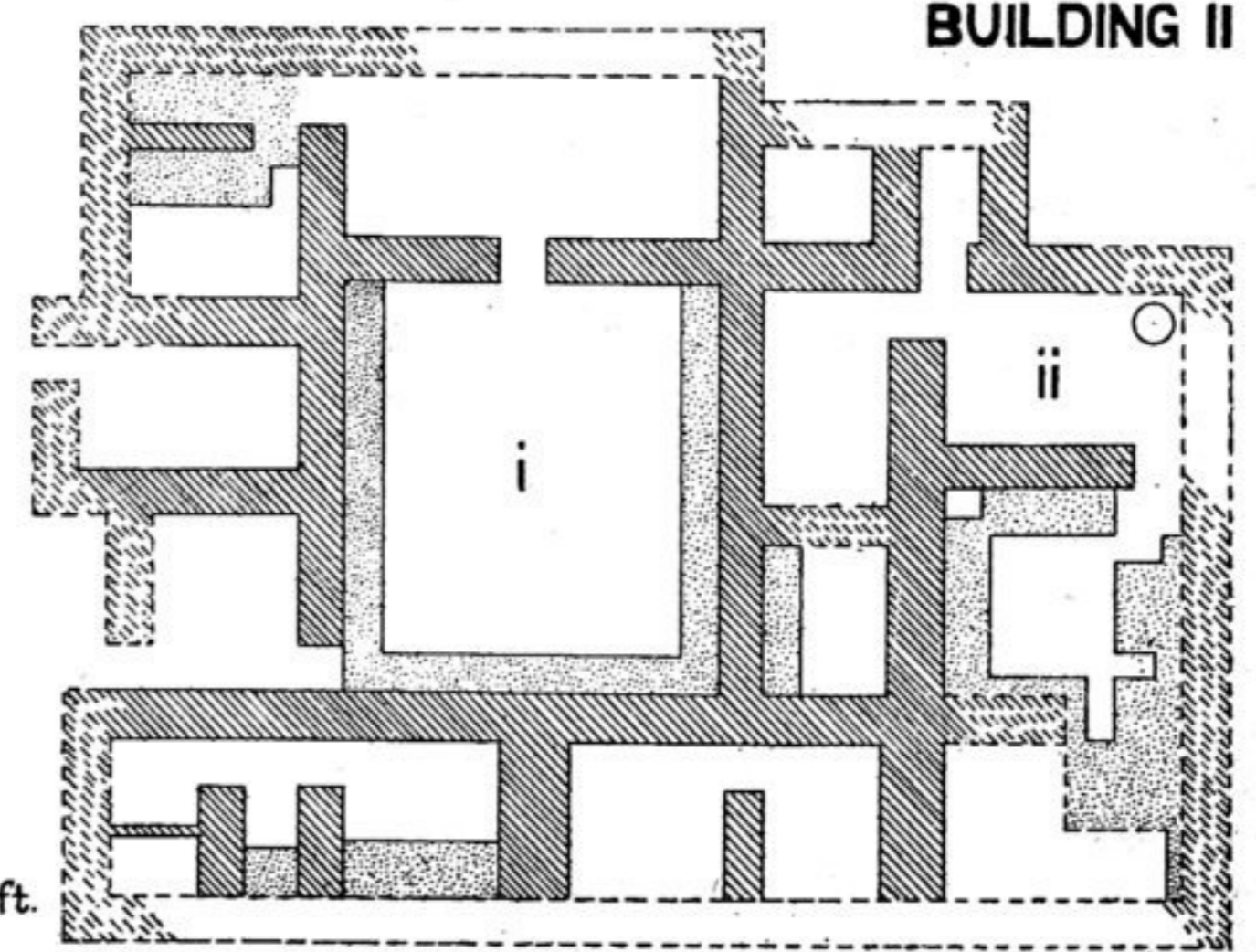
SCALE
 50 0 50 100 ft.



SHRINE I



BUILDING II



SCALE
 12 6 0 12 24 ft.

AFRAZ GUL DEL.