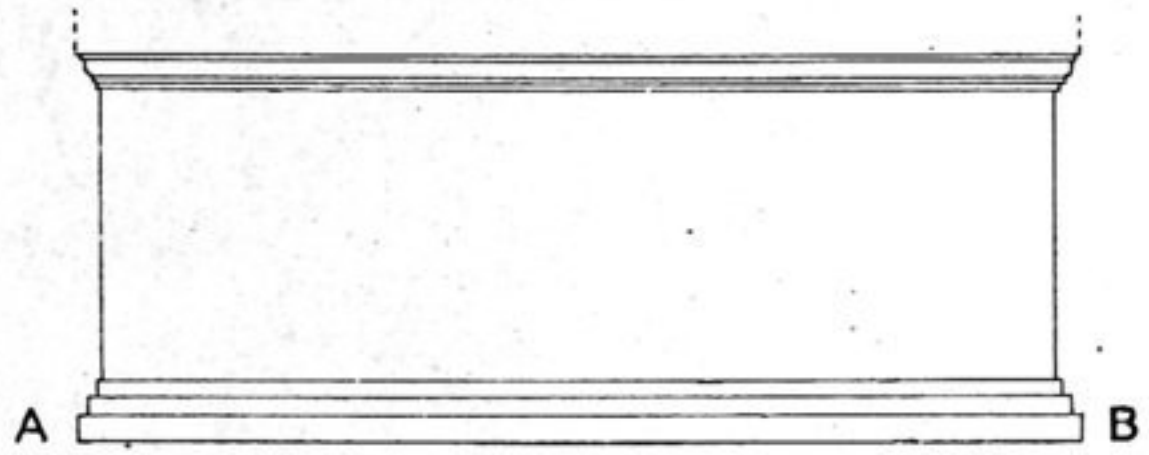
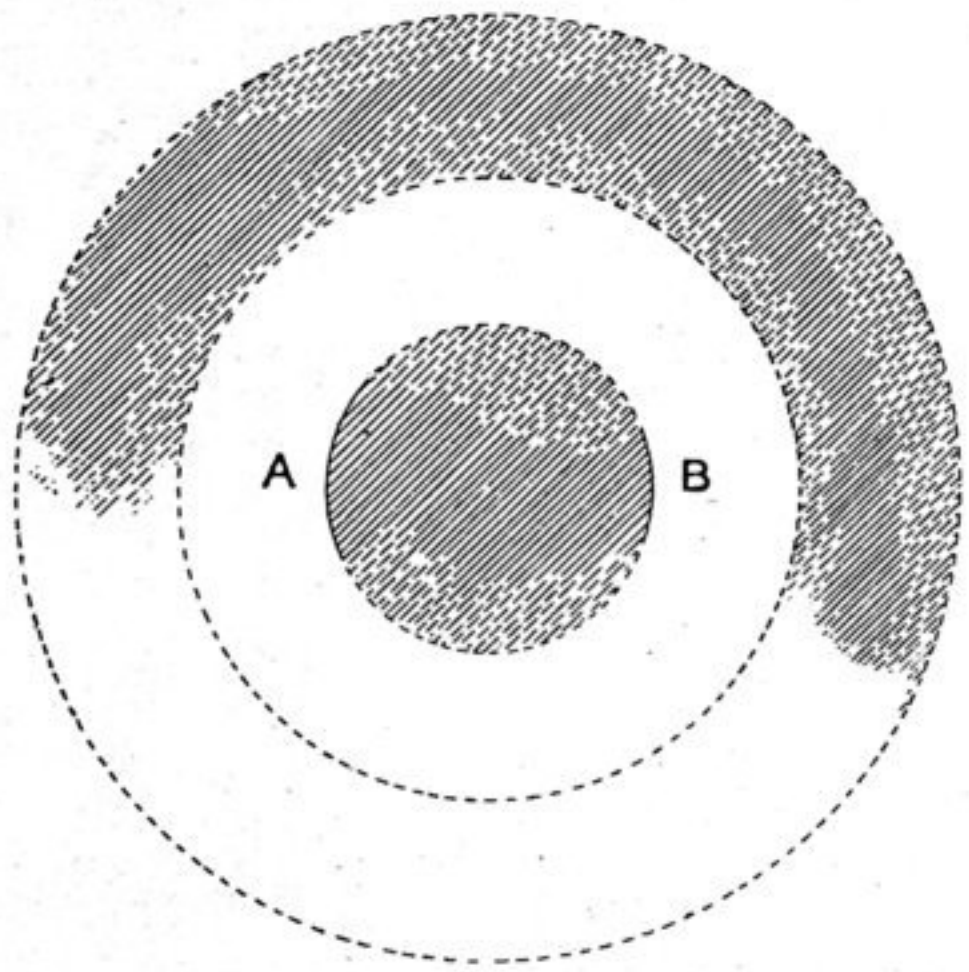


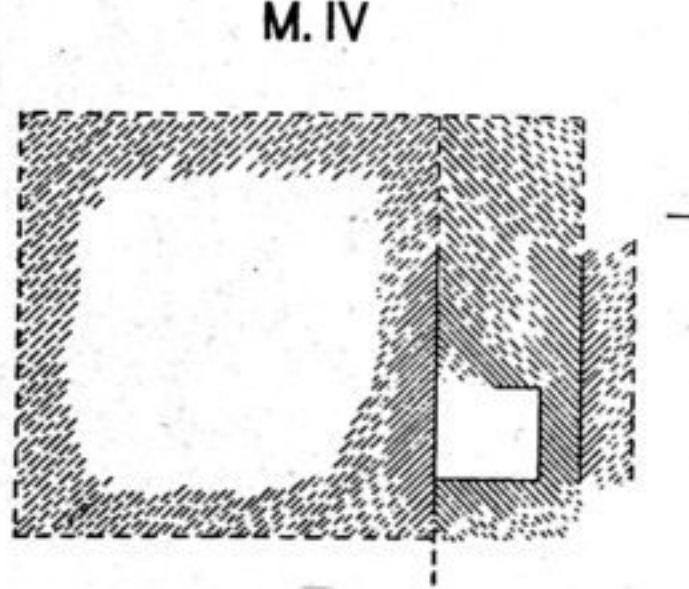
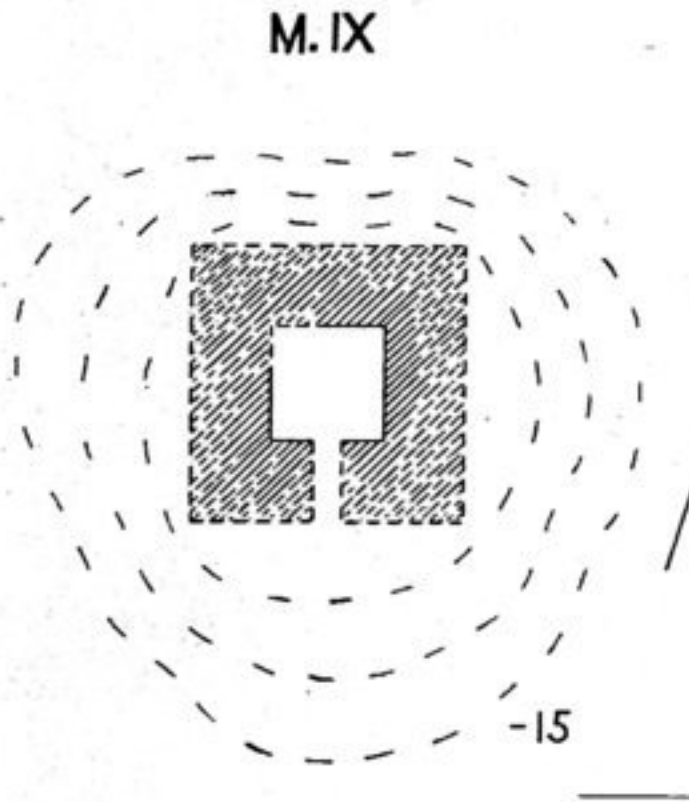
RUINED STRUCTURES OF MĪRĀN SITE



SCALE
2 1 0 2 4 ft.

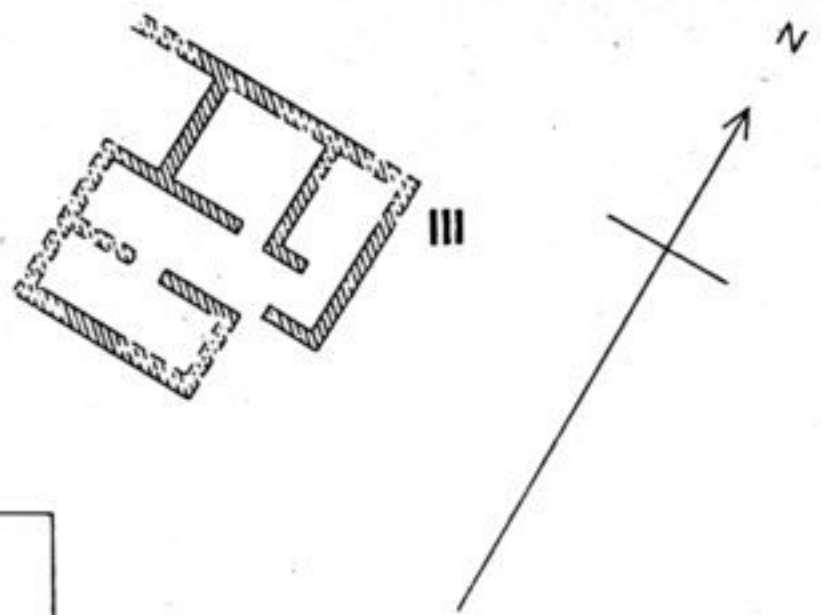


SCALE
6 3 0 6 12 ft.

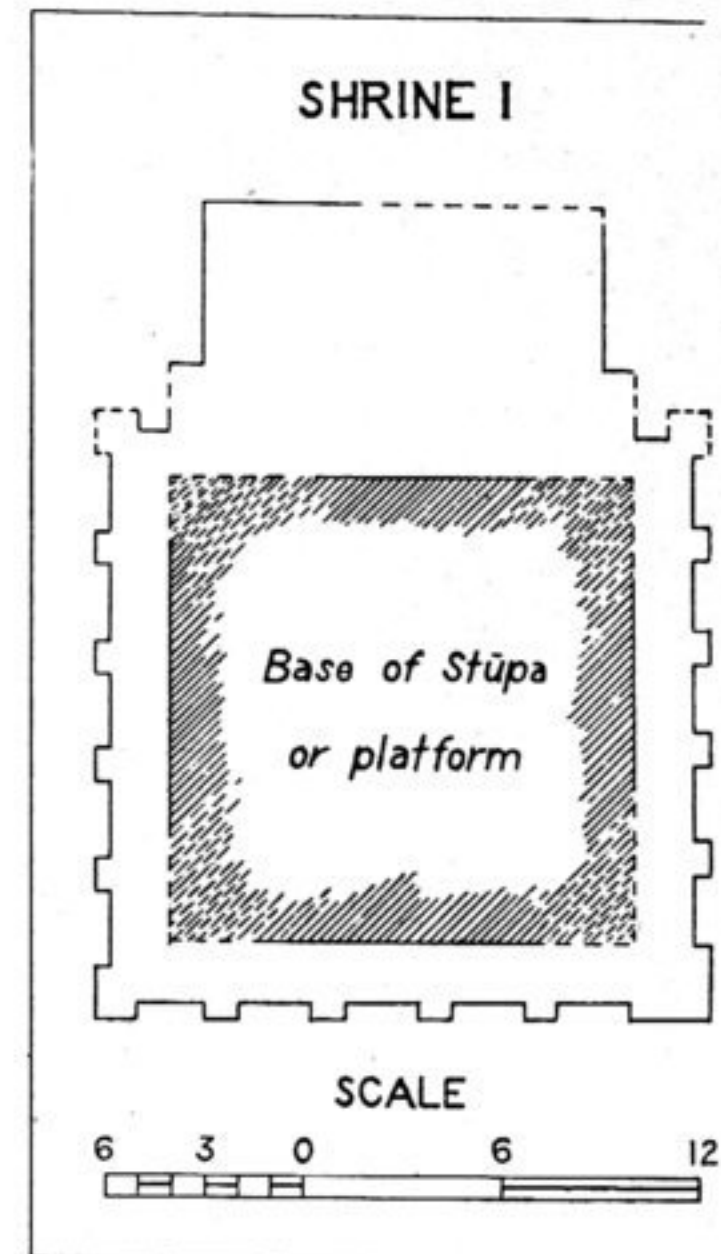


15 10 5 0 15 30 ft.

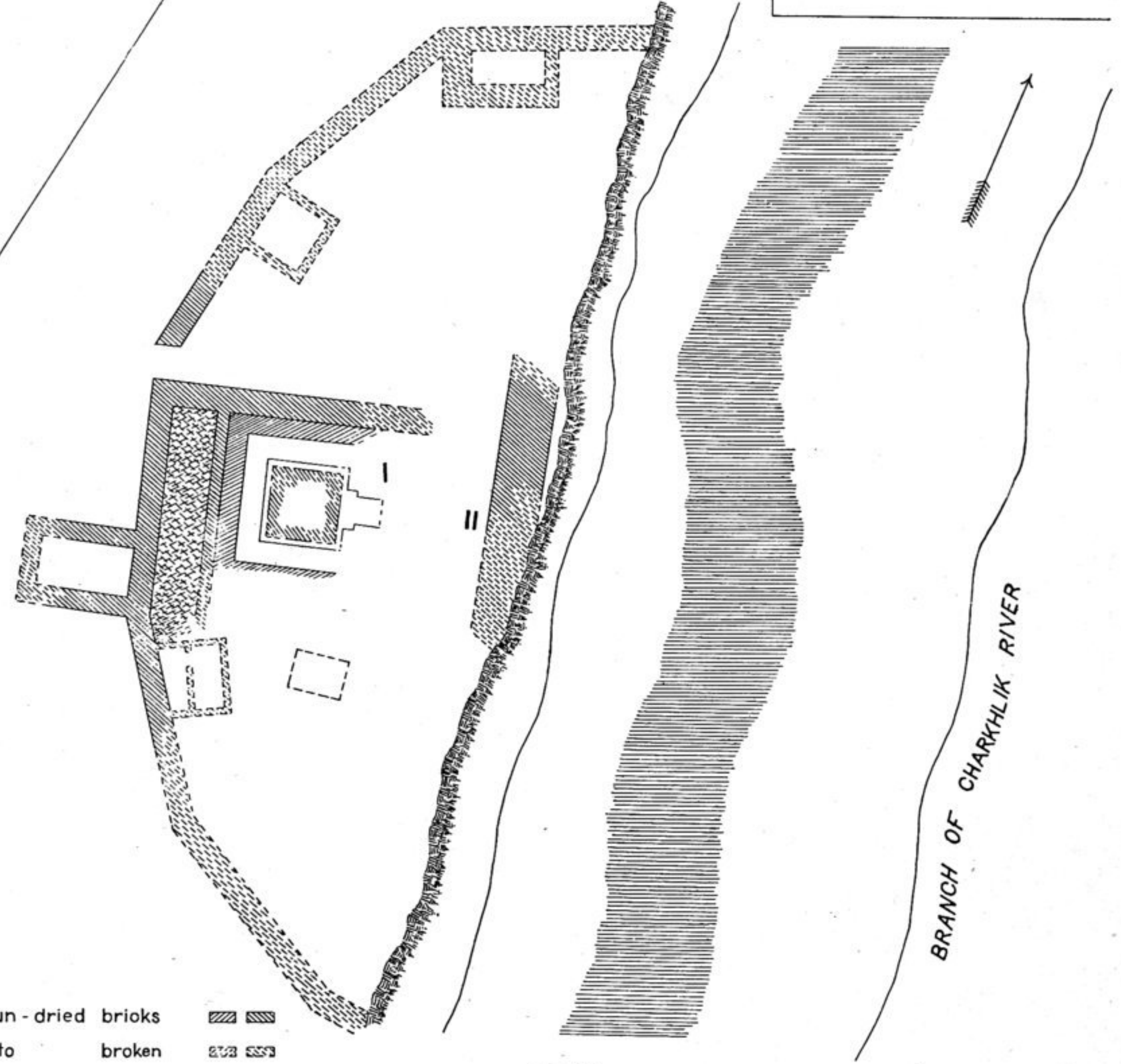
PLAN AND ELEVATION OF RUINED SHRINE M. XIV



SKETCH PLAN OF RUINED SITE BĀSH-KOYUMAL



SCALE
6 3 0 6 12 ft.



SCALE
20 0 20 40 ft.

Wall of sun-dried bricks
ditto broken
Débris of masonry