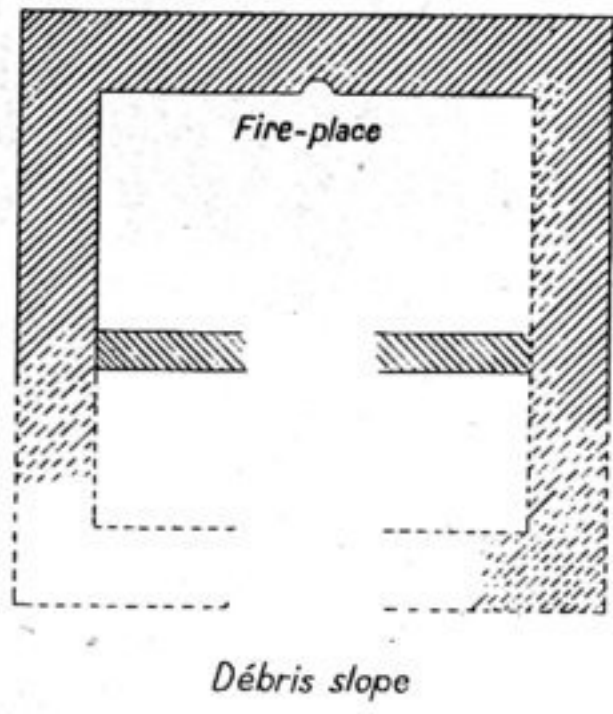
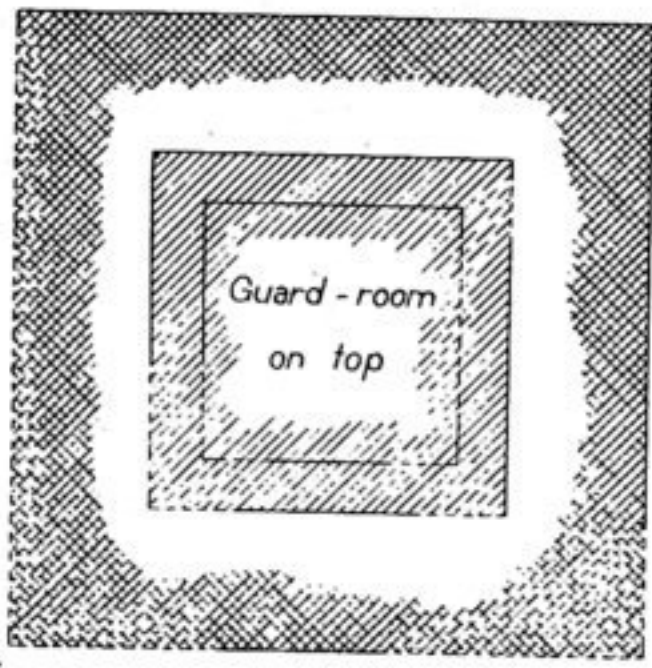


SKETCH PLAN OF TOWER K. VII  
W. OF CHÖL-ĀBĀD

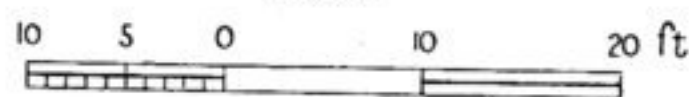


SKETCH PLAN OF TOWER K. V  
CHÖL-ĀBĀD

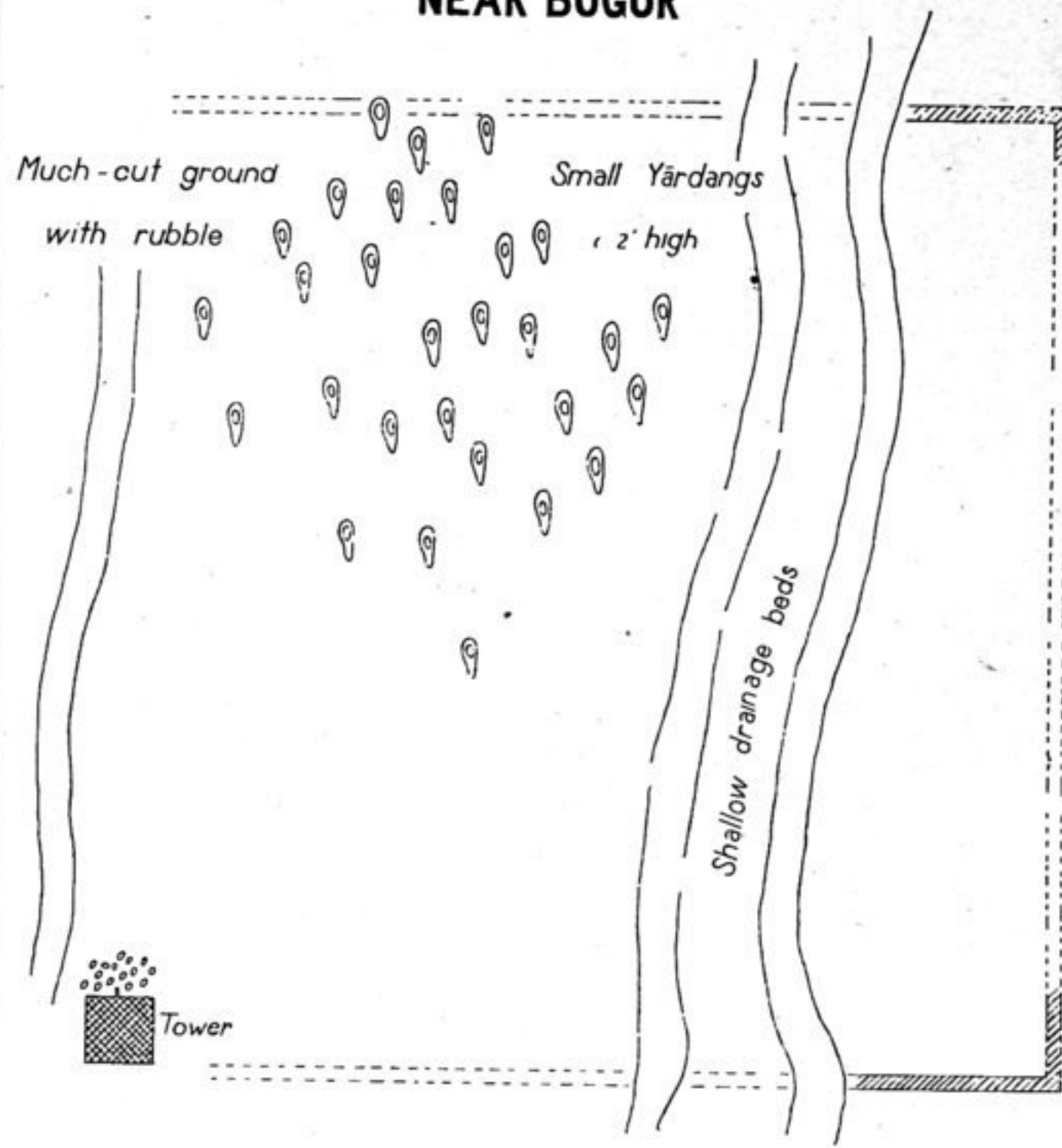


28 Yds. to well

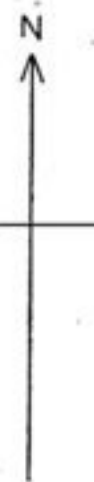
SCALE



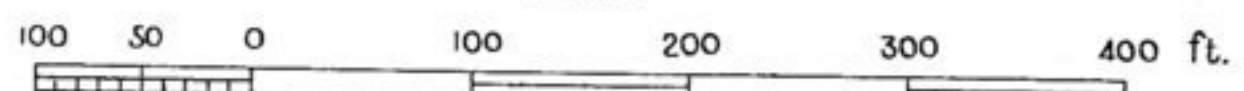
SKETCH PLAN OF RUINS  
AT LAISU  
NEAR BUGUR



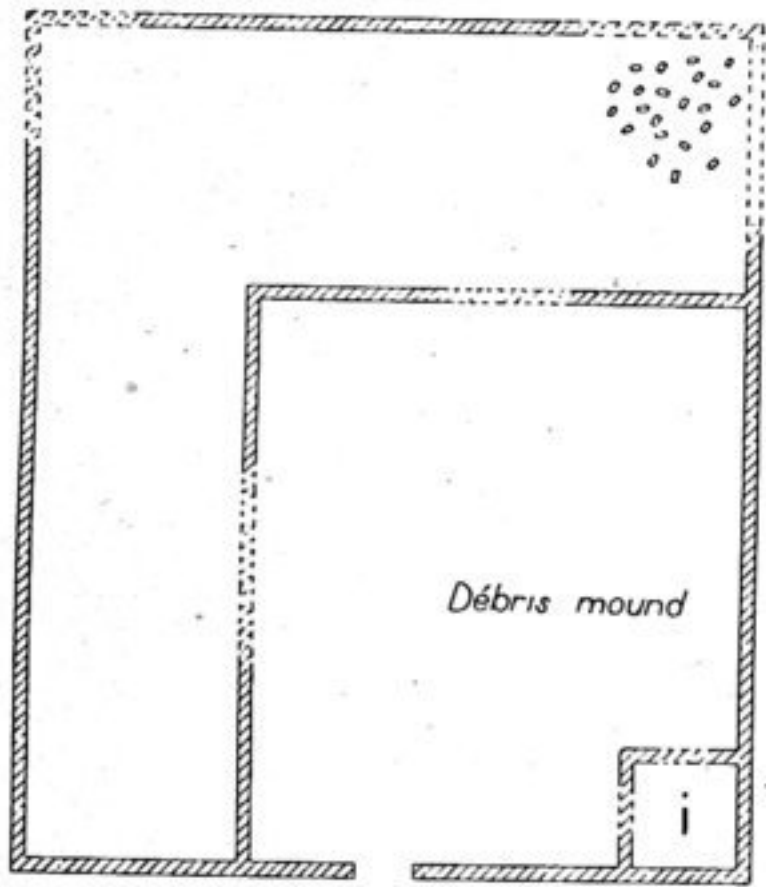
- Masonry of sundried-brick
- Walls barely traceable
- Stamped clay
- Platform of clay
- Refuse
- Yārdang
- Late masonry



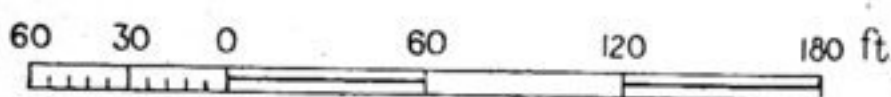
SCALE



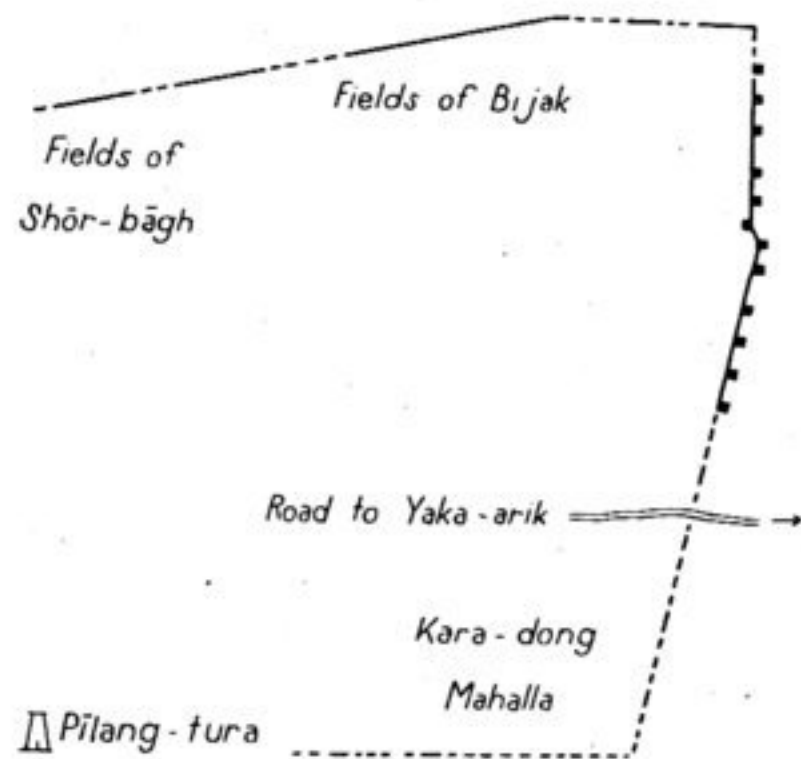
SKETCH PLAN OF  
RUINED POST K. VI  
W. OF CHÖL-ĀBĀD



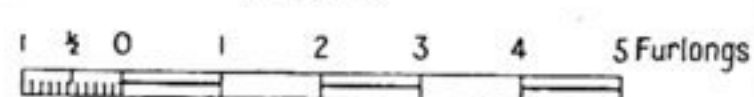
SCALE



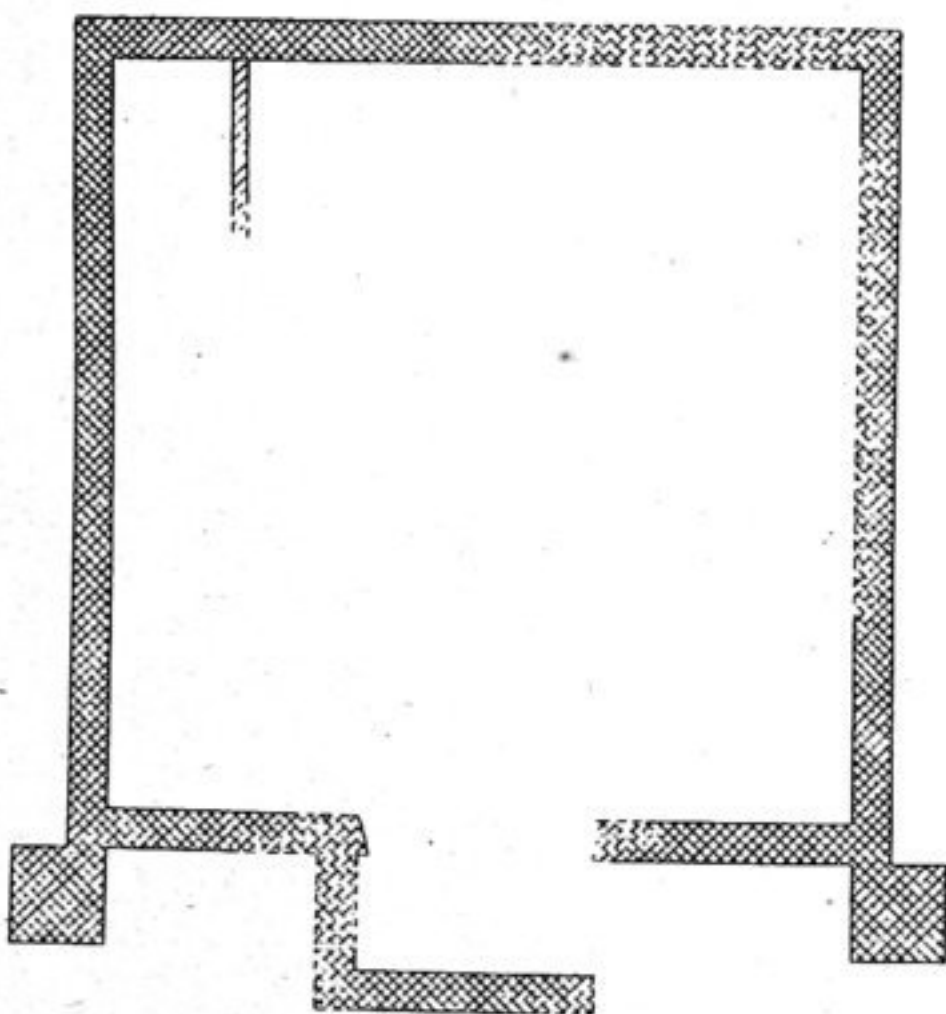
SKETCH PLAN OF  
RUINED CIRCUMVALLATION  
KUCHĀ



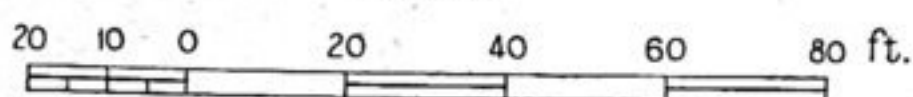
SCALE



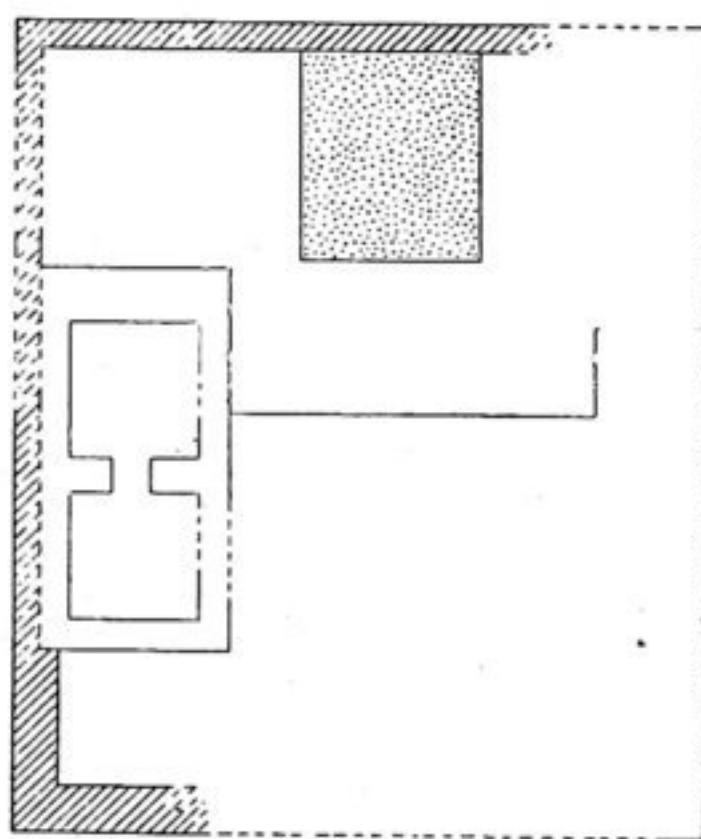
SKETCH PLAN OF FORT K. VIII  
W. OF CHÖL-ĀBĀD



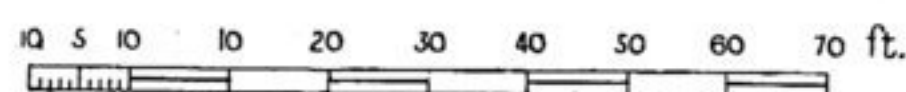
SCALE



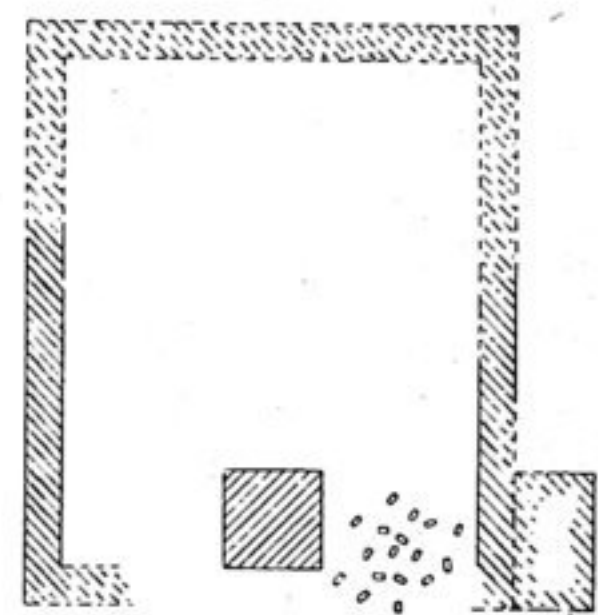
SKETCH PLAN OF  
TOP OF PĪLANG-TURA TOWER  
KUCHĀ



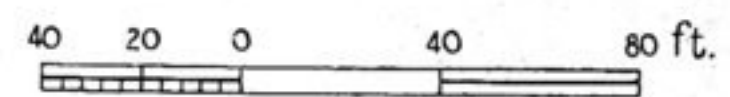
SCALE



SKETCH PLAN OF  
RUINED POST K. IV  
CHUK-TAM



SCALE



A. STEIN & AFRĀZ GUL DEL.