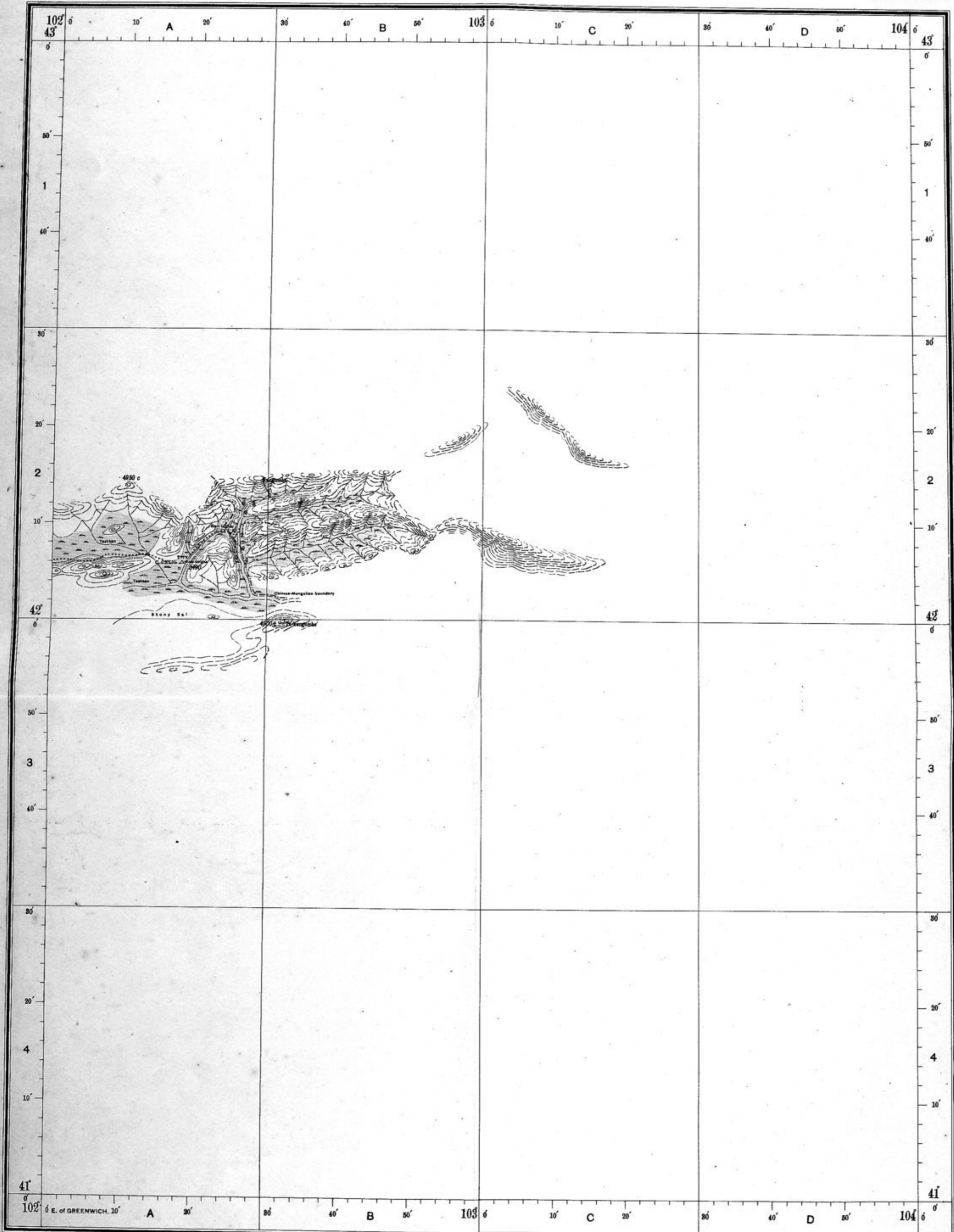


CHINESE TURKISTAN AND KANSU
 FROM SURVEYS MADE DURING THE EXPLORATIONS OF
 SIR AUREL STEIN, K. C. I. E.,
 1900-01, 1906-08, 1913-15.

PART OF SHEET No. N. K-48
 (CARTE INTERNATIONALE DU MONDE)

KUNGURCHE

SERIAL No. 47



- Latitude Stn. Azimuth Stn. Triangulation Stn. ...
- Heights: by theodolite; by clinometer..... 18277 12300 c
- Heights: by barometer or hypsometer..... 12770
- Perpetual snow (approximate).....
- Drift-sand area.....
- Erosion terraces: Mesa; Yárdang.....
- Hard salt crust.....
- Hard salt-encrusted clay.....
- Soft salt-encrusted clay.....
- Cultivation: unsurveyed.....
- Edges of cultivation, etc., where surveyed.....
- Reeds or low scrub: living; dead.....
- Bandy tract with scrub or jungle.....
- Tamarisk cones: living; dead.....
- Wild poplars (Tohraka): living; dead.....
- Tamarisks: living; dead. Conifers.....

Index to localities



Published under the direction of Colonel C. H. D. Ryder, C.I.E., D.S.O., R.E., Surveyor General of India, 1919.

Scale 1: 500,000 or 1:014 inches to 8 Miles

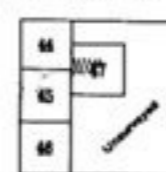


EXPLANATION OF SOME TURKI AND CHINESE TERMS

Bulak..... Spring	Kul, Kúl..... Lake	P'ao-tzu, Pu-tzu..... Walled village (Chin.)
Chap..... Hill stream	Kum..... Sand	Sal..... Desert of stone or gravel (Chin.)
Darya..... River	Kumush..... Reeds	Shan (Chin.)..... Mountain
Dawán..... Pass	Kurghan..... Tower	Ta-fan (Chin.)..... Pass
Dong..... Hill	Langer, Lc..... Rest house	Tagh..... Mountain
Ho (Chin.)..... River	Mazár, Mc..... Saint's tomb	Taghak..... Poplar
Jilga, J..... Valley	Miao (Chin.)..... Temple	Üstang..... Canal
Karaul..... Watch station	Óghil..... Shepherd station	Yalák, Yalagh..... Grazing ground

Streams etc. which generally contain water are shown in blue

Index to adjoining sheets



- Spring. Well. Kár-íz.....
- Main road.....
- Other roads and paths with pass.....
- Telegraph line.....
- Temple. Muhammadan shrine. Sacred tomb.....
- Fort: ancient; recent. Mine.....
- Temporarily occupied hut.....
- Frontier wall: ancient; recent.....
- Walled town: extant; ruined. Ruined mound (Stüpa).....
- Ancient site; watch-tower. Cairn.....
- Route with camp, 1900-01.....
- Route with camp, 1906-08.....
- Route with camp, 1913-15.....
- Camps of Sir A. Stein or Md. Yaküb Khán in 1913-15.....
- Camps of Sir A. Stein and Atház Gul in 1913-15.....
- Camps of R. B. Lái Singh in 1913-15.....