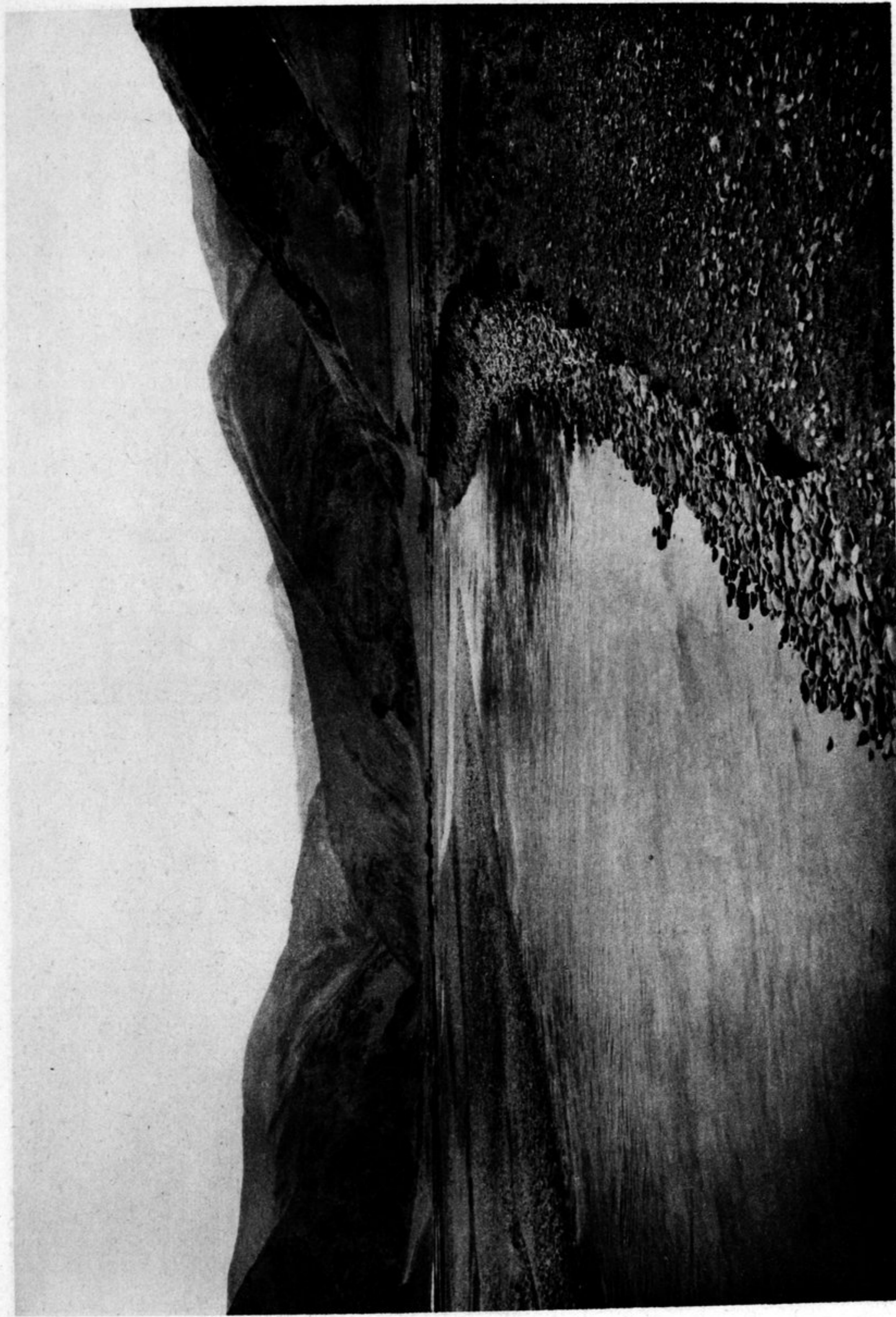


VOL. VII.



THE CONFLUENCE OF BUP-CHU AND MÜ-CHU AT LINGA. THE MÜ-CHU BRIDGE. IN THE BACKGROUND THE UPPER PART OF THE MÜ-CHU VALLEY. LOOKING NORTH FROM A POINT JUST BELOW CAMP 142.