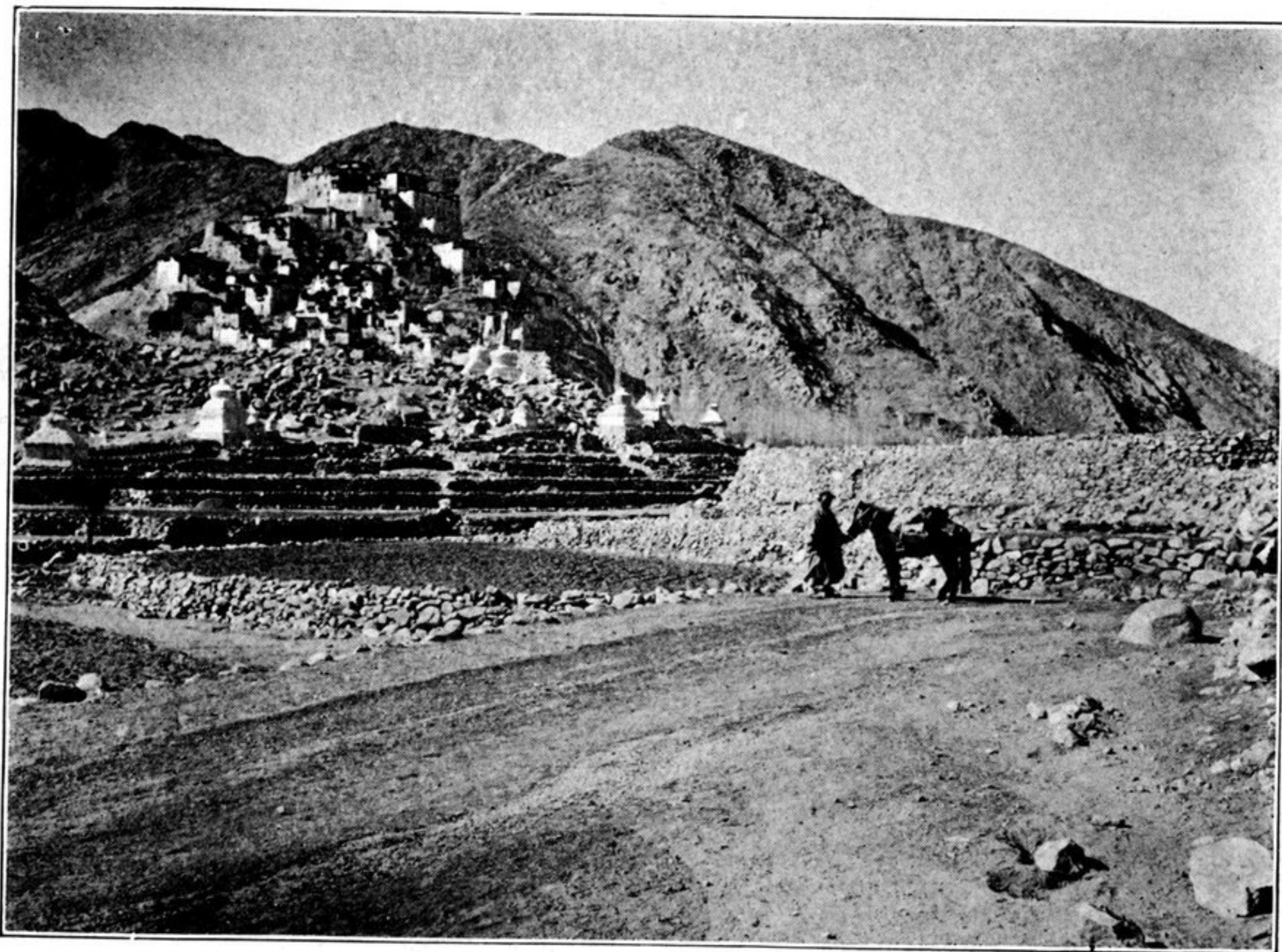


THE TOP OF A HOUSE STILL BURIED IN
SNOW IN APRIL, NEAR ZOJI LA

The cow stands in the pit-like entrance to the house



THE LAMASERY OF CHIMRAY, AND ITS FIELDS ON TERRACES BUILT
OF ROCKS, AT AN ELEVATION OF OVER 12,000 FEET, NEAR
THE PASS OF CHANG LA