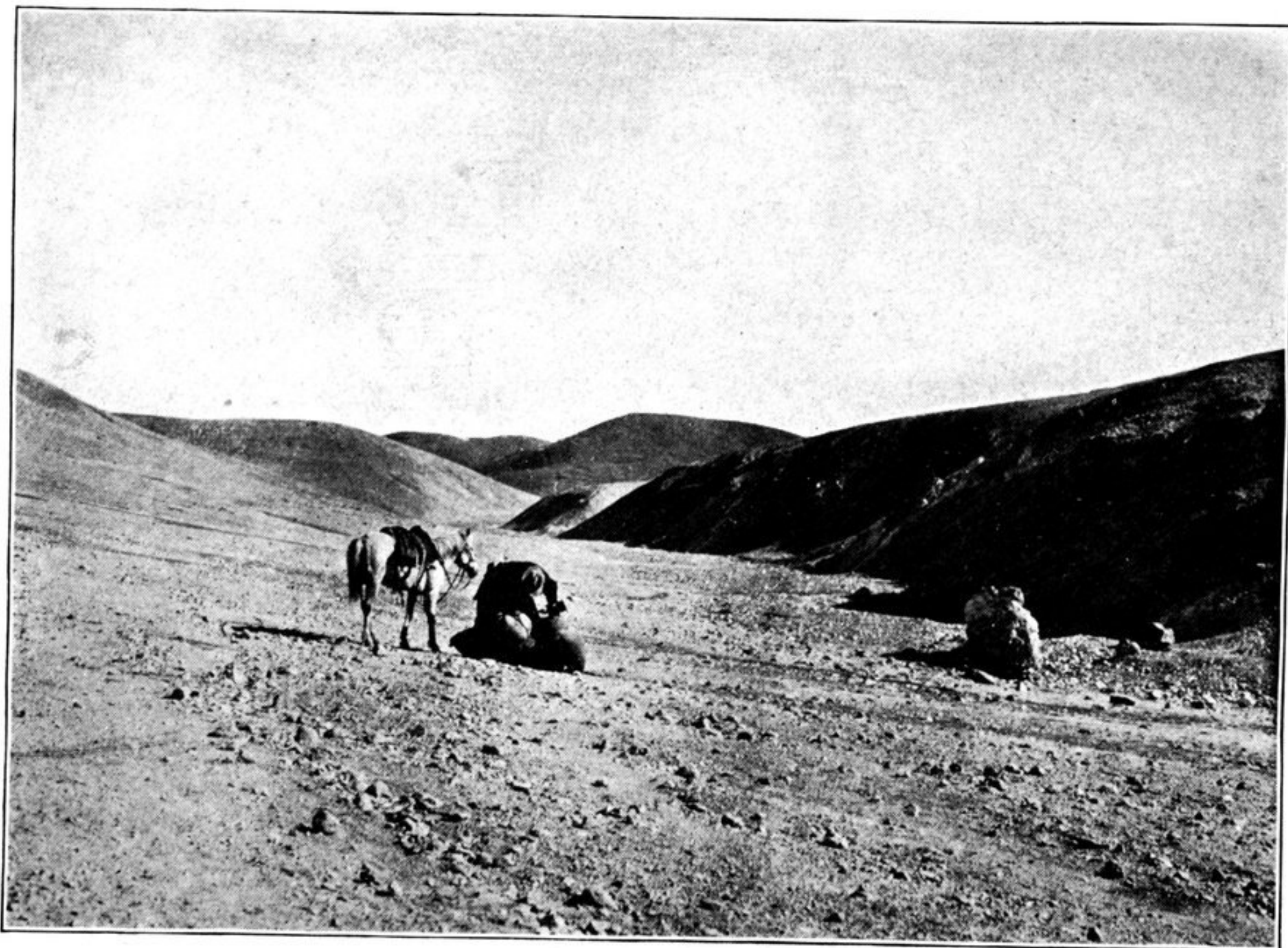




VIEW TO THE SOUTHWEST FROM AN ELEVATION OF 16,500 FEET,
NEAR CHANG LA, ACROSS THE INDUS RIVER TO THE FLAT-
TOPPED MIDDLE RANGE OF THE HIMALAYAS

The coolies are loaded with firewood



THE BORDER OF THE DEPSANG PLAIN, SHOWING THE SUBDUED
TOPOGRAPHY OF THE CENTRAL PART OF THE
KARAKORUM PLATEAU

In the foreground are two bags abandoned by a caravan in disaster