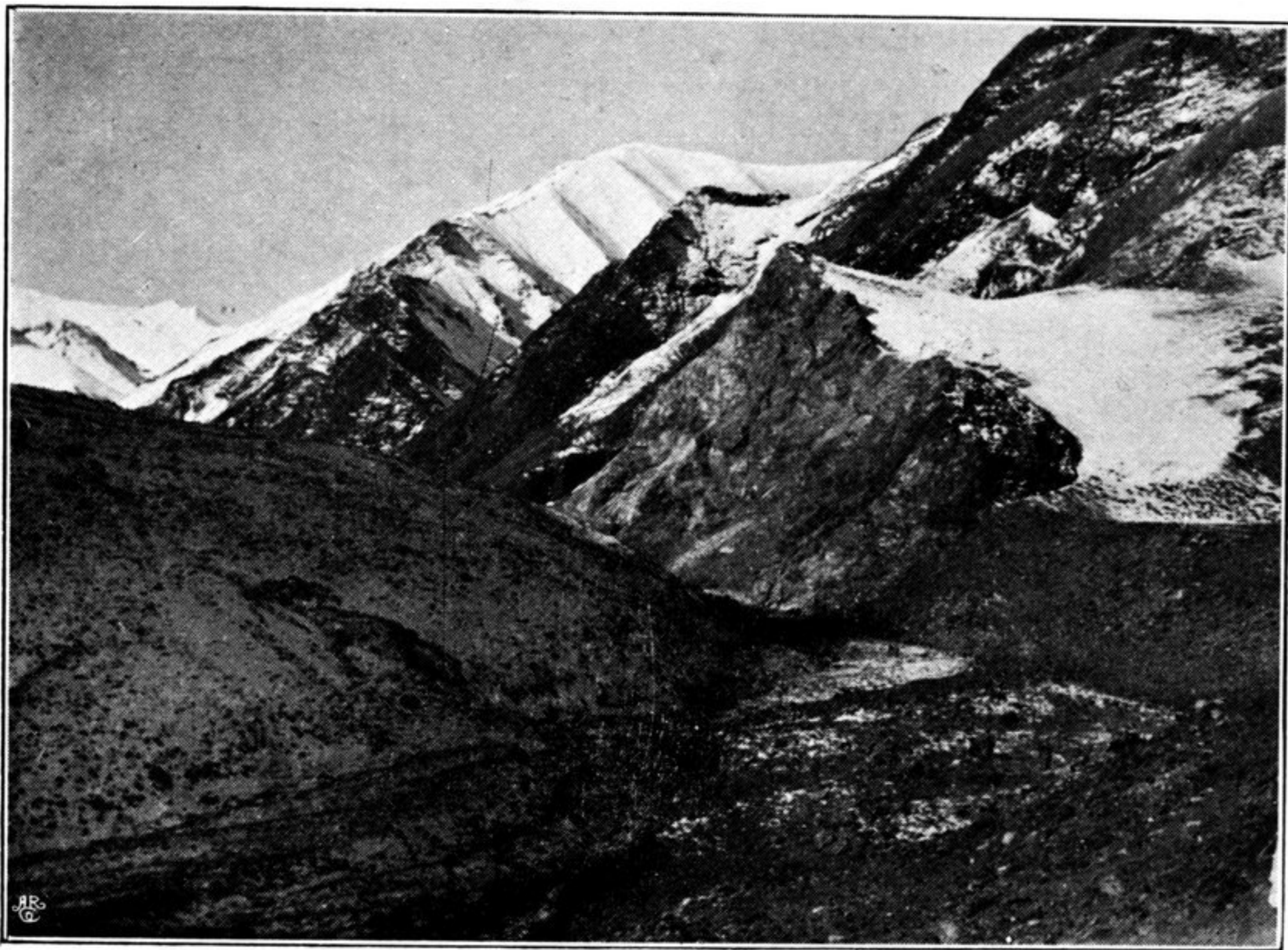


about 18,000 feet, this instrument was valueless. Nearly all aneroids record too small a barometric pressure at great heights: their errors increase with the height, and at great heights no two instruments even by the same maker, when placed under the same conditions, record the same pressure. Their errors can only be detected by comparison with the mercurial barometer, or hypsometer on the spot. As a rule, our aneroid was compared



WATERLESS CAMP NEAR THE AN LA (PASS).

morning and evening with Collie's portable mercurial barometer, but we never used the latter instrument at passes, only in camp.

The Nabo La was undoubtedly the highest point the caravan had reached, but few of us were seriously affected. Leno, Tara Singh, and two Argûns complained of headaches, and Sanman's face and hands became swollen. All of us had to make frequent halts for a minute or two