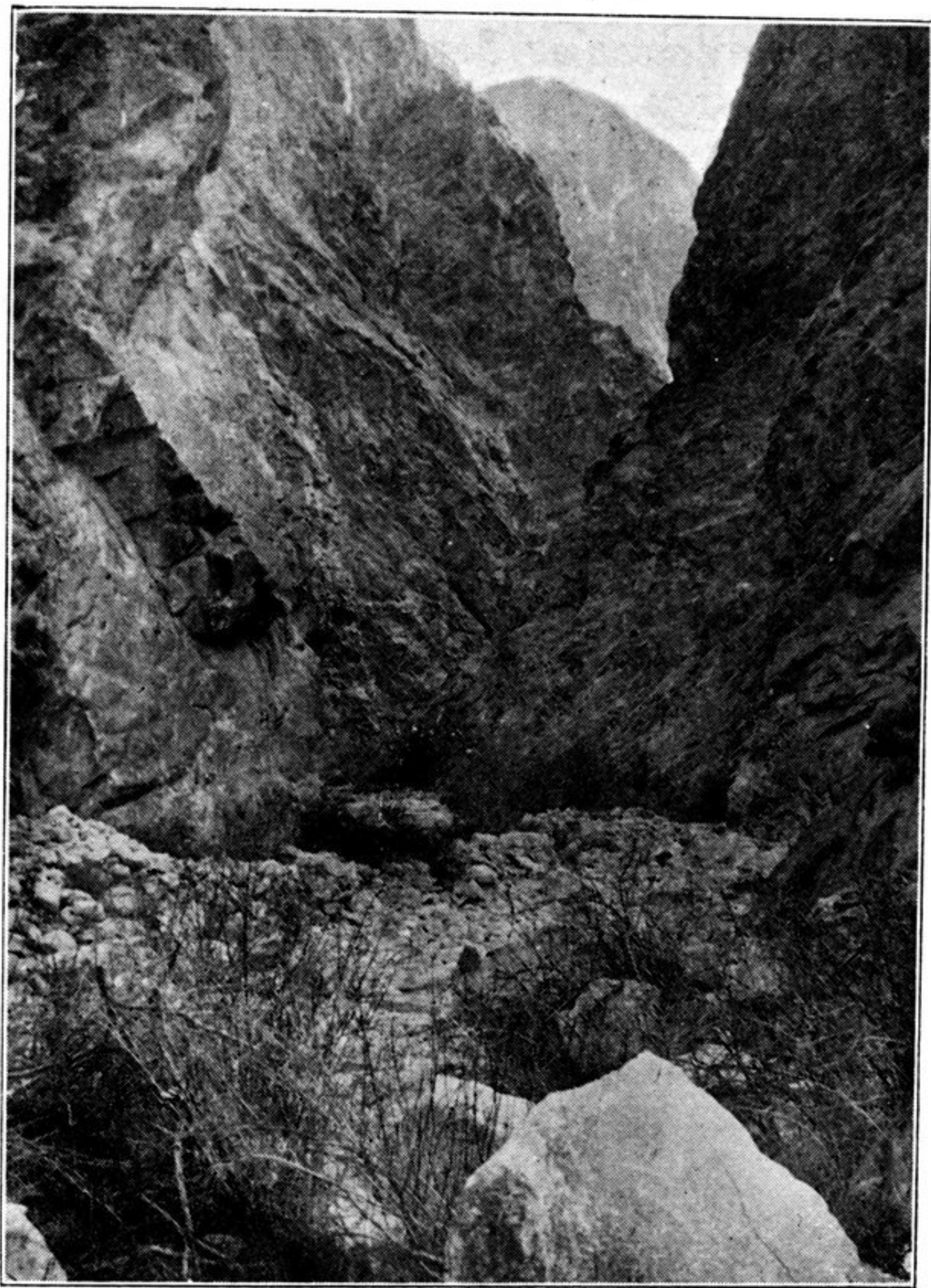


to one burdened with a large theodolite, and I had to content myself with those on the right bank which, though not so steep, were too low to afford a view of the peaks fixed from the neighbourhood of Mazar Sultan.

The tract known as Raskam, is that portion of the



SCENE IN VALLEY OF THE TALDE KOL SU.

valley of the Yarkand River stretching from Bazar Dara, a small fort at the mouth of the Dozak Dara Su, westwards to the point where the river turns sharply to the north. The uninhabited valley is bounded by steep and lofty mountains, utterly barren, and with the exception of the Miskan Jilga, a small valley to the north of Topa Dawan,