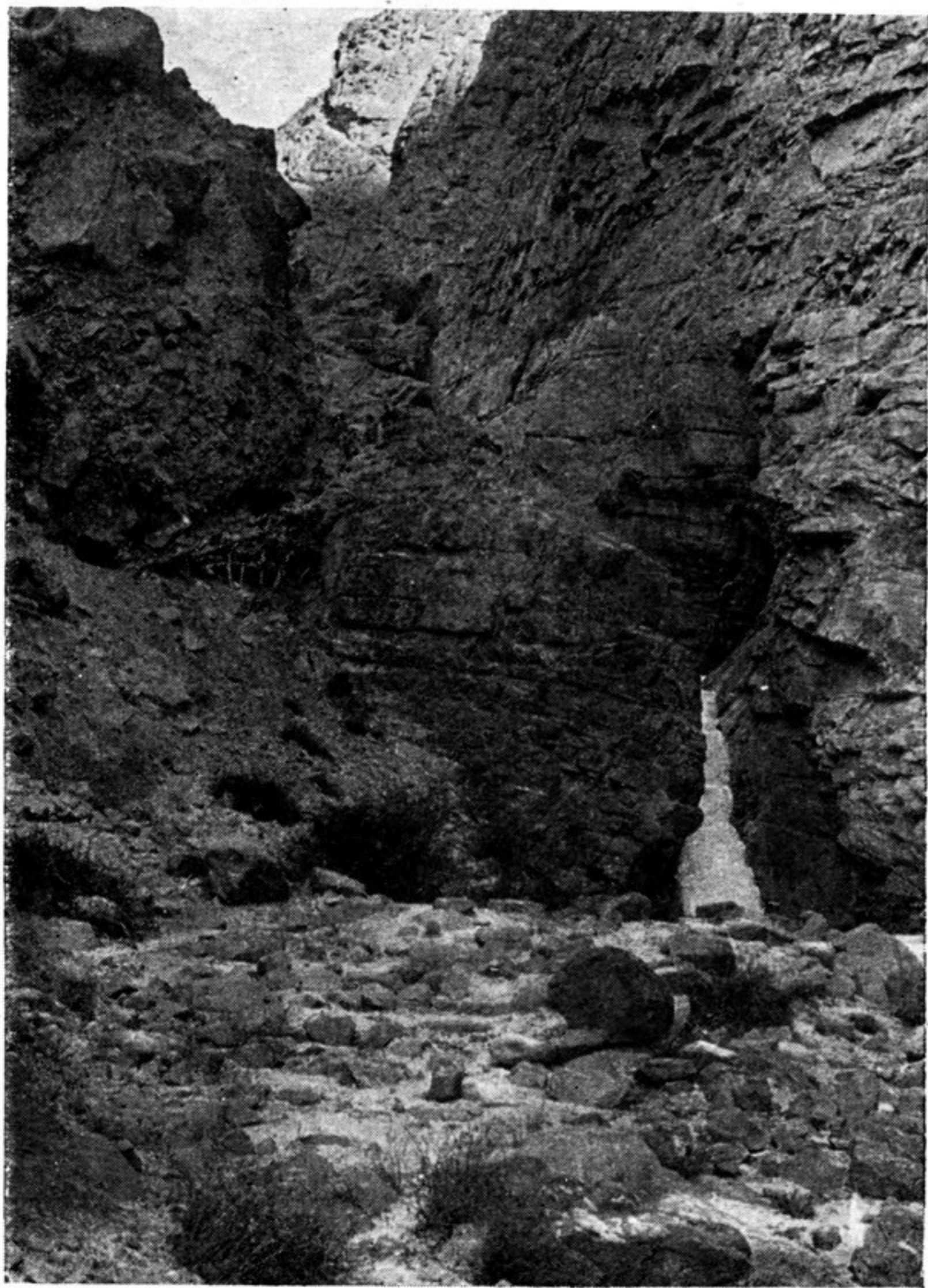


the process was lengthy; but with this exception the track to the summit, though steep, was on the whole not bad. It faced southwards, and was free from snow. Looking from the summit northwards, we found a perilous descent before us. The slope was steep and covered



HAULING YAKS UP A PRECIPICE NEAR THE SANDAL DAWAN.

with snow, so that both men and animals had many a tumble. We hoped that things would improve when we reached lower ground, but there we had to reckon with very slippery, sloping ice, on which the animals fell and slid for yards together. By scattering earth over the ice we were able by dusk, with the foremost part of the