

for cooking; its bottom must have stood in the earth, so that fire could be built around it.

However, the combination of bake-oven, kettle, mealing-stone, and child's skeleton corresponds wholly with the overlying layer, its pots, and its skeleton; so that we have here two successive periods of culture. The pots *c* and *d* must already have been out of use and buried when pots *a* and *b* were put in position; but they must also have been older than the child's skeleton *a*, No. 5, which lies in the layer between pots *a*, *b* and *c*, *d*. Skeleton *a*, therefore, must be referred to those inhabitants of the hill who used bake-ovens *a*, *b*, while the lower skeleton *β* belongs to the older period. The highest layer—that is, the youngest period—is, however, represented by the skeletons destroyed in terrace 1*a*, and by the thicker diagonal wall *A*. Therefore, at least three successive periods have left their remains between the surface of the hill (+40 feet) and the level of +27 feet.

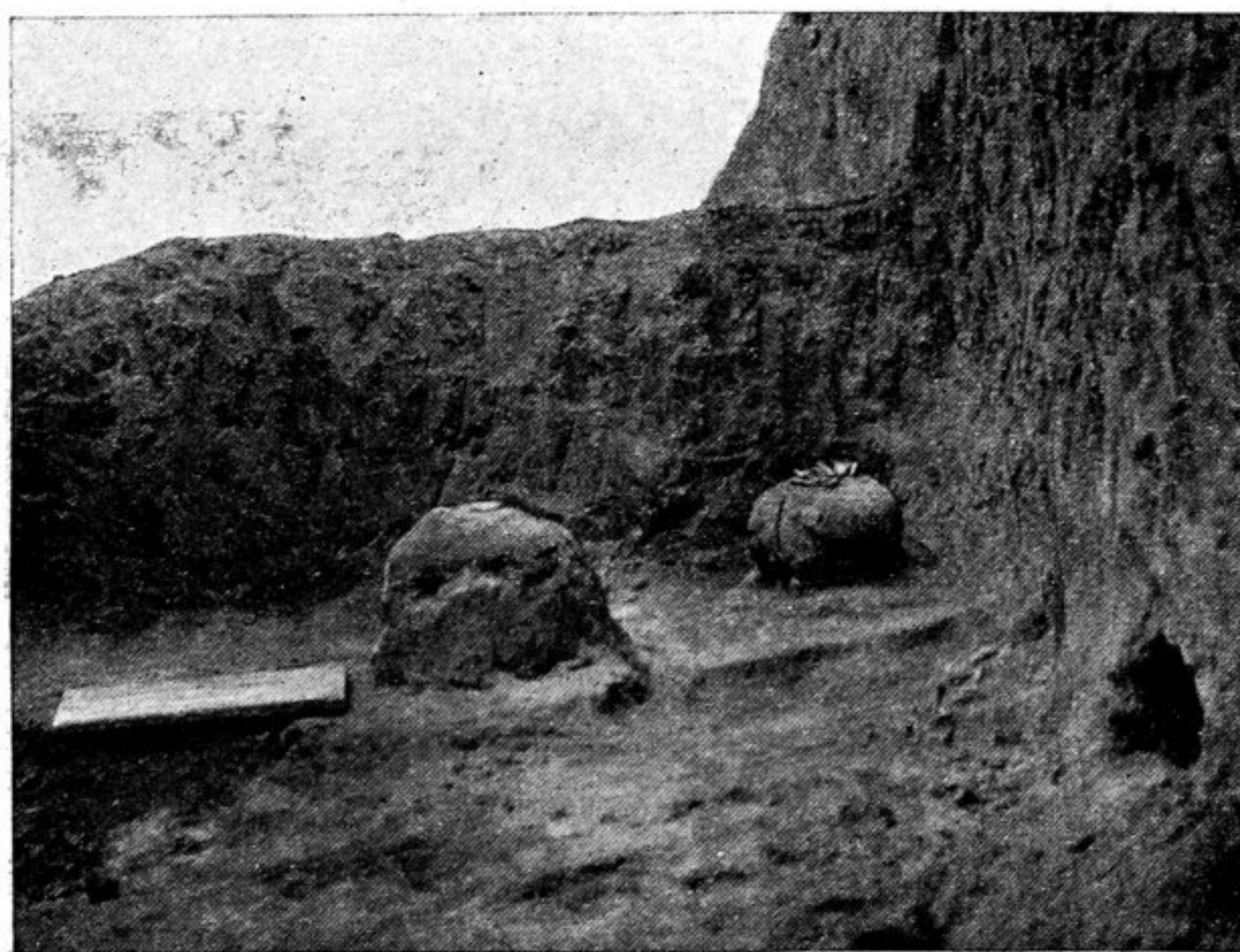


Fig. 27.—Pithoi *c* and *d* in Position and Skeleton *β*.

in all respects similar. The similarity in culture will be more evident when we consider the pottery that is characteristic of these layers.

When the upper terrace was begun on March 25, it yielded within three hours a great quantity of fragments of different kinds of pottery, the greater part belonging to a gray or red monochrome ware. The red was especially characterized by a good polish, while in the gray fragments one was struck by the excellent quality of the clay and of the technique. I will designate this monochrome variety for the present as group *x*. Besides this group *x*, there occurred painted ware of an entirely different technique—both finer and coarser vessels—which we were obtaining at the same time from the galleries; that is, from the middle layers of the hill. These fragments may for the present be called group *y*, in contradistinction to the others, or group *x*. The relation of these two groups, however, on their appearance in terrace 1, was such that the monochrome was predominant at the top, but diminished in favor of group *y* the deeper we dug.

In the east wall of terrace 1 still another skeleton (No. 3) was excavated at the level +28 feet, besides another left in the earth.

The question then arises whether these periods differed in their culture characteristics. In all probability they did not, for the beads in terrace 1*a* resemble those found with the child's skeleton in 1*b*, and the pots *a* to *d*, as regards form and technique, are