

merge into the great valley-floor. It is essentially a valley of deep loess accumulation, a grassy settling ground of dust blown up from the Kizil Kum. On the other hand, its great dust-beds undoubtedly alternate in depth with the flood-plain deposits of its cross-streams. Out of ten days, during seven there was a

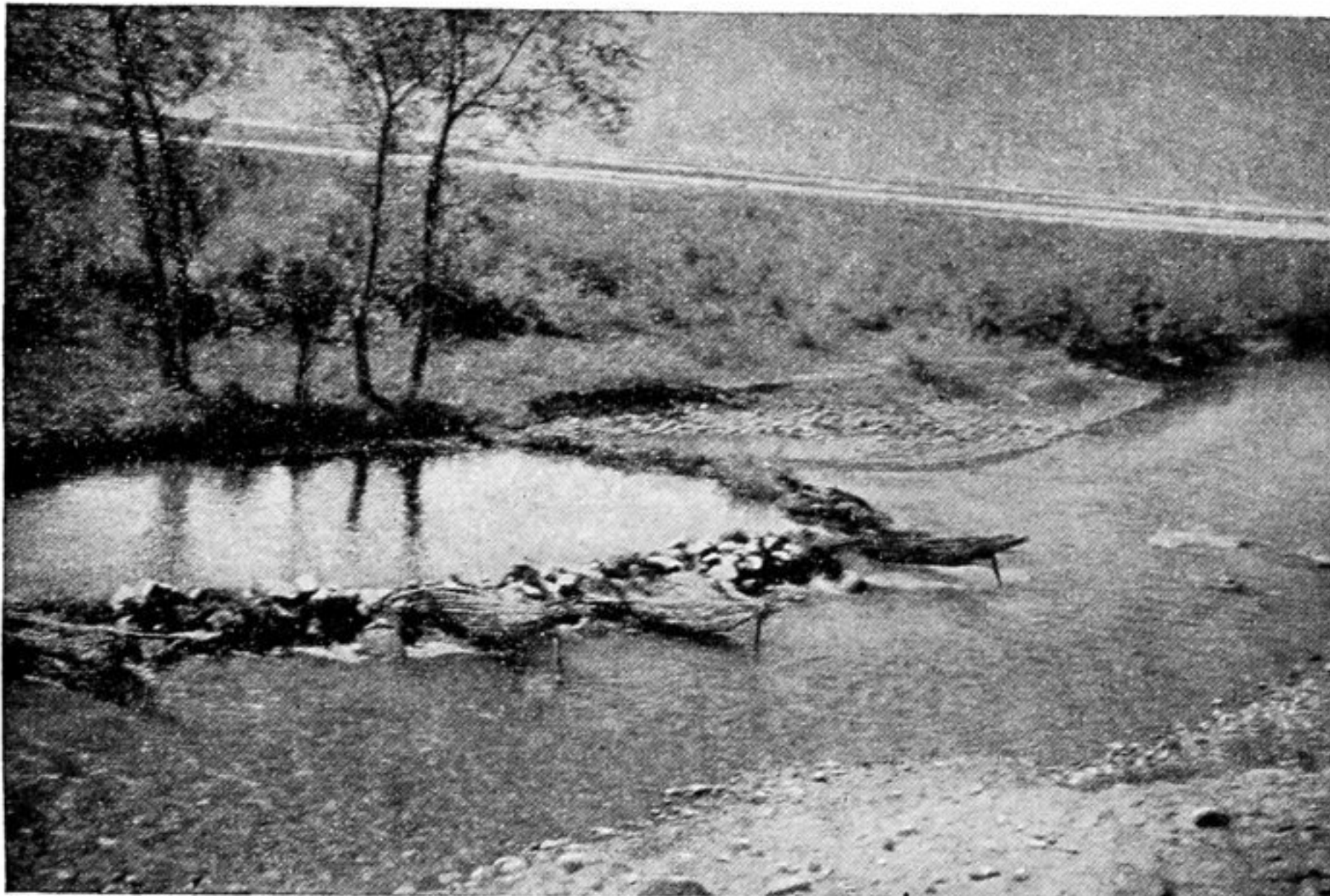


Fig. 448.—Fish Traps of the Kizil Su.

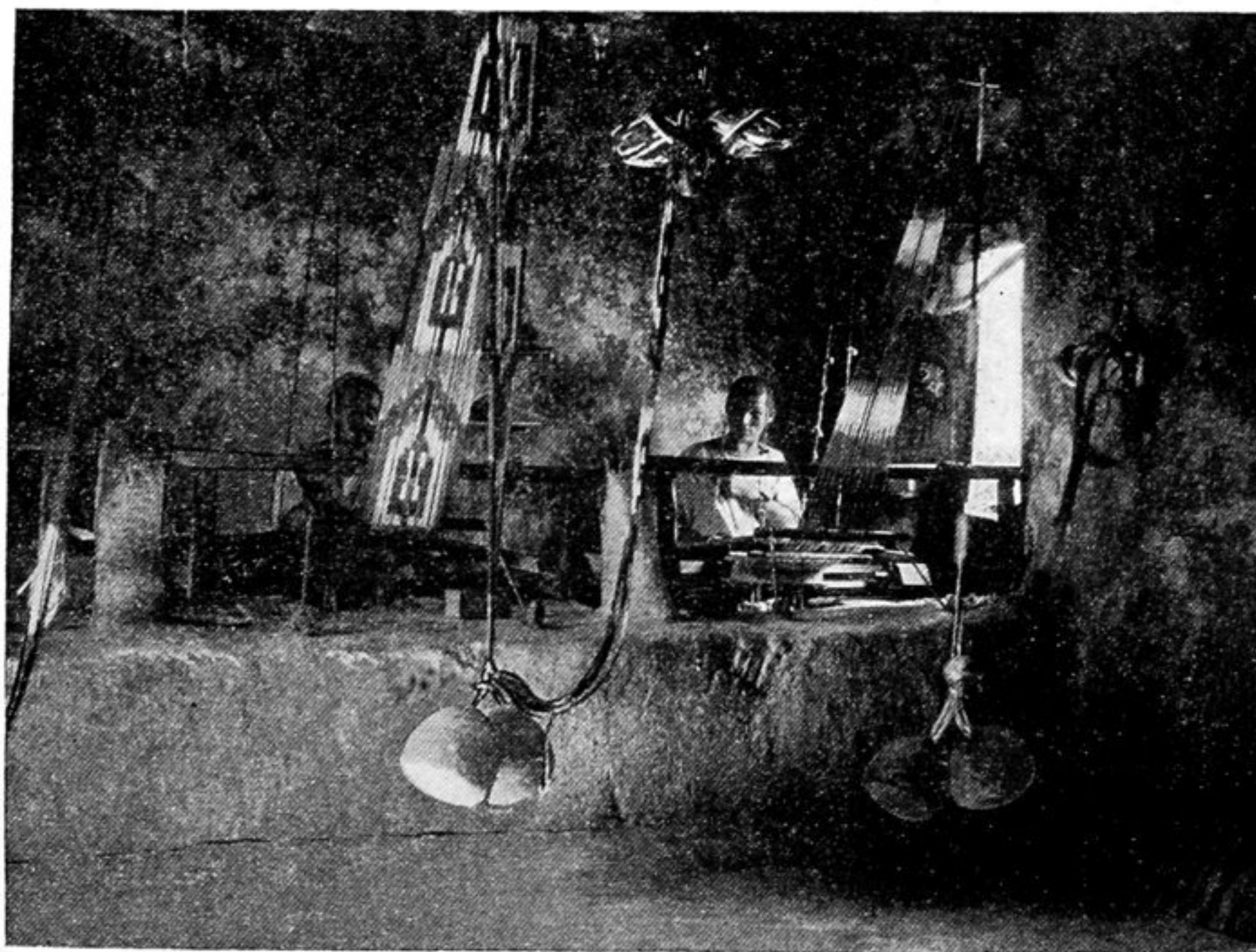


Fig. 449.—Silk Factory in Karategin.

yellow haze, and of these days two were so gloomy that a few hundred yards was the range of vision. It is, therefore, a region of still living loess. The kurgans and burial mounds left by its more ancient inhabitants are now mantled with 2 feet or more of loess.