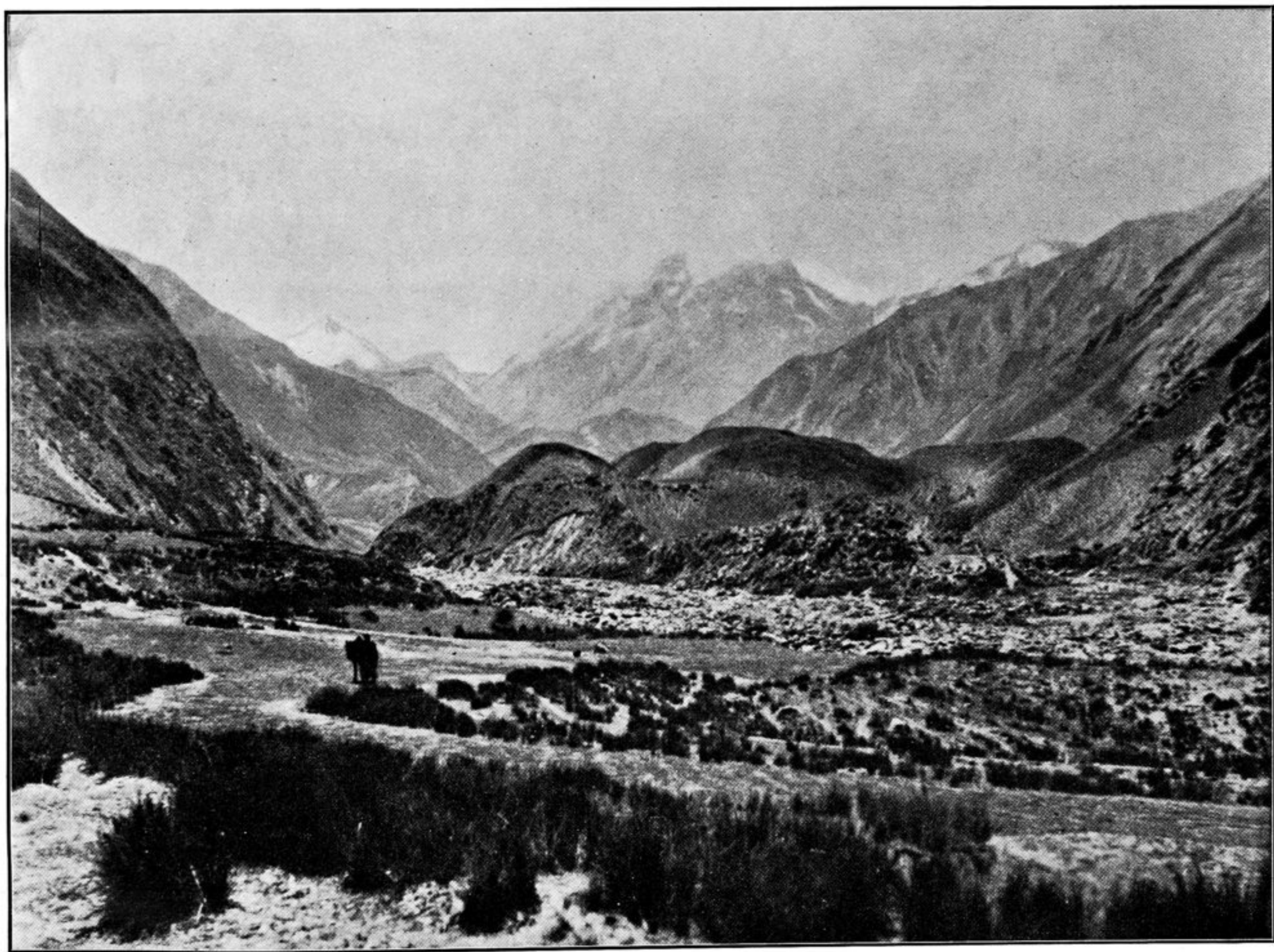


8. A.—ERODED RANGES OF OUTER K'UN-LUN, LOOKING TO N.W. FROM ABOVE YAGAN-DAWAN (SEE PAGE 7).  
Loess-covered spurs in foreground.



8. B.—HEAD OF NISSA VALLEY SEEN FROM TAM-OGHIL ABOVE TOR (SEE PAGE 12).  
Loess-covered old moraine ridges in foreground.