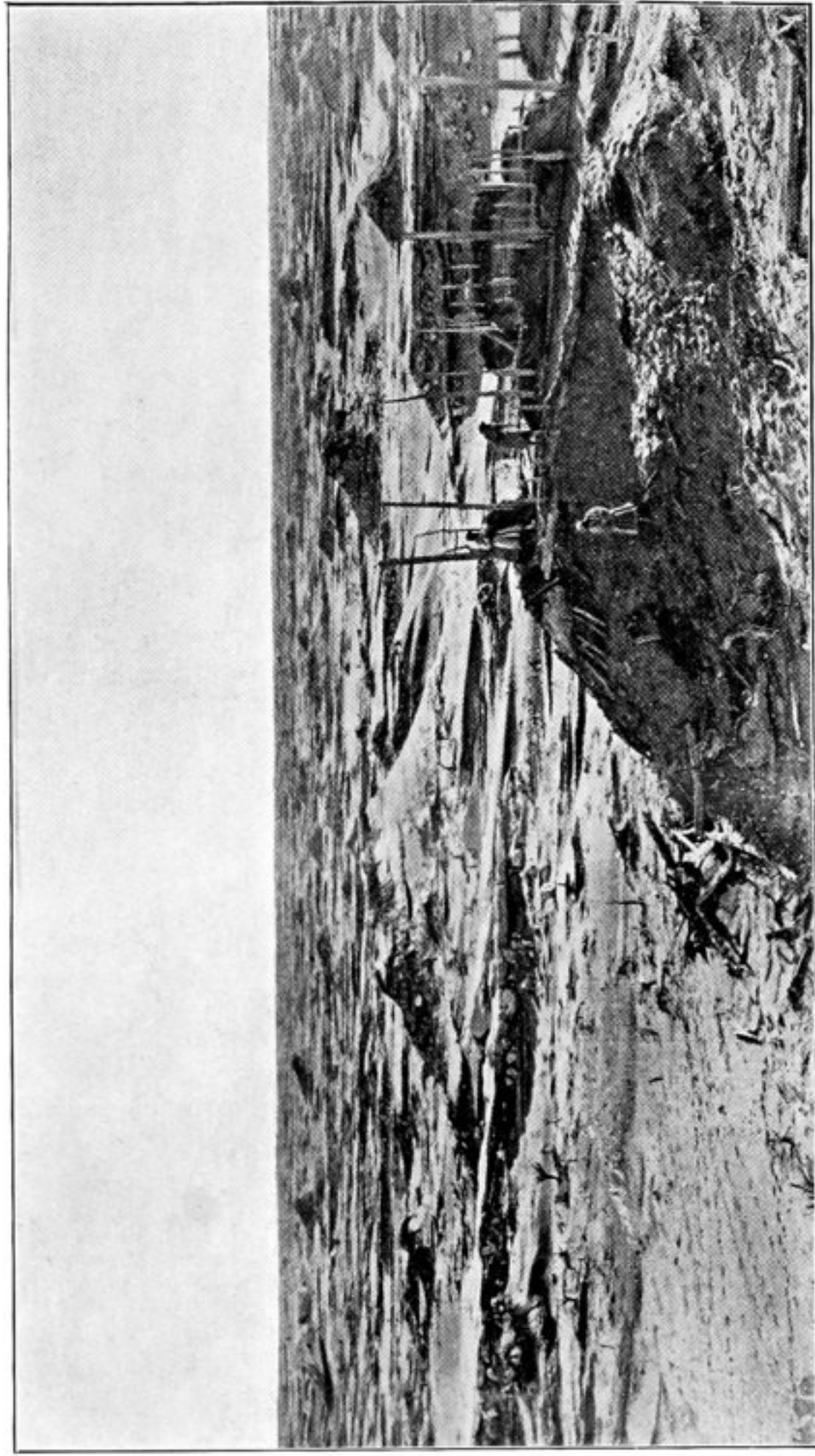


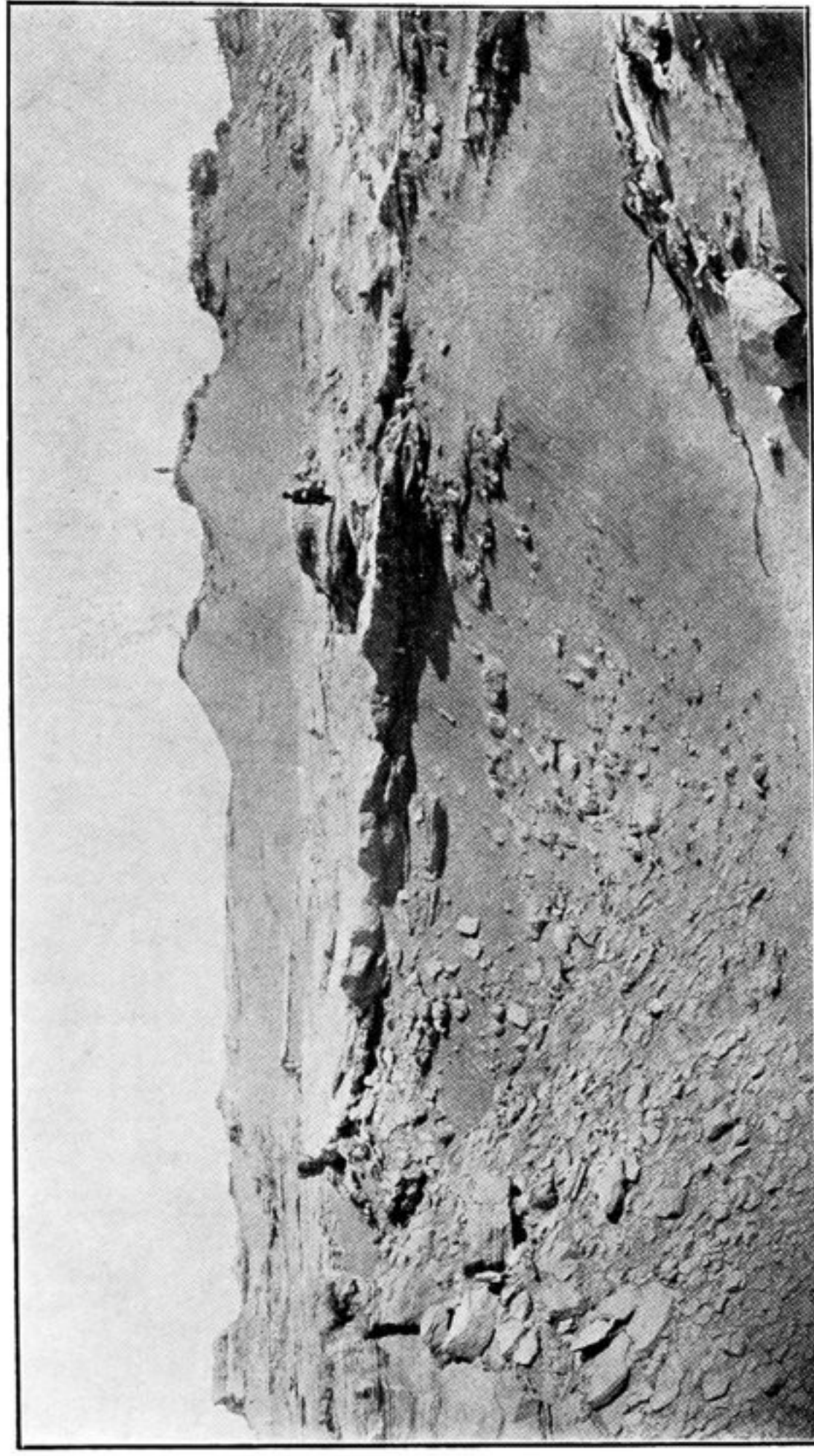
12. A.—VIEW TO SOUTH-EAST FROM LOU-LAN STUPA, ACROSS WIND-ERODED  
GROUND SHOWING YARDANGS (SEE PAGE 16).  
Ruined dwelling in foreground.



12. B.—VIEW TO SOUTH FROM LOU-LAN STUPA, ACROSS WIND-ERODED  
GROUND SHOWING YARDANGS (SEE PAGE 16).  
Erosion terrace bearing ruin in foreground.



12. C.—WIND-ERODED WALLS AND INTERIOR OF RUINED FORT L. K.,  
LOP DESERT (SEE PAGE 29).  
Timber debris of eroded quarters in foreground.



12. D.—WIND-ERODED GROUND OUTSIDE WESTERN WALL OF RUINED FORT L. K.,  
LOP DESERT (SEE PAGE 29).  
Note Nullah excavated by wind in foreground. Dead tree trunks on right.