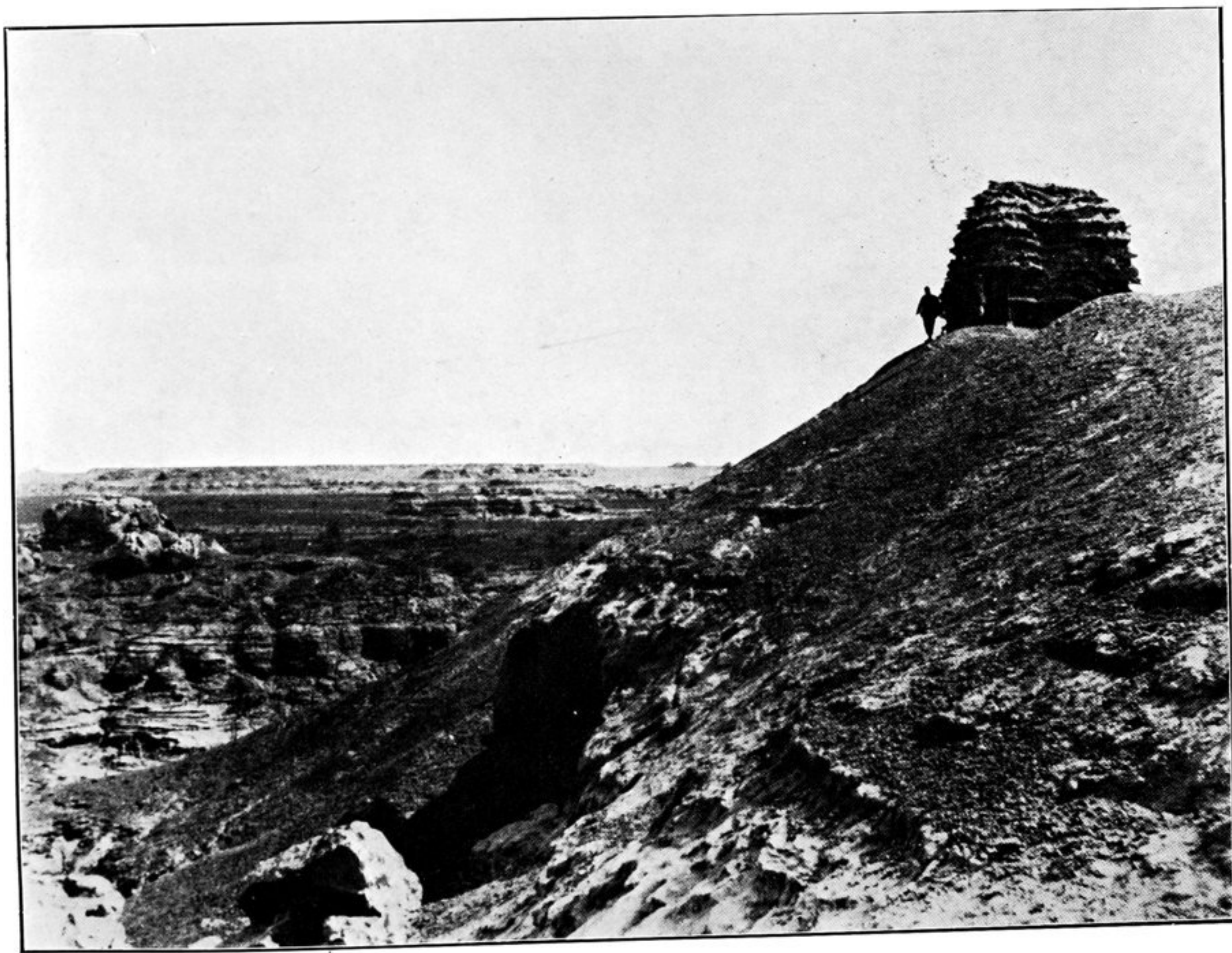


13.A.—REMAINS OF ANCIENT CHINESE *LIMES* WALL IN DESERT WEST OF TUN-HUANG
(SEE PAGES 16, 31).

Wall built of stamped clay and reed fascines in second century B.C.



13.B.—VIEW TOWARDS ERODED TERRACES OF TERMINAL BASIN OF SU-LO-HO FROM
ANCIENT WATCH-TOWER OF TUN-HUANG LIMES (SEE PAGE 16).

Eroded Mesa on left; gravel 'Sai' in distance.