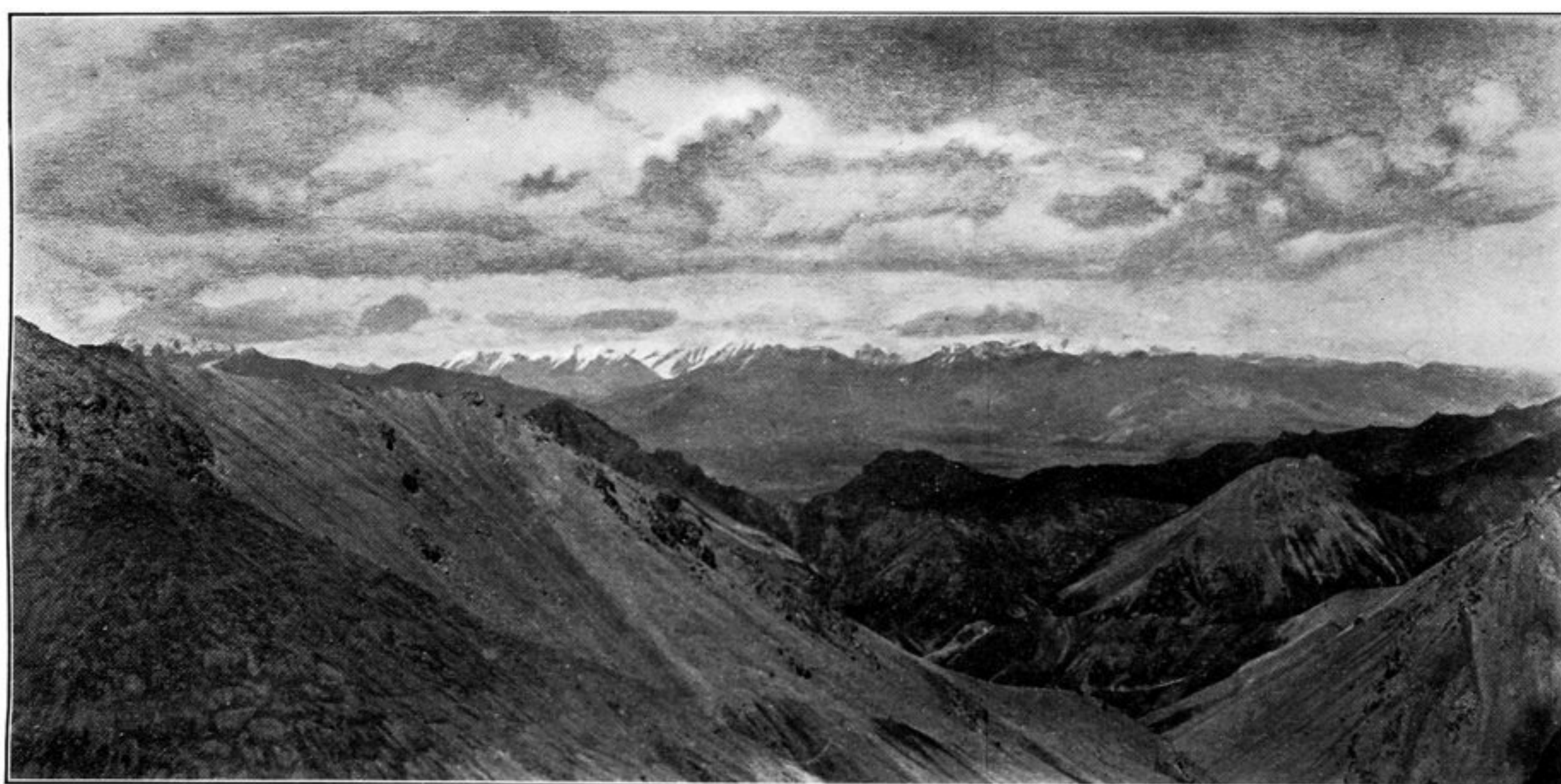




16. A. — TO-LAI-SHAN RANGE, LOOKING SOUTH FROM WATERSHED
ABOVE KAN-CHOU R. SOURCES (SEE PAGE 17).



16. B. — RICHTHOFEN RANGE, LOOKING NORTH-EAST FROM ABOVE
HUO-NING-TO PASS, AT CIRC. 15,600 FEET (SEE PAGE 17).



16. C. — ALEXANDER III. RANGE, LOOKING SOUTH-WEST FROM ABOVE
HUO-NING-TO PASS ACROSS PEI-TA-HO VALLEY (SEE PAGE 17).