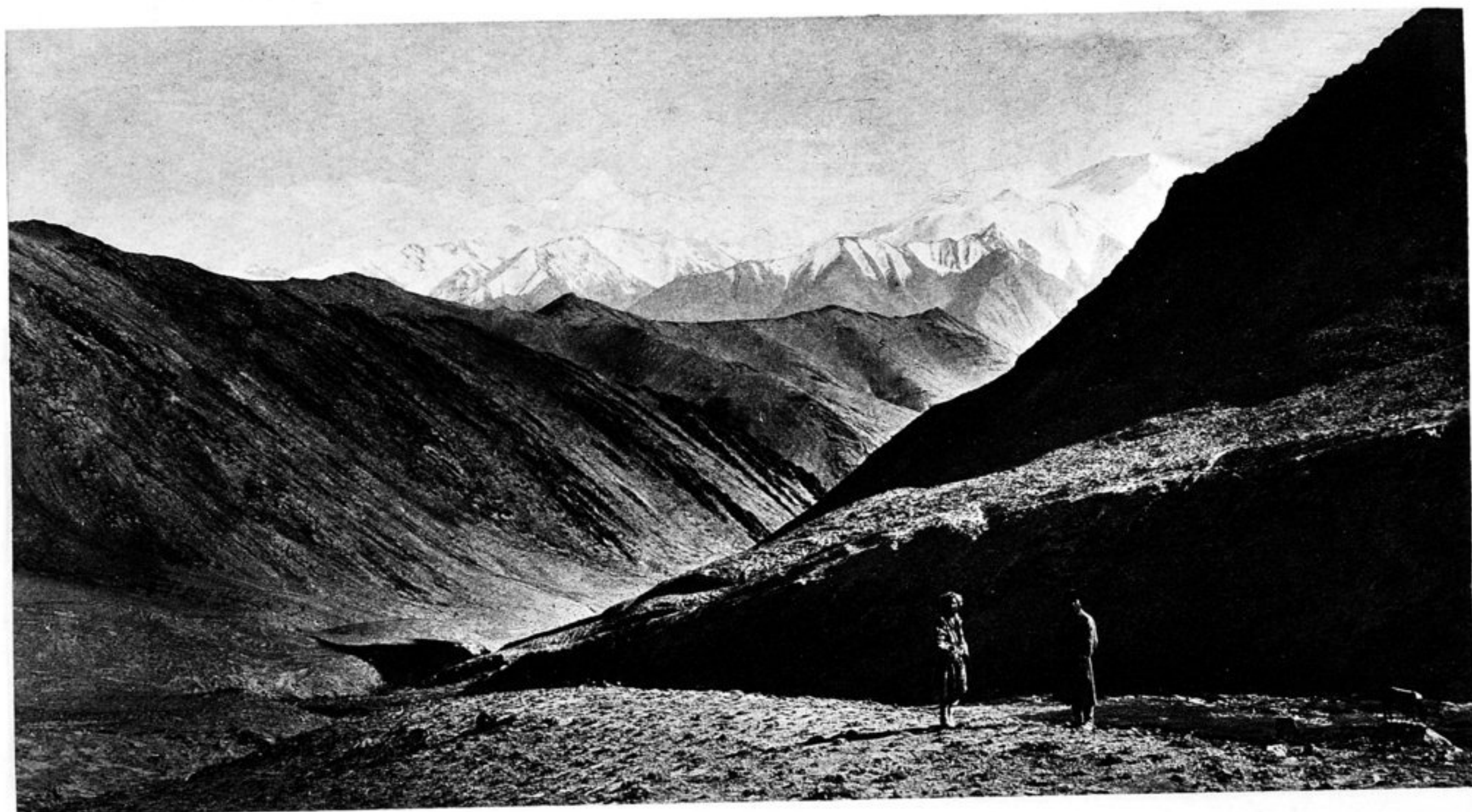




22.A. — VIEW TO SOUTH-WEST TOWARDS MAIN K·UN-LUN RANGE FROM TRIANGULATED PEAK (h.s. E, 18,612 FEET) ABOVE MANDAR-KOL PASS (SEE PAGE 21).



22.B. — VIEW TOWARDS MAIN K·UN-LUN RANGE, SOUTH OF YURUNG-KASH RIVER, FROM CAMP 458, TAR-KOL (SEE PAGE 21).