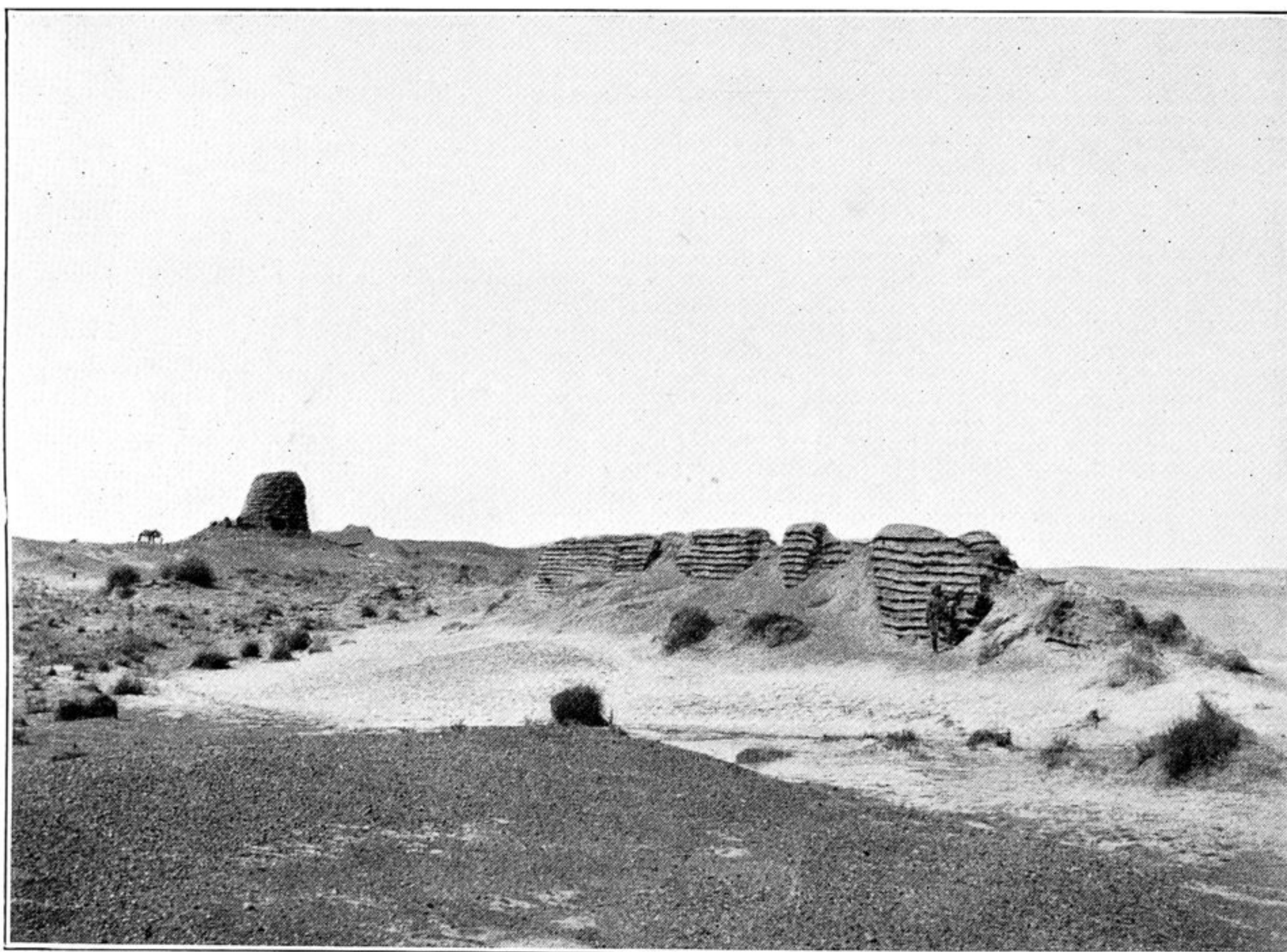




70. RUIN OF ANCIENT WATCH-TOWER, T. III, NEAR WESTERN END OF TUN-HUANG *LIMES*.
The spot where the first discovery of an early Chinese record on wood was made is marked by the two men
in the foreground.



71. LINE OF *LIMES* WALL NEAR WATCH-TOWER, T. XIII.