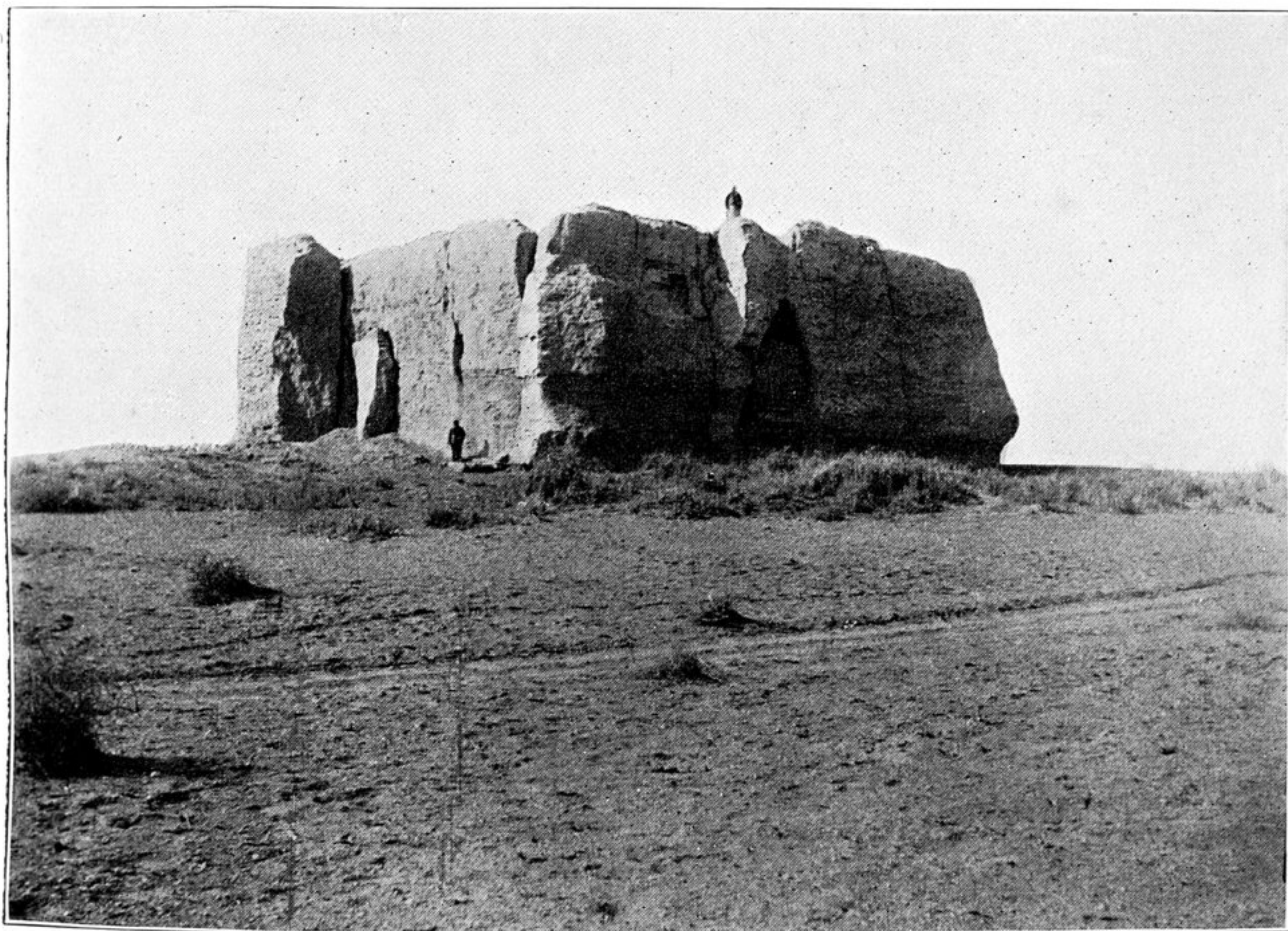




72. RUIN OF ANCIENT WATCH-TOWER, T. IV. C, ON WESTERN FLANK OF TUN-HUANG LINES, WITH VIEW TO NORTH.

On left an eroded clay terrace with deep-cut Nullah. Across depression with Tograks and tamarisks is seen in distance an isolated clay terrace (A), bearing remains of ruined watch-tower, T. IV A.



73. RUIN OF ANCIENT CHINESE FORT, MARKING THE POSITION OF THE 'JADE GATE', SEEN FROM NORTH-EAST.