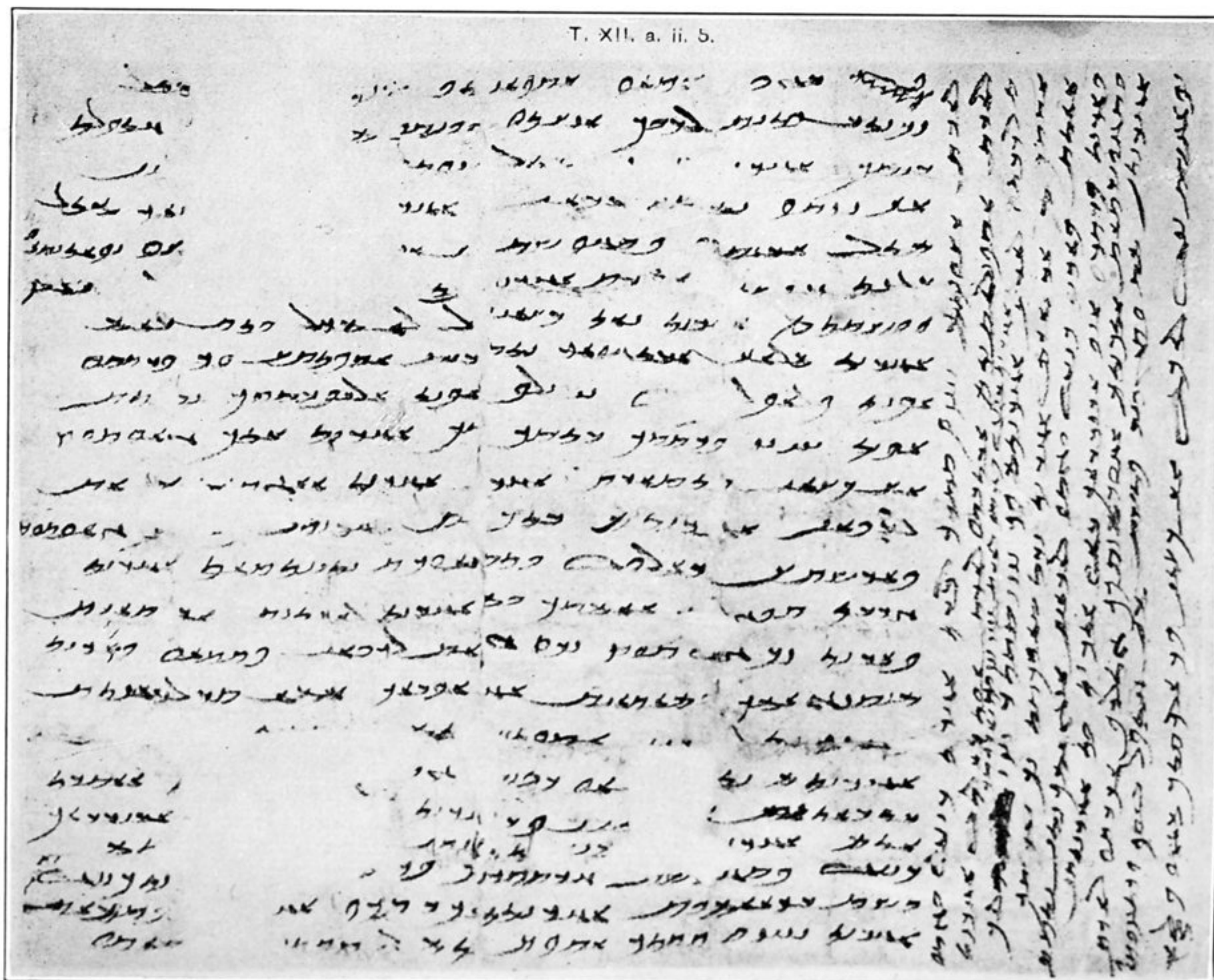


75. ANCIENT IMPLEMENTS AND ARTICLES OF EQUIPMENT, EXCAVATED MAINLY FROM RUINED WATCH-STATIONS OF EARLY CHINESE BORDER LINE, TUN-HUANG.

Scale, one-sixth.

10. Hemp shoe. 11. Wooden key. 12, 20. Parts of wooden locks. 13. Wooden boot-last. 14. Fragment of calcined reed fascine. 15. Wooden socket for attaching seal. 16. Bronze arrow-head. 17. Carved wooden hook. 18. Block of wood for holding tapers. 19. Wooden eating bowl.



76. EARLY SOGDIAN DOCUMENT ON PAPER, FROM WATCH-STATION T. XII. A, TUN-HUANG LIMES.