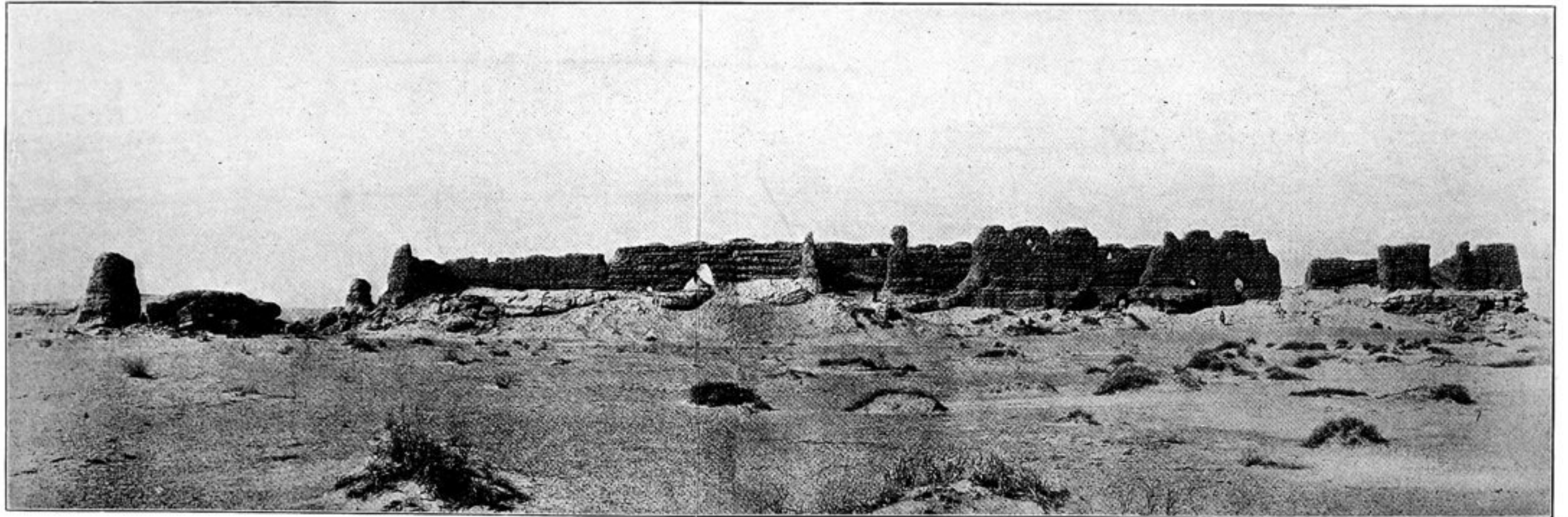


77. SOUTHERNMOST NAN-SHAN RANGE, SEEN FROM ACROSS BASIN OF SU-LO-HO HEADWATERS.



78. RUINS OF ANCIENT CHINESE MAGAZINE, T. XVIII, TUN-HUANG LIMES, SEEN FROM SOUTH.
The figures of men standing at different points of the structure serve to indicate its size.