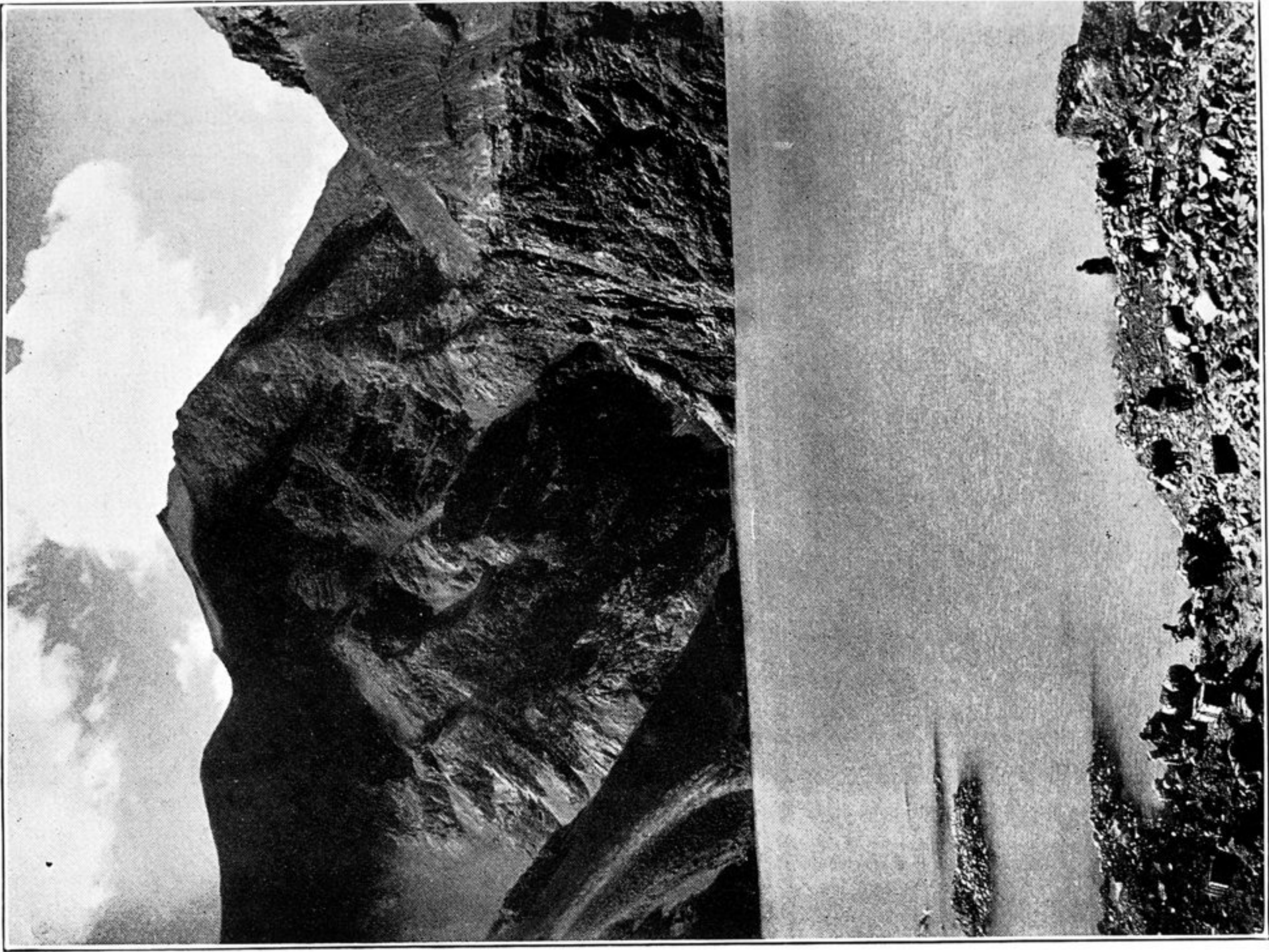


132. GORGE OF BARTANG RIVER, ABOVE SAUNAB,  
BLOCKED BY EARTHQUAKE.

Newly formed tarn in foreground; former river bed buried under rock debris.



133. SHEDAU LAKE FORMED BY BARRAGE, THROWN  
DOWN BY SAREZ EARTHQUAKE.