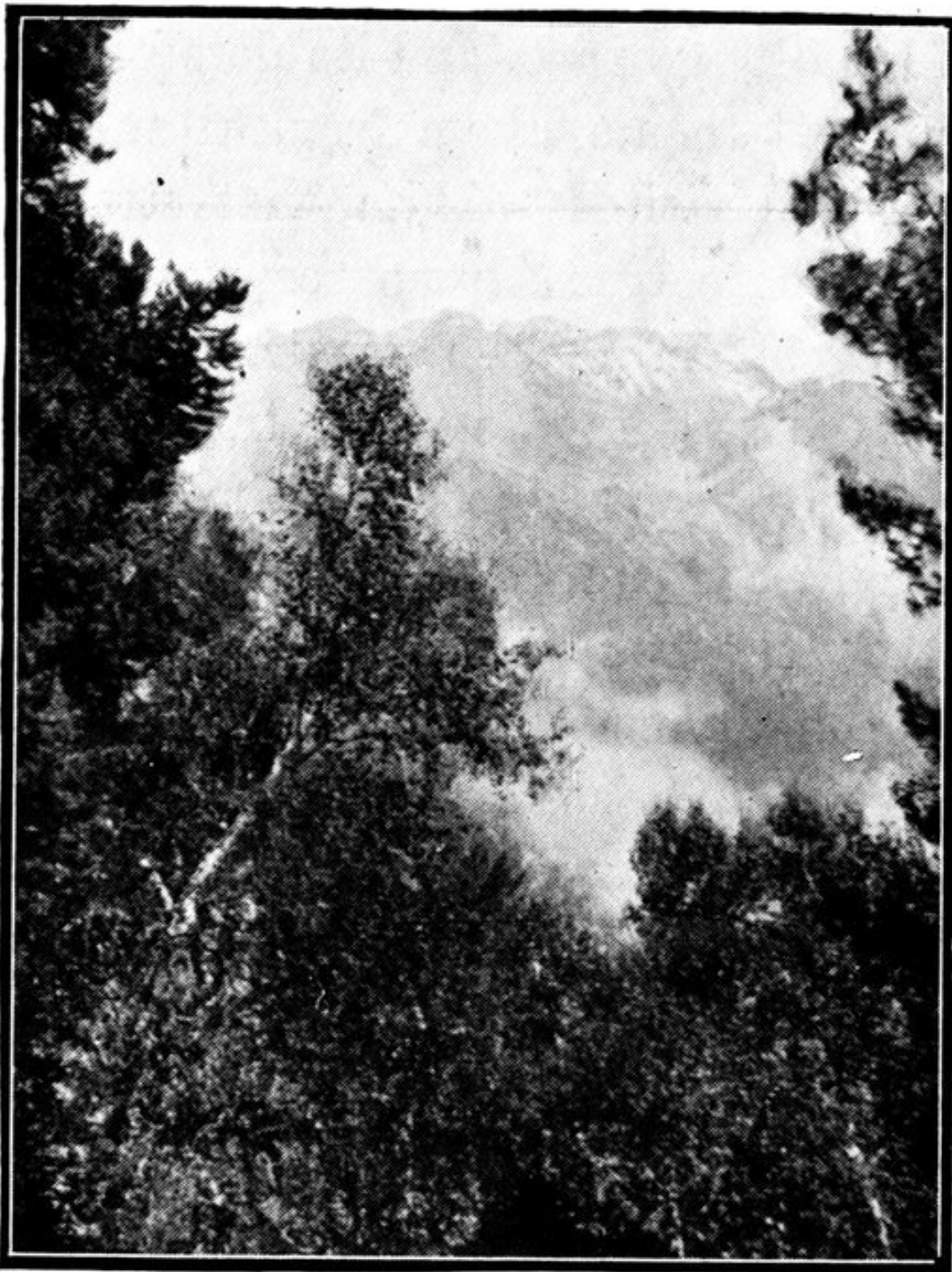


# Sand-buried Ruins of Khotan

---

## CHAPTER I

### CALCUTTA TO KASHMIR



MOHAND MARG, KASHMIR.

It was from the Alpine plateau of Mohand Marg, my beloved camping-ground for three Kashmir summers, that I had in June, 1898, submitted to the Indian Government the first scheme of the explorations which were to take me across the great mountain barriers northward and into the distant deserts of Khotan. Almost two years had passed when I found myself,

early in May, 1900, again in Kashmir and within sight of