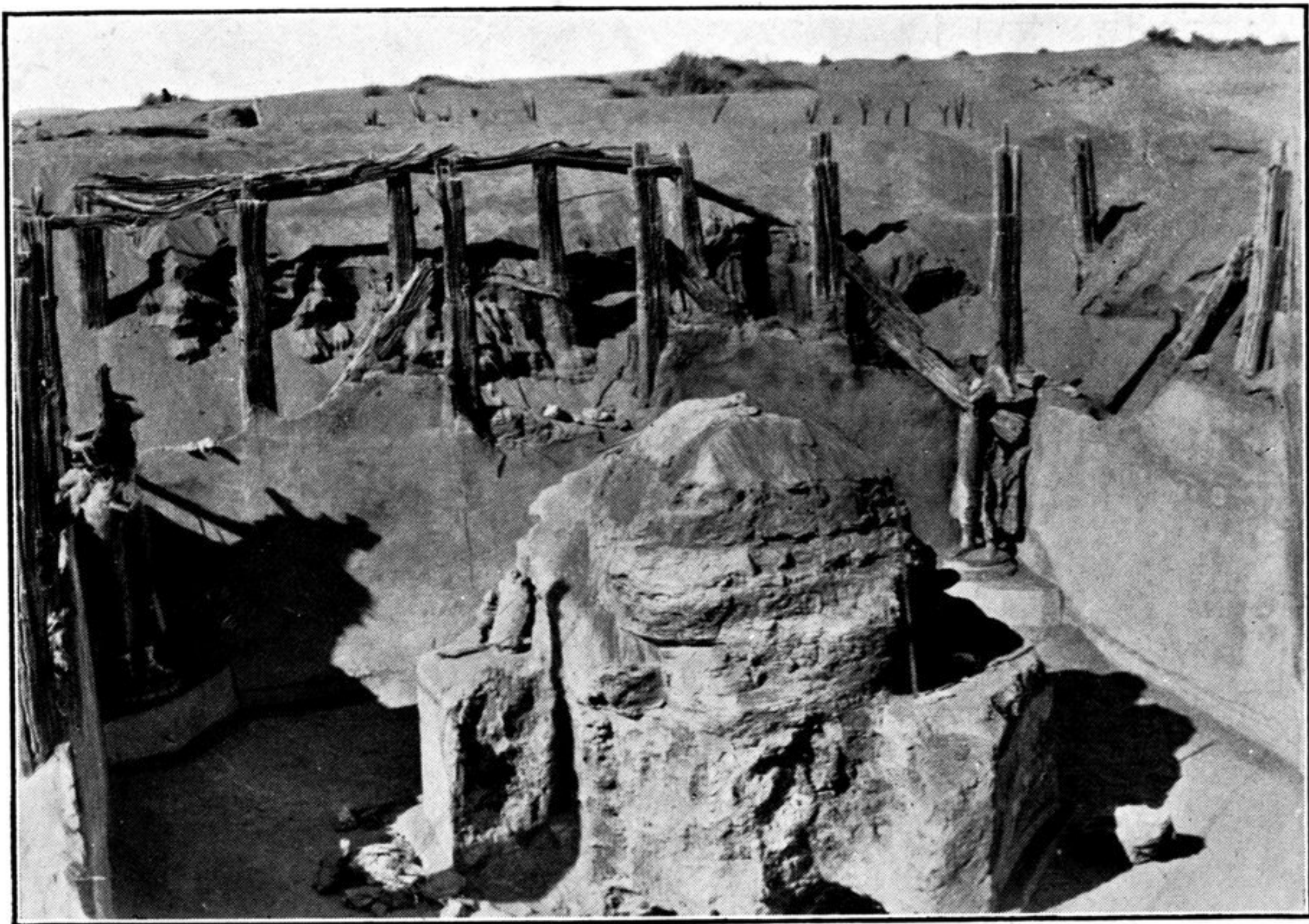


worship, apparently after the fashion of the Mahayana school, were particularly numerous. Judging from the palæographical features displayed by the very clear Brahmi hand this manuscript may well have been written as early as the fifth century. The manuscript, which had the shape of the usual Indian Pothi, must have been broken in the middle, either owing to folding or in the course of some previous digging by "treasure-seekers"; for among the



INTERIOR OF RUINED TEMPLE CELLA, ENDERE, AFTER EXCAVATION.

separately recovered packets of leaves, right and left halves were represented in about equal numbers. The pagination numbers read by me run up to forty-six, and probably about one-half of the original folia may yet be restored from these pieces.

Another very remarkable find was a closely-packed roll of paper, about 4 inches high and half an inch thick, from which under the expert treatment secured in the British Museum the four large folia reproduced in my "Preliminary Report" have since been unfolded.