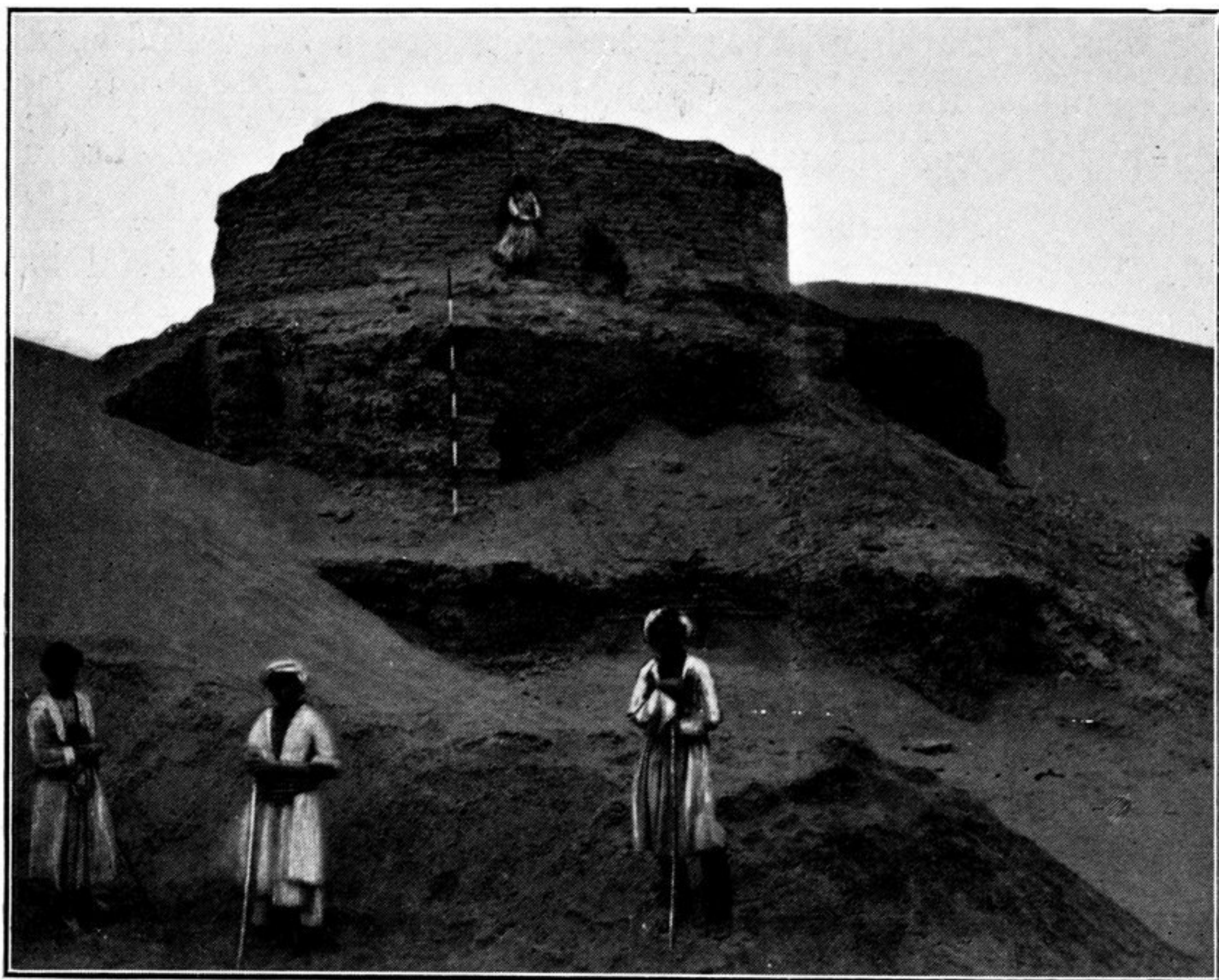


the lines of masonry marking the quadrangular enclosure of the Stupa court, could be readily made out. Near the south corner of the enclosing wall fragments of the heads of colossal stucco statues, the spoil of casual diggings by "treasure-seekers," were lying on the surface. I realised at once that there was scope here for



RAWAK STUPA, SEEN FROM SOUTH CORNER OF COURT.

extensive excavations, and accordingly lost no time in sending back urgent orders for a reinforcement of labourers.

Fortunately the position of the ruin, within a day's march of the oasis, enabled me to secure a large number of willing workers from the nearest villages of the Jiya tract. A favourable factor of still greater importance was the relative ease with which the question of water supply for such a number of men was solved. For though the sand dunes surrounding us looked more formidable than at any ancient site previously explored, it was possible to dig a well in a