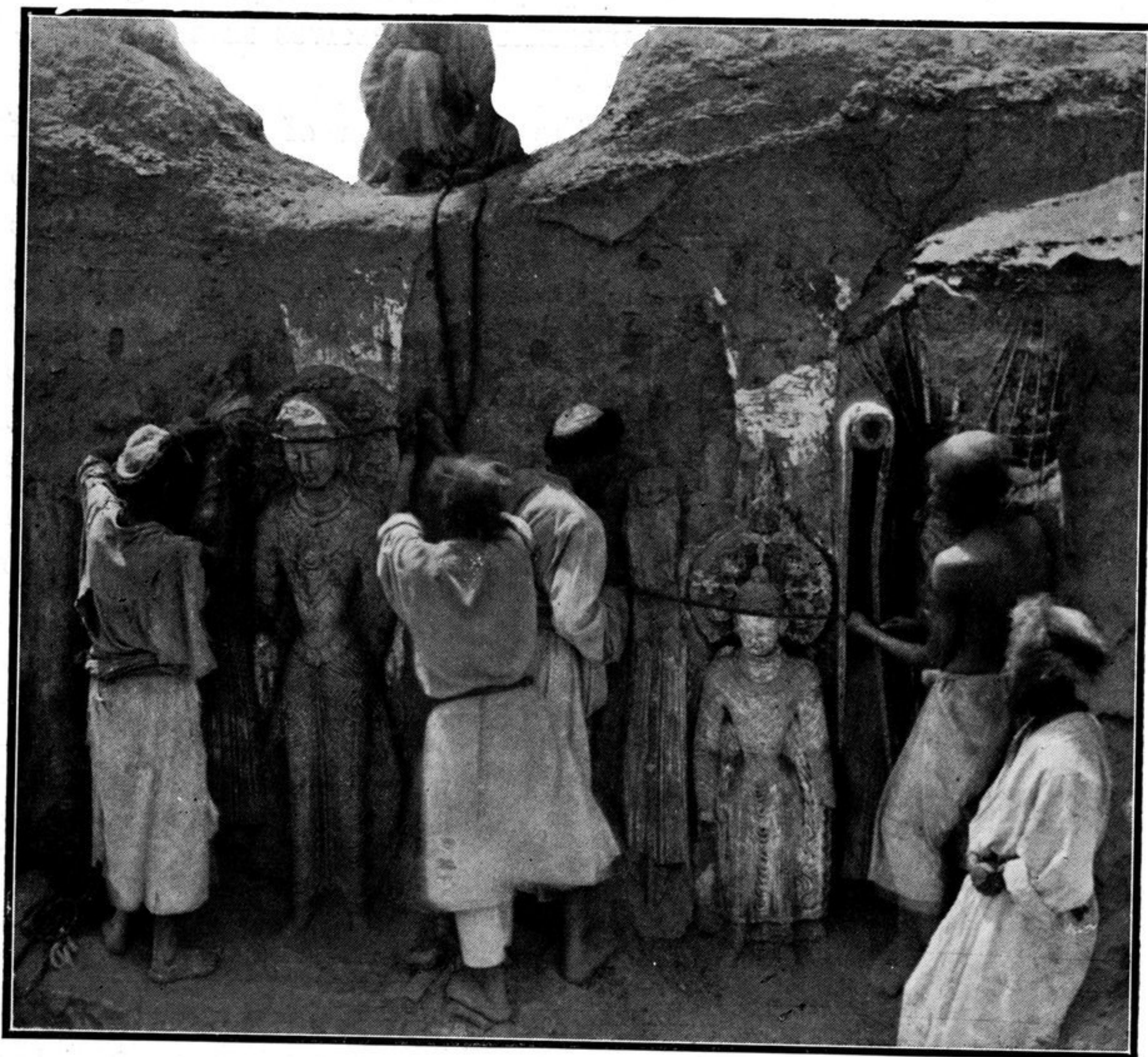


the colossal image seen to the extreme right by comparison with the labourers.

The conditions here briefly indicated, which rendered the excavation work so difficult and risky, are also a sufficient explanation why most of the colossal statues were found without



RELIEVO STATUES OF RAWAK STUPA COURT, SOUTH-WEST WALL, AFTER EXCAVATION.

their heads. Their upper portions, just like the top segments of the great halo seen on the left of the photograph reproduced on p. 454, had necessarily been left much longer without the protecting cover of sand, and had accordingly fallen away from the wall that once supported them. The heads of the smaller images