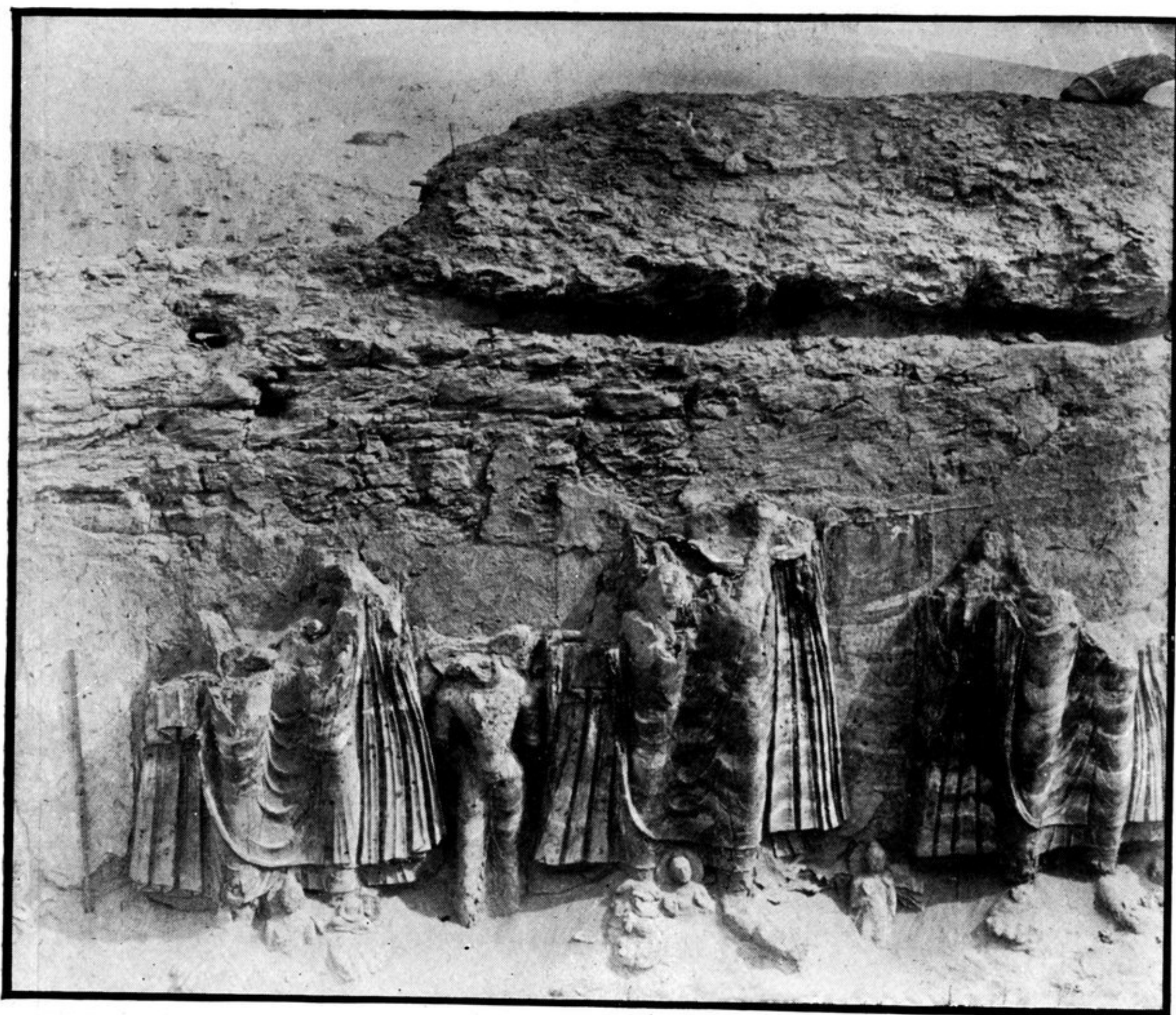


gates," which Indian convention places at the entrances of all assemblies whether real or mythical. It is probable that the guardians of the Rawak Stupa court, like those sculptured at the approaches to many a sacred Buddhist shrine in India, were meant for Yakshas, a category of attendant divinities. But Buddhist iconography invariably gave to these a human appearance, and it



TORSOS OF COLOSSAL STATUES ALONG INNER SOUTH-EAST WALL.

was manifest that the figures here unearthed exhibit the customary dress of the period and of the country. The boots seen on the feet of the two guardians which stood inside the gate to the proper right (see p. 463) were wide at the top and showed remains of dark red colouring, with an ornamental border on their brim. Into them were tucked bulging trousers, hidden for the greater part by two