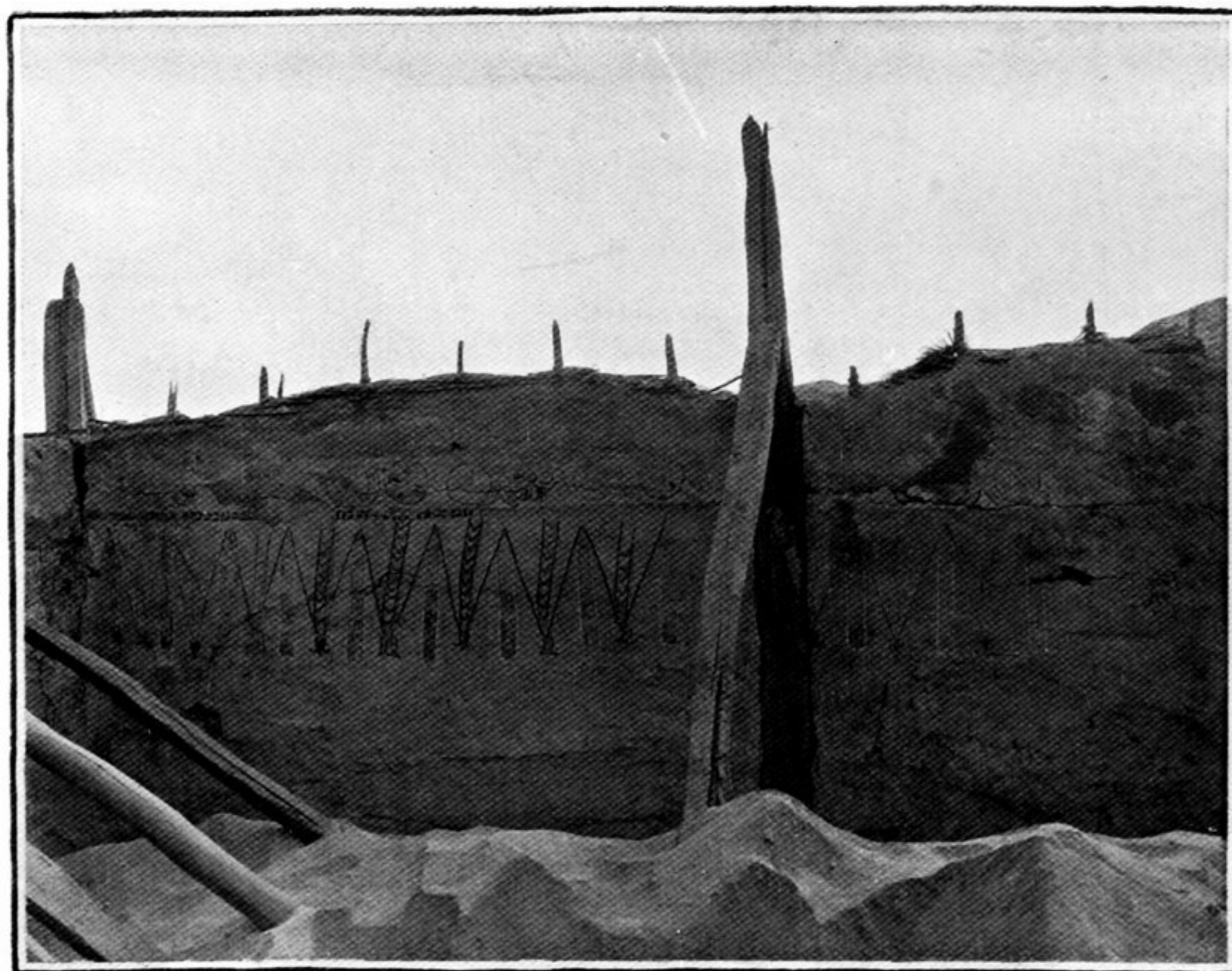




NORTH WALL OF HALL IN RUINED HOUSE N. III, NIYA SITE,
AFTER EXCAVATION.

(See Chap. XI. sec. ii.)



SOUTH WALL IN HALL OF RUINED HOUSE, N. III, NIYA SITE,
AFTER EXCAVATION.

(See Chap. XI. sec. ii.)