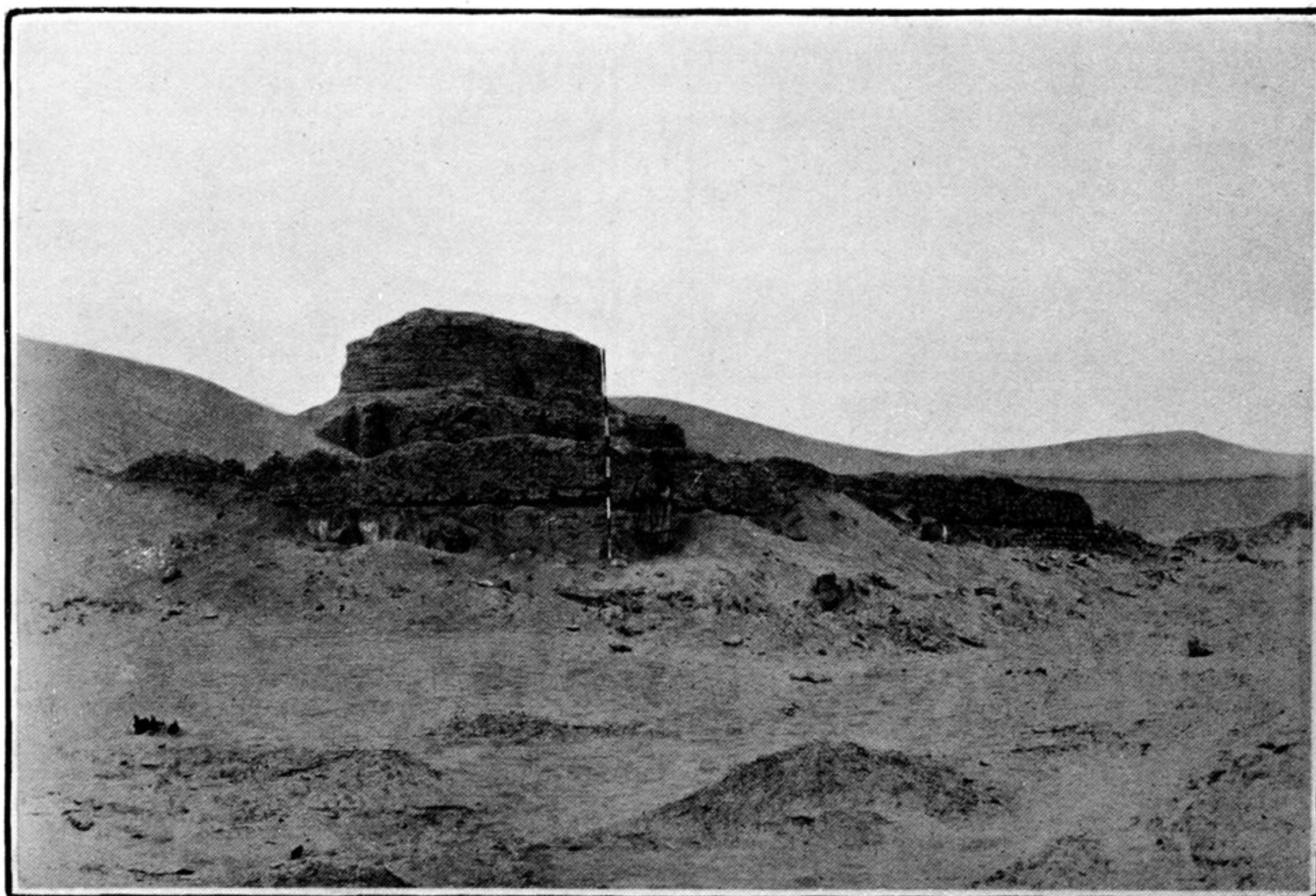


a



RAWAK STŪPA AND ENCLOSING QUADRANGLE, SEEN FROM SOUTH.

(See Chap. XIV. sec. iii.)

b

lxxvii

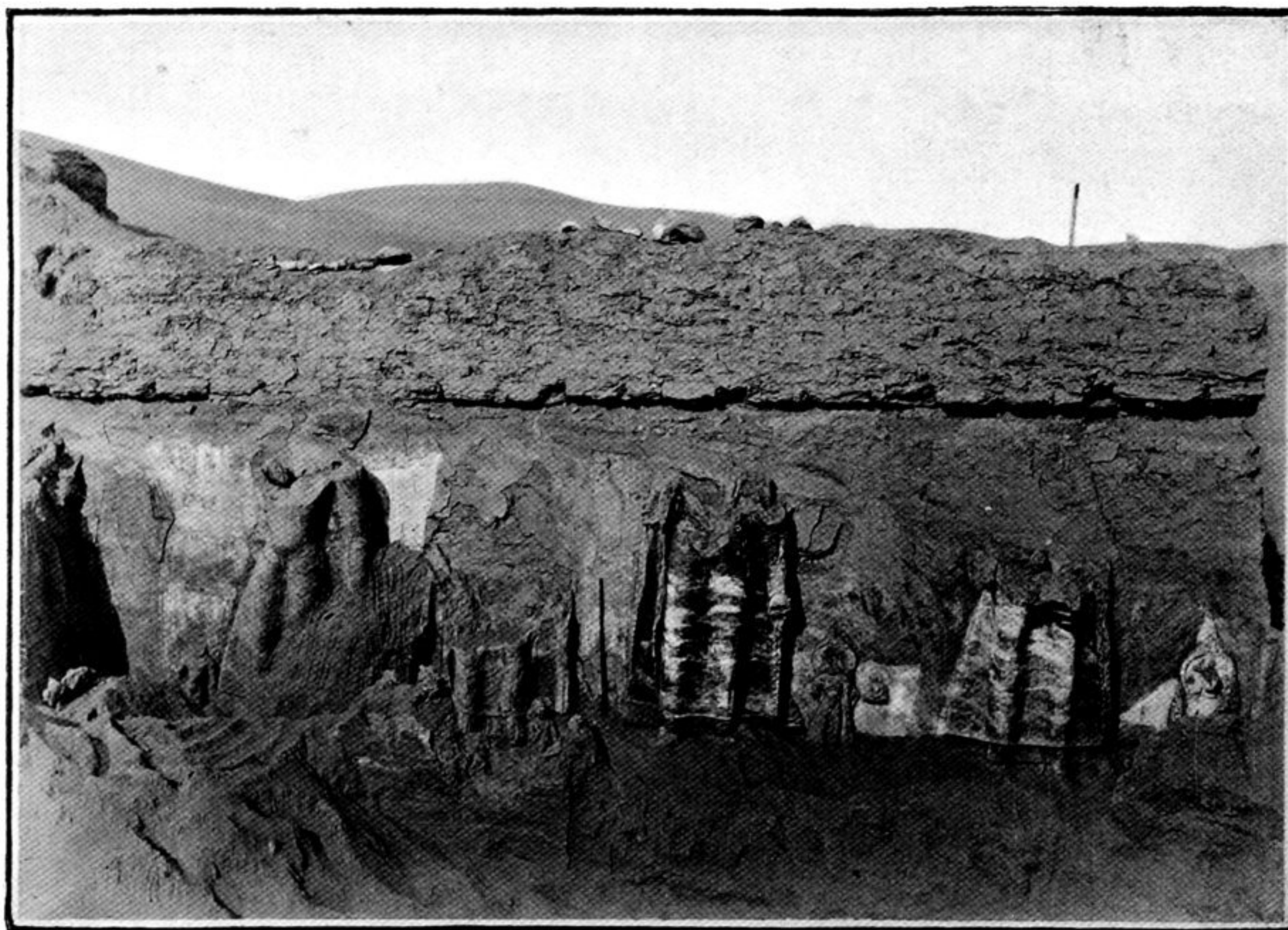
lxxvi

lxxv

lxxiv

lxxiii

lxxii



RELIEF SCULPTURES, R. lxxii-R. lxxvii, ON OUTER SOUTH-EAST WALL,
RAWAK STŪPA COURT.

(See Chap. XIV. sec. iv.)