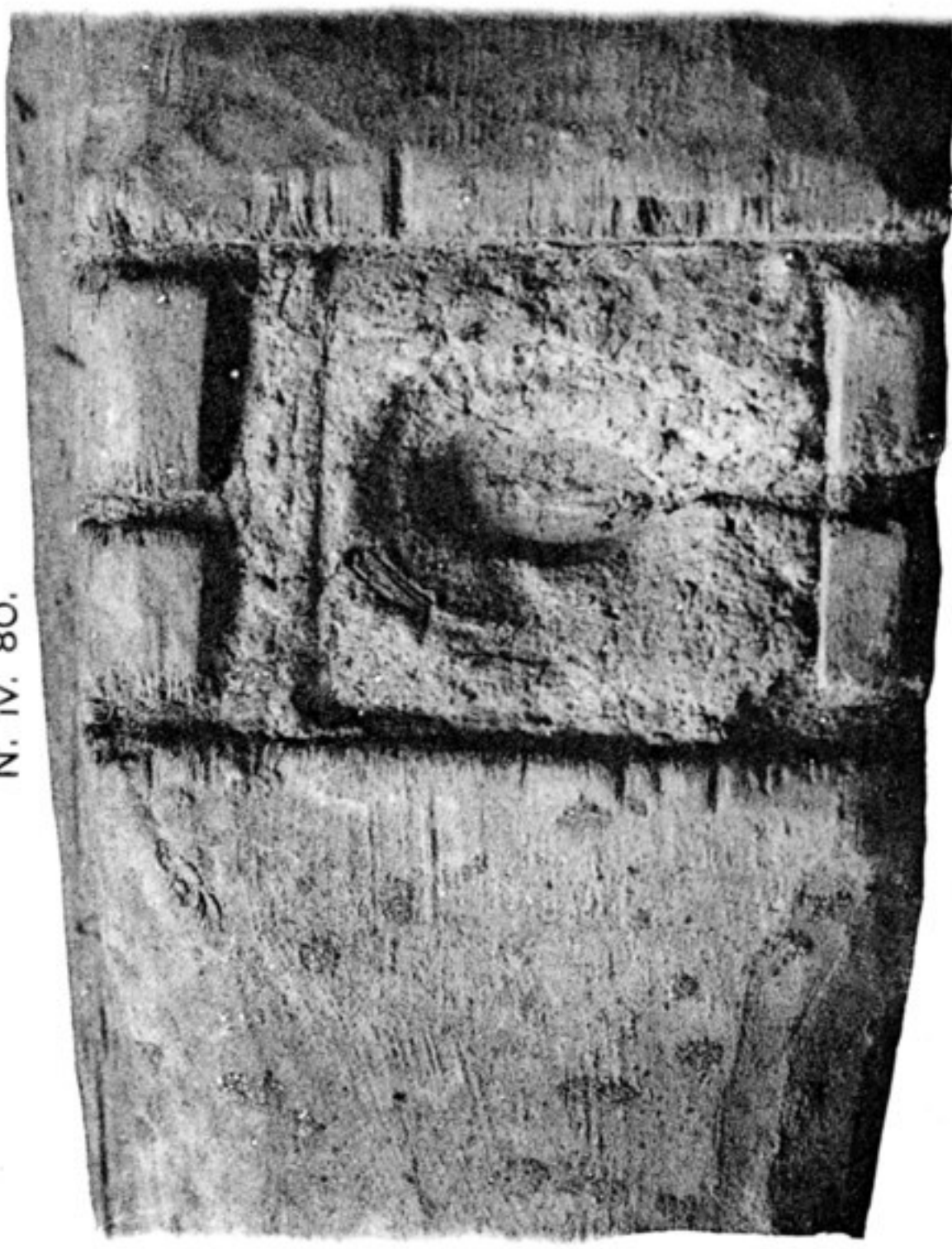


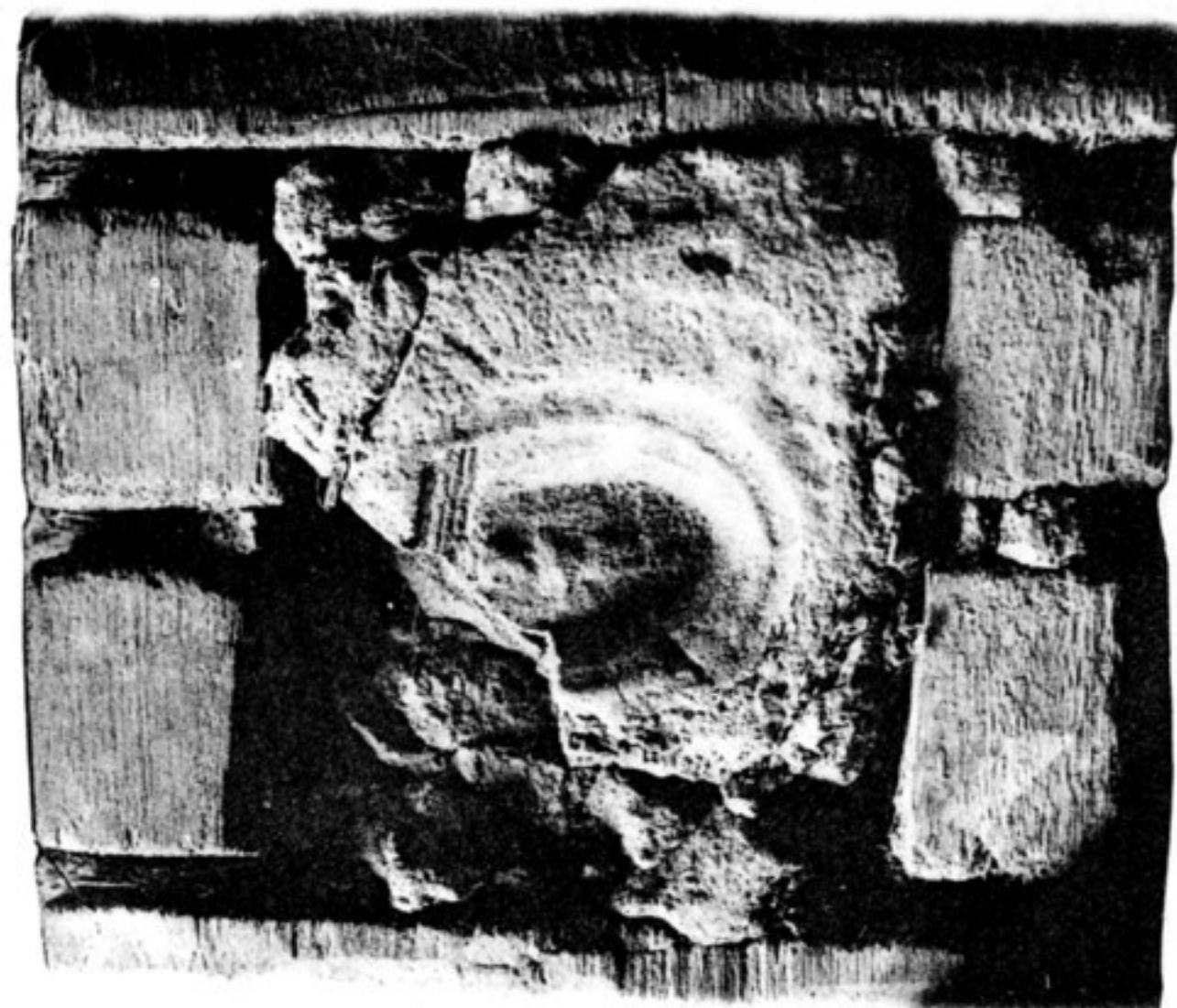
N. xv. 307.



N. iv. 80.



N. i. 9.



N. xv. 24.



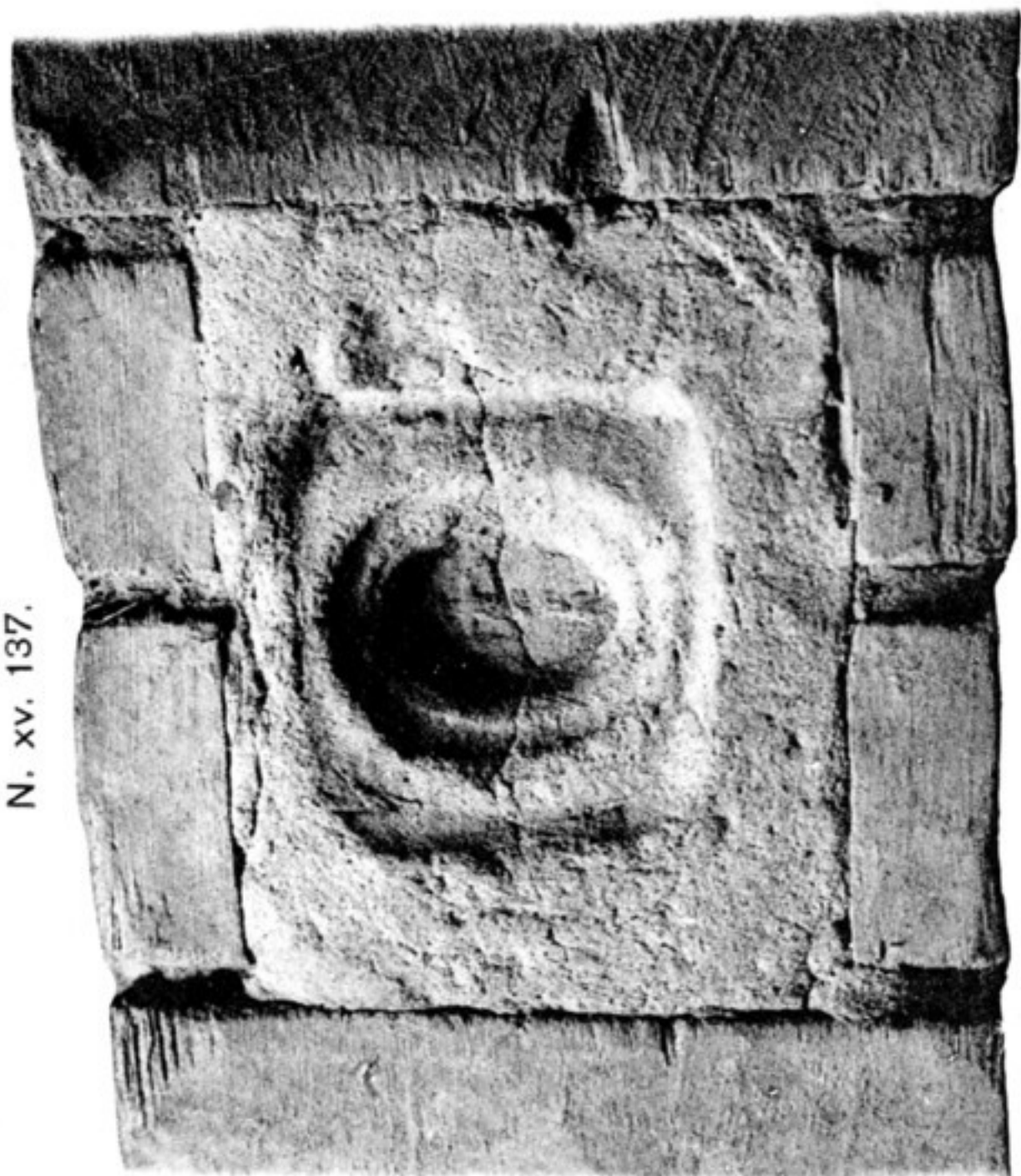
N. xv. 330. (1/1)



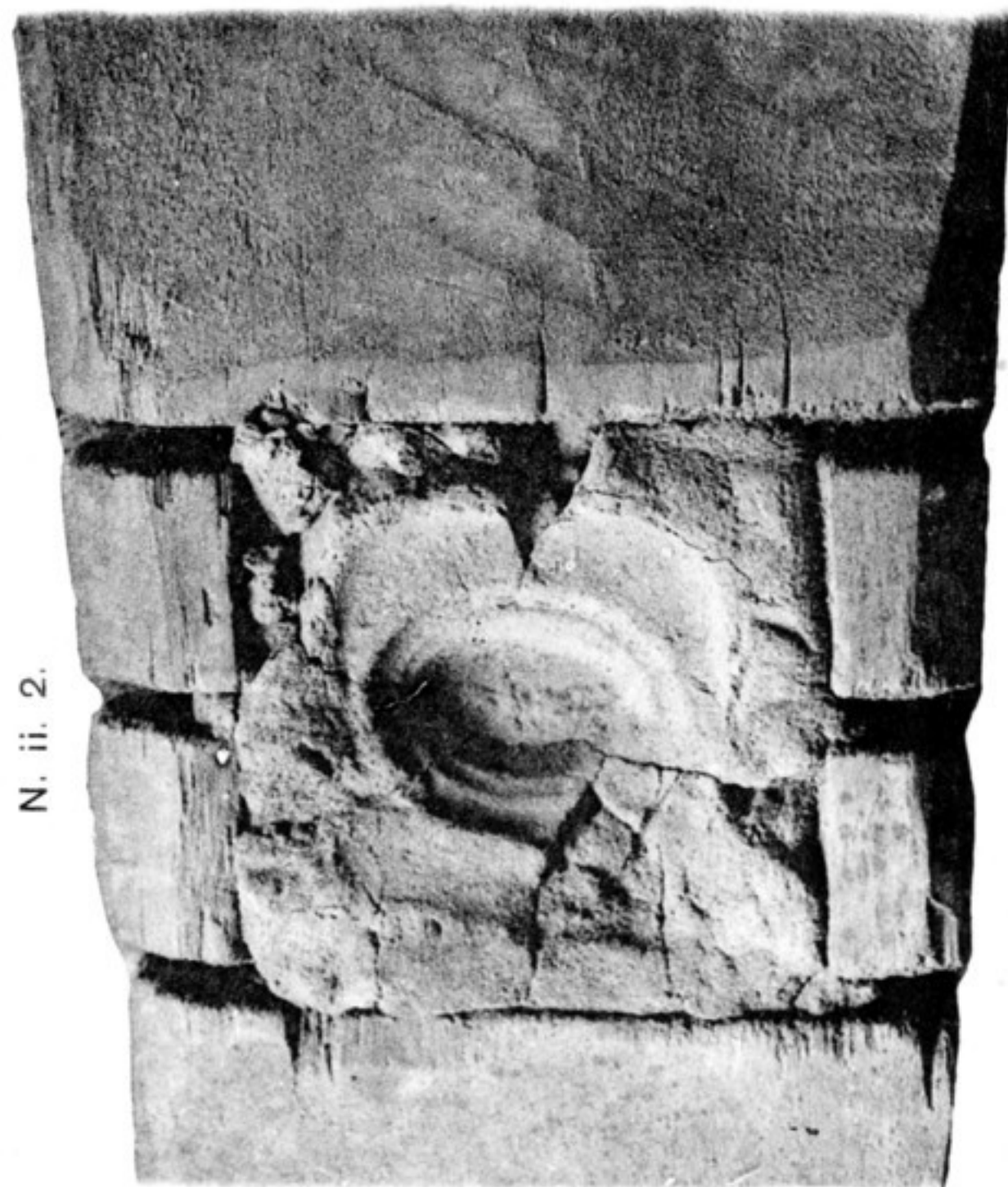
N. xv.  
330.



N. xv. 137.



N. ii. 2.



N. xv. 166.



CLAY SEALS OF KHAROŠTHĪ DOCUMENTS ON WOOD, NIYA SITE.

Mostly enlarged 40-60 per cent. (See Chap. XI, sec. iv, viii.)