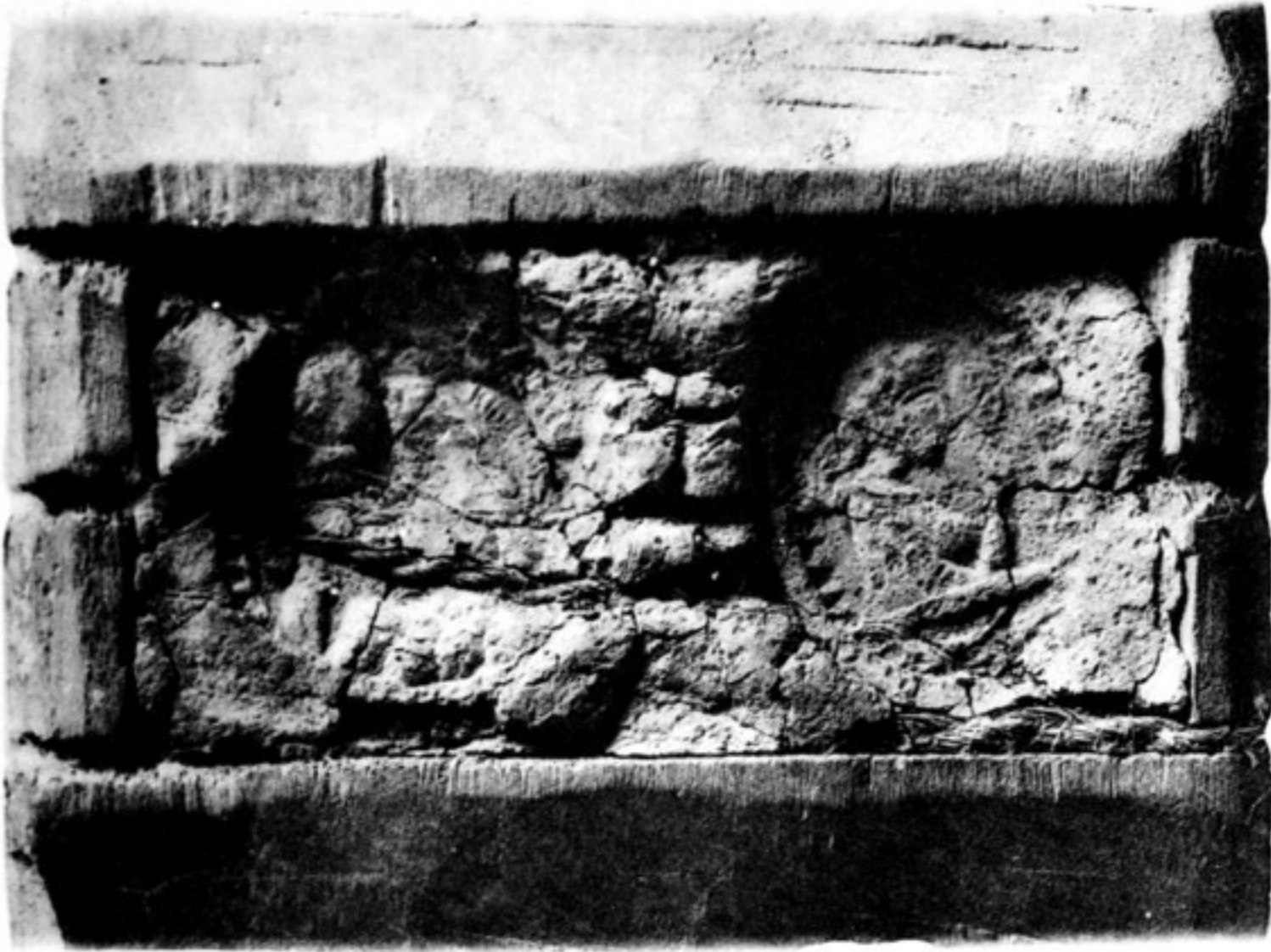


N. xv. 155 (enlarged).



N. xv. 163.



N. xv. 196.

N. xv. 38.



N. xv. 133. a.



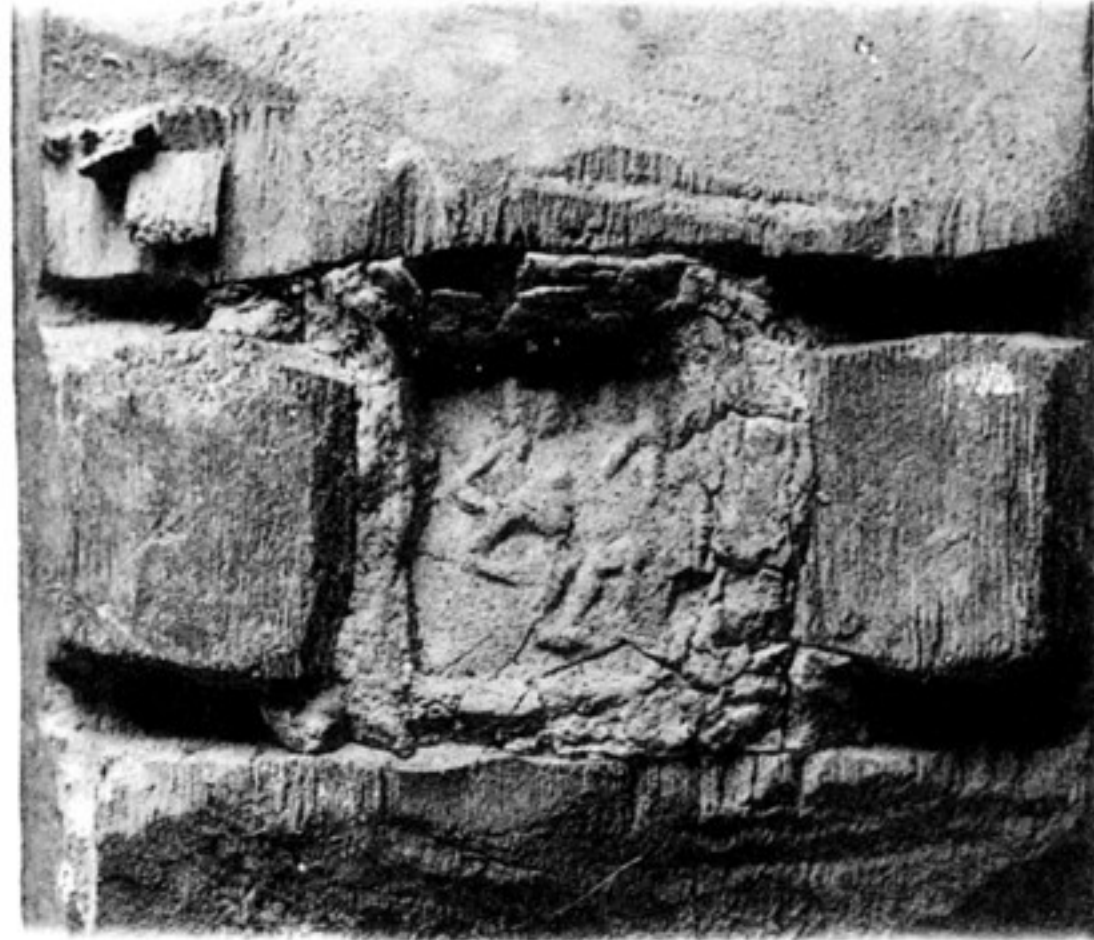
N. xv. 71.



N. xv. 334.



N. xv. 133. b.



N. xxiii. 1.



N. xv. 167 (enlarged).



CLAY SEALS OF KHAROṢṬHI DOCUMENTS ON WOOD, NIYA SITE.

(See Chap. XI. sec. iv, vii, viii.)

SCALE 1/1