

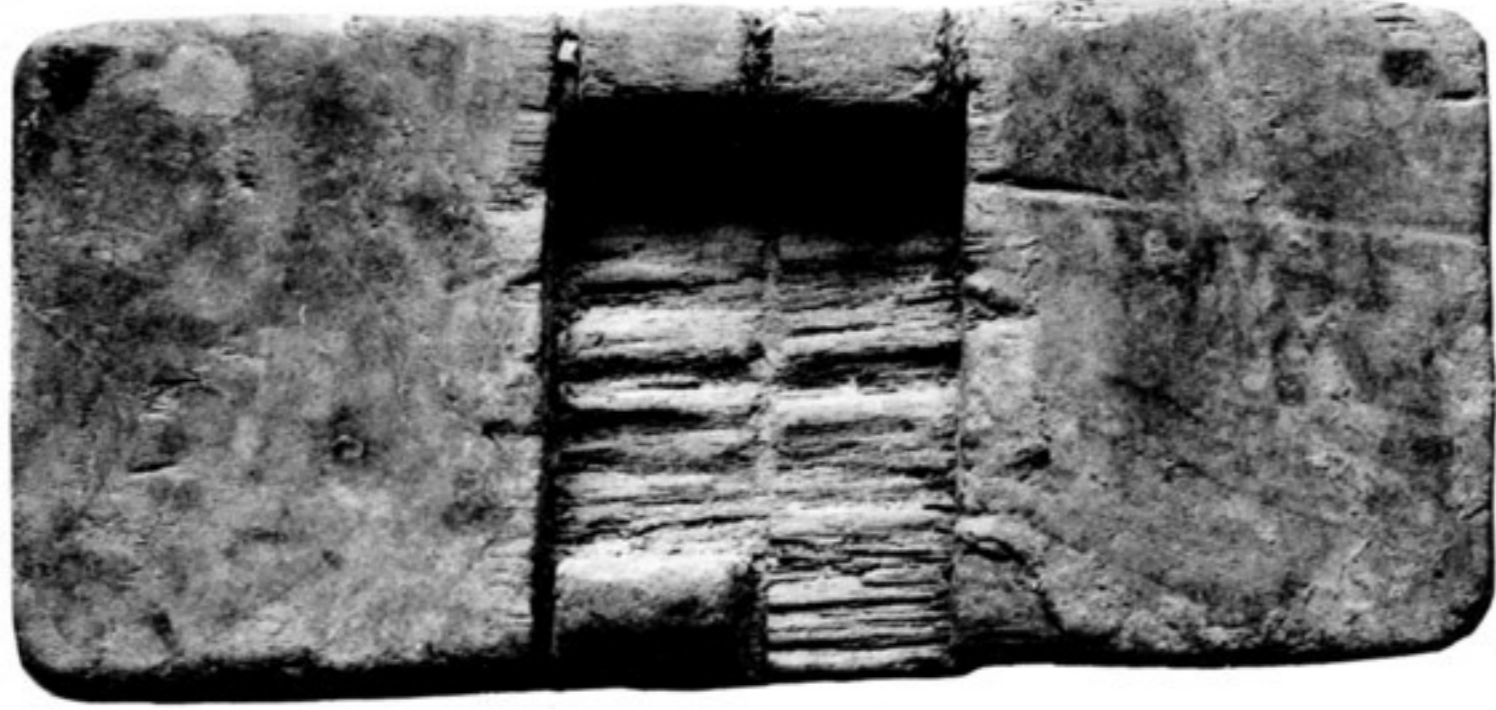
N. xv. 003. (1/1)
CLAY SEAL.



N. xv. 35. (1/1)
OBVERSE OF COVERING-TABLET.



N. xv. 345. (1/1)



N. iv. 28. (3/5)



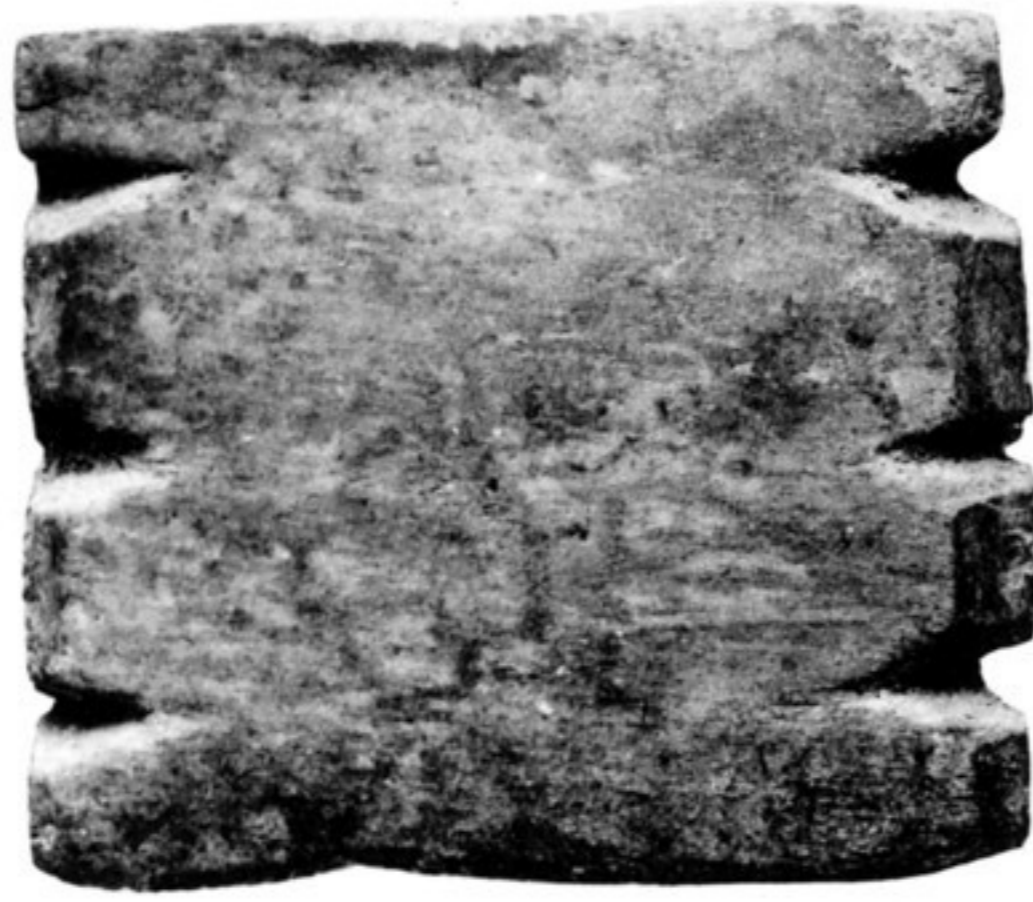
RECTANG. COVERING-TABLET
SPLIT AND PERISHED.

N. xv. 74. (1/1)



WOODEN
SEAL CASE.

N. xv. 60. (1/1)



WOODEN SEAL COVER (3).

N. x. 04.
(1/1).
WOODEN PEN.



E. 001. a. (1/1)



PIECE OF
CHINESE INK.

N. xv. 106. (9/10)



WOODEN PEN WITH BONE KNOB.

N. x. 05. (1/1)



WOODEN PEN.

N. x. 9. c. (1/1)

SLIP OF WOOD FOR WRITING.

