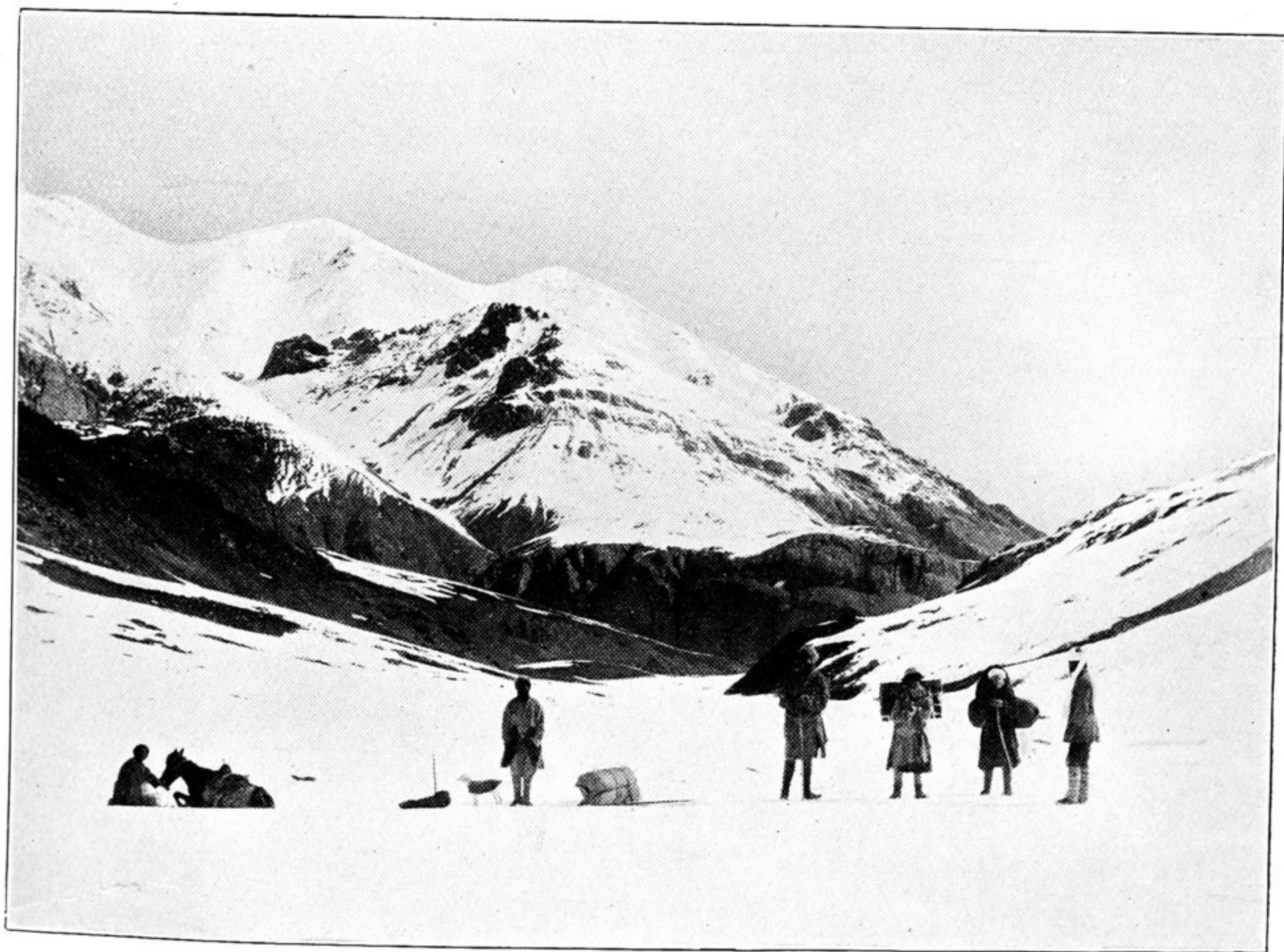




22. TOP OF DARKOT PASS, LOOKING TO NORTH-WEST ACROSS DARKOT GLACIER  
TOWARDS INDUS-OXUS WATERSHED.

Small specks of black on glacier below arrow indicate Surveyor's party.



23. ON THE BAROGHIL SADDLE, LOOKING TOWARDS OXUS VALLEY.

Wakhi carriers relieve a floundering pony of its load.